

US Terminology - Week 11/14



Hygge

CAL 2017



Week 11/14

Designed by :

HAAK MAAR RAAK

www.haakmaarraak.nl

Made possible by :

Scheepjes

INSPIRATION IN EVERY BALL OF YARN

Pattern copyright © Scheepjes.com. This pattern is available for unlimited personal use. You may print a copy of the pattern or keep a digital copy for personal use only. Do not reproduce this pattern or sell this pattern (either digitally or in print). This document may not be posted online, either as a complete document or in part. You are allowed to sell items that are made using this pattern as long as the designer is credited. Please do not print copies to distribute with yarn sales as this is an infringement of copyright.

1



Stitches

- × ch – chain
- × sc – single crochet
- × ss – slip stitch
- × st – stitch

Yarns See the color table for yarns used.

Tips and Tricks

- × If you find it hard to keep track of the rows (for example, which rows belong to the separator), take a contrast yarn and weave that horizontally through your rows on the top and bottom. When you finish, take your contrast yarn out.
- × This embroidery pattern is most easily created if you start at one side of the pattern and work your way through row by row.
- × The row numbers in purple indicate the row count when you count the rows continuously throughout the weeks.

Hook Size

- × 4.5 mm (US 7)
- × Optionally, 4.0 mm (US G/6) for the separator

Gauge 19 sc and 19 rows = 10 cm (4 in)

Pattern

Release stitch marker from previous week, ch1, turn.

Rows 1-23: 59 sc across, ch1, turn.

Row 24: 59 sc across. Place stitch marker in last st.

Embroidery

Work your embroidery on Rows 1-17 (**Rows 258-274**) in cross-stitch according to the embroidery scheme, with Row 1 being the bottom and Row 17 being the top of your embroidered motif. You will read the scheme as follows:

Every square represents a crocheted stitch in your shawl. The white squares will not be embroidered. The colored squares represent the cross-stitches you're going to make. In every square, there's a letter which corresponds to the color you will use for embroidery.

For details regarding how to embroider, read the Tips and Tricks document, or watch the video tutorial Esther made for Week 2

Pattern copyright@Scheepjes.com. This pattern is available for unlimited personal use. You may print a copy of the pattern or keep a digital copy for personal use only. Do not reproduce this pattern or sell this pattern (either digitally or in print). This document may not be posted online, either as a complete document or in part. You are allowed to sell items that are made using this pattern as long as the designer is credited. Please do not print copies to distribute with yarn sales, as this is an infringement of copyright.

Separator

The separator is crocheted in rows 18-24 (Rows 275-281). Take color **A** and use a 4.0 mm crochet hook, if you tend to chain loosely. If it pulls too much or if your shawl becomes concave at the ends, switch to a larger hook size for the separator.

Separator Row 1: Keep your yarn at the wrong side of your shawl. Insert your hook top-down in between the 3rd and 4th st from Row 22. Pull up a loop, insert your hook in between the 4th and 5th st from Row 21, pull up a loop, pull through loop on hook (ss made). Pull up a loop between the 5th and 6th st from Row 20, make ss. Pull up a loop between the 6th and 7th st from Row 19, make ss. Pull up a loop between the 7th and 8th st from Row 18, make ss. First diagonal line made.

Pull up a loop between the 8th and 9th st from Row 19, make ss. Pull up a loop between the 9th and 10th st from Row 20, make ss. Pull up a loop between the 10th and 11th st from Row 21, make ss. Pull up a loop between the 11th and 12th st from Row 22, make ss. Pull up a loop between the 12th and 13th st from Row 23, make ss.











Continue making diagonal ss lines. Every repeat consists of 10 slip stitches – 5 diagonally up and 5 down. End with making a ss over the 4th-to-last sc from Row 20 – meaning that your last diagonal line consists of 4 instead of 5 ss. Cut yarn.

Separator Row 2: Pull up a loop in between the 3rd and 4th st from Row 19, pull up a loop in between the 4th and 5th st from Row 20, make ss. Pull up a loop between the 5th and 6th st from Row 21, make ss (so over the ss from your other row!). Pull up a loop in between the 6th and 7th st from Row 22, make ss. Pull up a loop in between the 7th and 8th st from Row 23, make ss.

Pull up a loop between the 8th and 9th st from Row 22, make ss. Pull up a loop between the 9th and 10th st from Row 21, make ss. Pull up a loop between the 10th and 11th st from Row 20, make ss (so over the ss from your other row!). Pull up a loop between the 11th and 12th st from Row 19, make ss. Pull up a loop between the 12th and 13th st from Row 18, make ss.

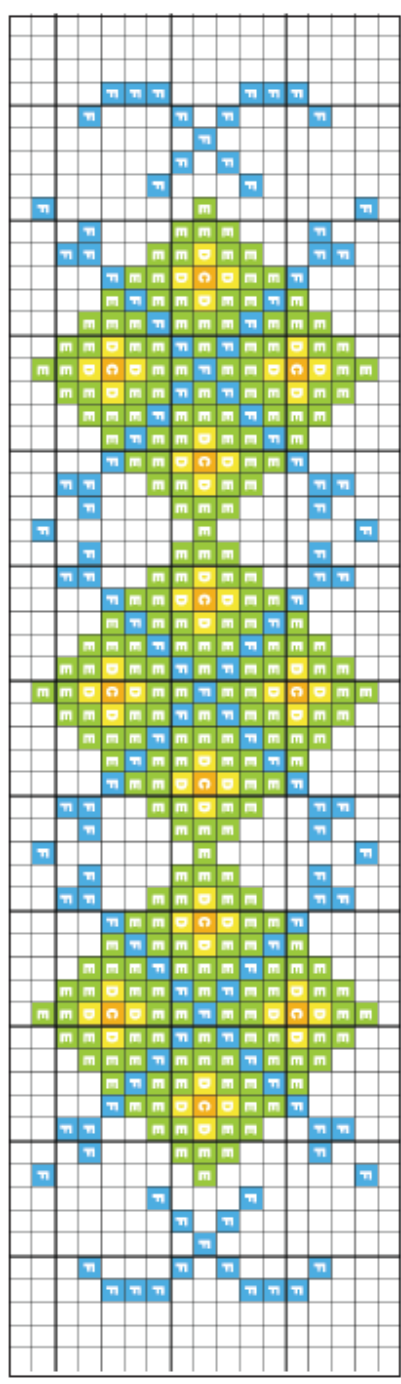
Continue making diagonal ss lines. Every repeat consists of 10 slip stitches – 5 diagonally up and 5 down. End with making a ss over the 4th-to-last sc from Row 22 – meaning that your last diagonal line consists of 4 instead of 5 ss. Cut yarn.

Colour table

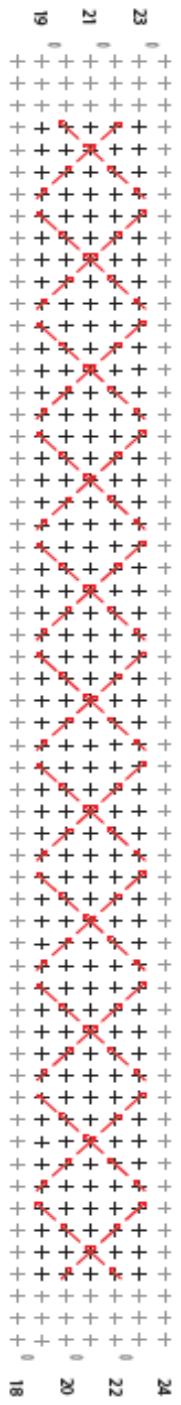
Yarns	Stone washed	Catona (25 gr)									
Abbreviation	SW	A	B	C	D	E	F	G	H	I	J
Pastel	801	264	414	403	402	212	406	172	179	409	408
Jewel	802	258	130	411	401	412	391	128	400	396	394
Rainbow	803	115	281	208	280	205	146	201	282	114	222
Danish Mermaid	805	130	392	512	205	513	389	241	253	397	509
Diagram colour											

Pattern copyright@Scheepjes.com. This pattern is available for unlimited personal use. You may print a copy of the pattern or keep a digital copy for personal use only. Do not reproduce this pattern or sell this pattern (either digitally or in print). This document may not be posted online, either as a complete document or in part. You are allowed to sell items that are made using this pattern as long as the designer is credited. Please do not print copies to distribute with yarn sales, as this is an infringement of copyright.

Embroidery diagram



Separator diagram



Pattern copyright@Scheepjes.com. This pattern is available for unlimited personal use. You may print a copy of the pattern or keep a digital copy for personal use only. Do not reproduce this pattern or sell this pattern (either digitally or in print). This document may not be posted online, either as a complete document or in part. You are allowed to sell items that are made using this pattern as long as the designer is credited. Please do not print copies to distribute with yarn sales, as this is an infringement of copyright.