



Hygge

CAL 2017



Week 10/14

Designed by :

HAAK MAAR RAAK

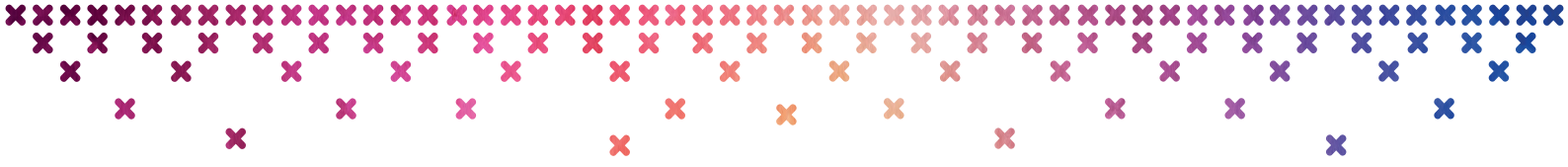
www.haakmaarraak.nl

Made possible by :

Scheepjes
INSPIRATION IN EVERY BALL OF YARN

Pattern copyright © Scheepjes.com. This pattern is available for unlimited personal use. You may print a copy of the pattern or keep a digital copy for personal use only. Do not reproduce this pattern or sell this pattern (either digitally or in print). This document may not be posted online, either as a complete document or in part. You are allowed to sell items that are made using this pattern as long as the designer is credited. Please do not print copies to distribute with yarn sales as this is an infringement of copyright.





Stitches (UK)

- ✕ **ch** chain
- ✕ **dc** double crochet
- ✕ **ss** slip stitch
- ✕ **st** stitch

Yarns

See the colour table for used yarns.

Tips and tricks

- ✕ If you find it hard to keep track of the rows (for example, which rows belong to the separator) take a contrast yarn and weave that horizontally through your rows on the top and bottom. When you finish, take your contrast yarn out.
- ✕ This embroidery pattern is most easily created if you start at one side of the pattern and finish each motif as you go.
- ✕ The row numbers in purple indicate the row count when you count the rows continuously throughout the weeks.

Hooksize: 4.5mm (US Size 7) (optionally 4.0mm (US size G/6)).

Gauge: 19 dc and 19 rows = 10cm (4in).

Pattern

Release stitchmarker from previous week. ch1, turn.

Rows 1-23 59dc across, ch1, turn.

Row 24 59dc across, Place stitchmarker in last stitch.

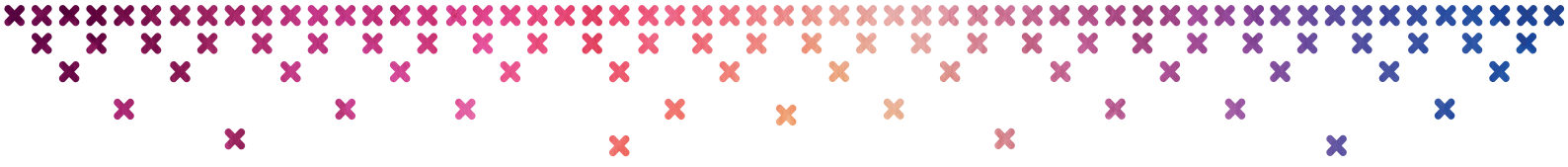
Embroidery

Work your embroidery on rows 1-17 (rows 234-250) in cross stitch according to the embroidery scheme, with row 1 being the bottom, and row 17 being the top of your embroidered motif. You read the scheme as follows:

Every square represents a crocheted stitch in your shawl. The white squares will not be embroidered. The coloured squares represent the cross stitches you're going to make. In every square there's a letter, corresponding to the colour you use for the embroidery.

For details regarding how you embroider read the Tips & Tricks document, or watch the video tutorial Esther made for week 2.





Separator

The separator is crocheted in rows 18-24 (rows 251-257). Take colour **A** and use a 4.0 mm crochet hook, if you tend to chain loosely. If it pulls too much or if your shawl becomes concave at the ends, switch to a larger hooksize for the separator.

Separator row 1 Keep your yarn at the wrong side of your shawl. Stick your hook top-down in between the 3rd and 4th st from row 22. Pull up a loop, stick your hook in between the 4th and 5th st from row 21, pull up a loop, pull through loop on hook (ss made). Pull up loop between the 5th and 6th st from row 20, make ss, pull up loop between the 6th and 7th st from row 19, make ss. Pull up loop between the 7th and 8th st from row 18, make ss. First diagonal line made.

Pull up loop between the 8th and 9th st from row 19, make ss. Pull up loop between the 9th and 10th st from row 20, make ss. pull up loop between 10th and 11th st from row 21, make ss. Pull up loop between 11th and 12th st from row 22, make ss, pull up loop between the 12th and 13th st from row 23, make ss.

Continue making diagonal ss lines. Every repeat consists of 10 slip stitches, 5 diagonally up and 5 down. End with making a ss over the 4th-to-last dc from row 20, meaning that your last diagonal line consists of 4 instead of 5 ss. Cut yarn.

Separator row 2 Pull up a loop in between the 3rd and 4th st from row 19, pull up a loop in between the 4th and 5th st from row 20, make ss, pull up a loop in between the 5th and 6th st from row 21, make ss (so over the ss from your other row!), pull up a loop in between the 6th and 7th st from row 22, make ss, pull up a loop in between the 7th and 8th st from row 23, make ss.

Pull up loop between the 8th and 9th st from row 22, make ss. Pull up loop between the 9th and 10th st from row 21, make ss. pull up loop between 10th and 11th st from row 20, make ss (so over the ss from your other row!). Pull up loop between 11th and 12th st from row 19, make ss, pull up loop between the 12th and 13th st from row 18, make ss.

Continue making diagonal ss lines. Every repeat consists of 10 slip stitches, 5 diagonally up and 5 down. End with making a ss over the 4th-to-last dc from row 22, meaning that your last diagonal line consists of 4 instead of 5 ss. Cut yarn.

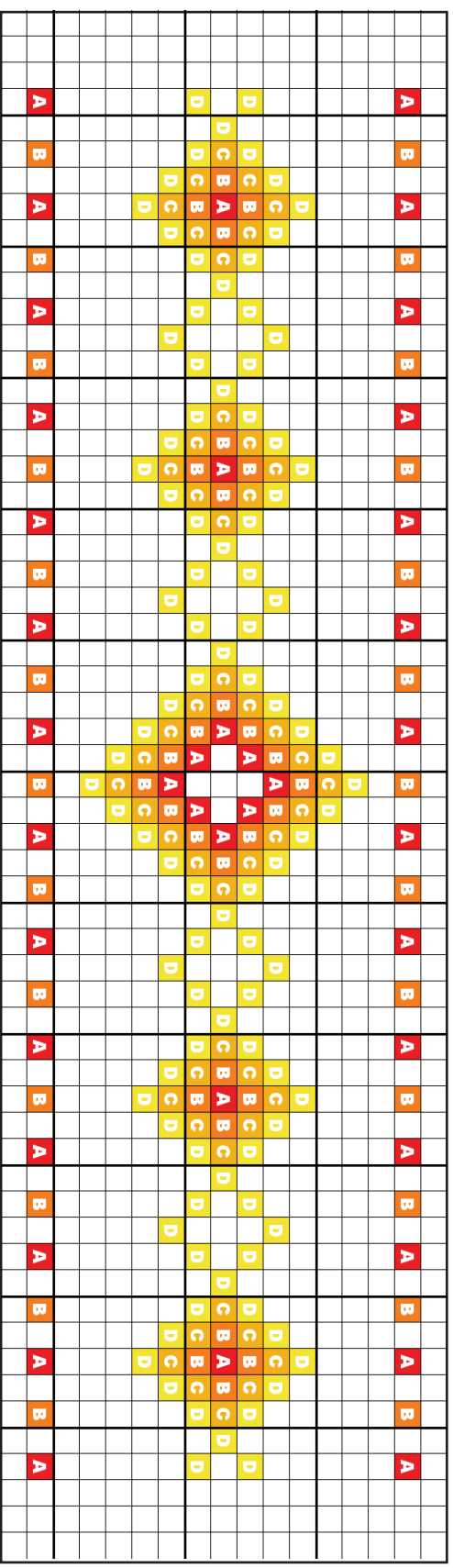
Colour table

Yarns	Stone washed	Catona (25 gr)									
Abbreviation	SW	A	B	C	D	E	F	G	H	I	J
Pastel	801	264	414	403	402	212	406	172	179	409	408
Jewel	802	258	130	411	401	412	391	128	400	396	394
Rainbow	803	115	281	208	280	205	146	201	282	114	222
Danish Mermaid	805	130	392	512	205	513	389	241	253	397	509
Diagram colour		■	■	■	■	■	■	■	■	■	■

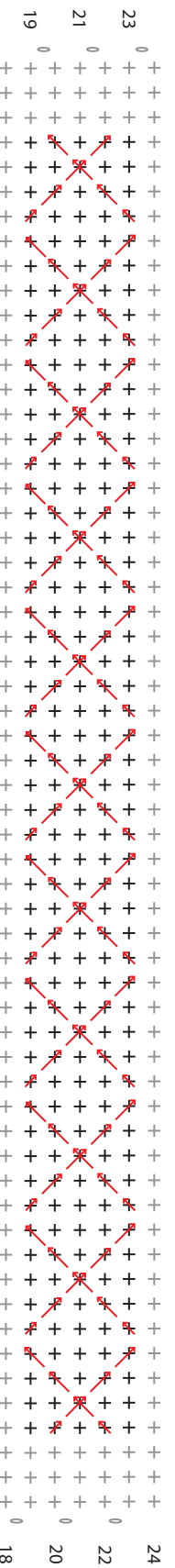
Pattern copyright © Scheepjes.com. This pattern is available for unlimited personal use. You may print a copy of the pattern or keep a digital copy for personal use only. Do not reproduce this pattern or sell this pattern (either digitally or in print). This document may not be posted online, either as a complete document or in part. You are allowed to sell items that are made using this pattern as long as the designer is credited. Please do not print copies to distribute with yarn sales as this is an infringement of copyright.



Embroidery diagram



Separator diagram



Pattern copyright © Scheepjes.com. This pattern is available for unlimited personal use. You may print a copy of the pattern or keep a digital copy for personal use only. Do not reproduce this pattern or sell this pattern (either digitally or in print). This document may not be posted online, either as a complete document or in part. You are allowed to sell items that are made using this pattern as long as the designer is credited. Please do not print copies to distribute with yarn sales as this is an infringement of copyright.