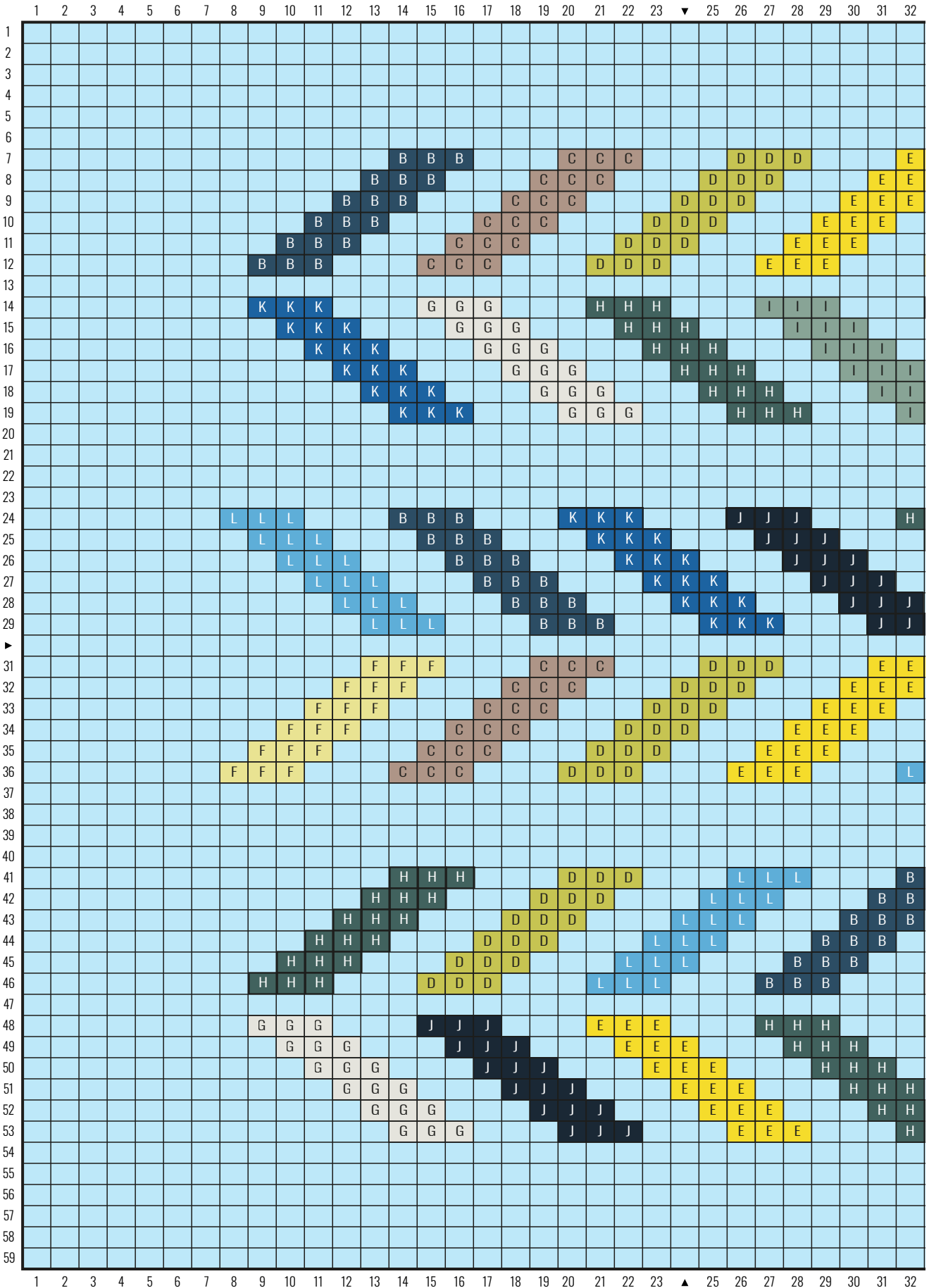
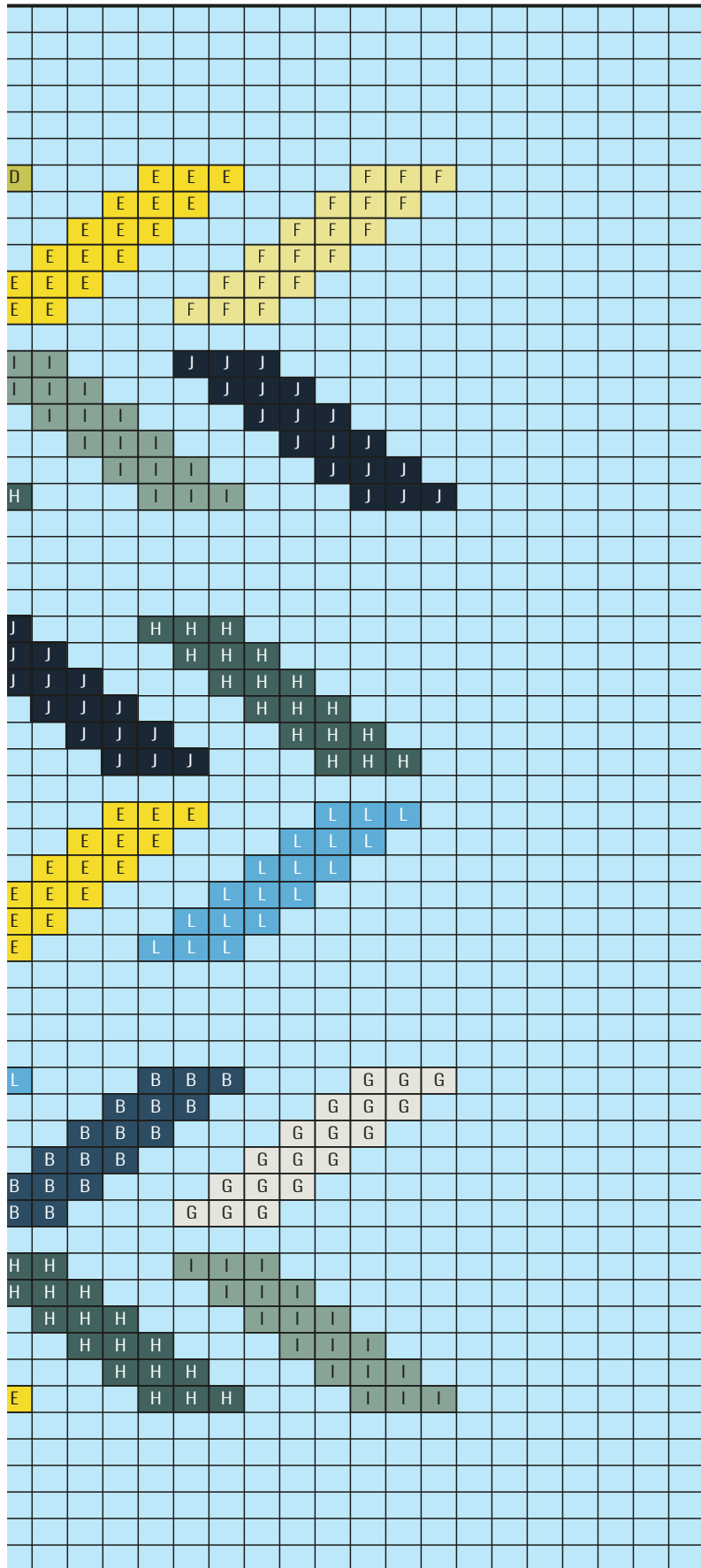


Chart: Embroidered Arrow Motif



28 29 30 31 32 33 34 35 36 37 38 39 40 41 42 43 44 45 46 47



28 29 30 31 32 33 34 35 36 37 38 39 40 41 42 43 44 45 46 47

1
2
3
4
5
6
7
8
9
10
11
12
13
14
15
16
17
18
19
20
21
22
23
24
25
26
27
28
29
30
31
32
33
34
35
36
37
38
39
40
41
42
43
44
45
46
47
48
49
50
51
52
53
54
55
56
57
58
59

Key

Note: each cross stitch is worked over 2 stitches and 2 rows

- Background** Scheepjes Scrumptious 343 French Blue Macaron
- Yarn B** Scheepjes Cahlista 164 Light Navy
- Yarn C** Scheepjes Cahlista 406 Soft Beige
- Yarn D** Scheepjes Cahlista 512 Lime
- Yarn E** Scheepjes Cahlista 280 Lemon
- Yarn F** Scheepjes Cahlista 100 Lemon Chiffon
- Yarn G** Scheepjes Cahlista 106 Snow White
- Yarn H** Scheepjes Cahlista 244 Spruce
- Yarn I** Scheepjes Cahlista 528 Silver Blue
- Yarn J** Scheepjes Cahlista 124 Ultramarine
- Yarn K** Scheepjes Cahlista 201 Electric Blue
- Yarn L** Scheepjes Cahlista 511 Cornflower

