



PRETTY LITTLE THINGS



Space



KNIT, EMBROIDER AND CROCHET

Explore the final frontier



*Designed to look knitted
in the round, this pattern
is easier than it seems!*

SPACE

When the sky is clear, I love looking up at the vast starry night above me with a sense of wonder, hoping to spot a shooting star or two. Fortunately, the galaxy isn't as far away from our fingertips as it may seem, as craft allows us to create anything under the sun, and is able to take us on all kinds of creative adventures! We can study the constellations through embroidery, imagine orbiting the stars while gazing at an amigurumi solar system, or launch into the depths of our creative souls while knitting an adorable astronaut. So, let's reach for the stars and make something magnificent!

Scheepjes Creative Director

Sunny
♥

ASTRONAUT KNITTED TOY



By Cher Marcus

Gauge/Tension

Tension is not critical for this project, but different measurements may result in different yarn amounts needed

Measurements

Approx. 20cm tall

Abbreviations

[] number of sts on a given row

beg beginning

cont continue

k knit

k2tog knit 2 sts together to decrease by 1 st: insert needle kwise into first two sts and knit them together

k3tog knit 3 sts together to decrease by 2 sts: insert needle kwise into first three sts and knit them together

kfb knit front and back to increase by 1 st: insert needle into next st; knit as normal but don't slip st from needle, instead bring needle around to back and knit through back loop of same st

kwise knitwise

p purl

rem remaining

rep repeat

RS right side

st(s) stitch(es)

st st stocking stitch: RS knit; WS purl

WS wrong side

(.....) x times work instructions between brackets the total number of times stated



PRETTY LITTLE THINGS



SHOPPING LIST

Visit your local Scheepjes retailer to purchase all materials listed below, quoting the item numbers where required.

ASTRONAUT KNITTED TOY

Scheepjes Colour Crafter

(100% Premium Acrylic
(Anti Pilling); 100g/300m)

Yarn A: 1099 Wolvega x 1 ball

Yarn B: 1001 Weert x 1 ball

Yarn C: 2005 Oostende x 1 ball

Yarn D: 2002 Gent x 1 ball

Yarn E: 1019 Texel x 1 ball

3mm knitting needles

1 x stitch holder

Polyester stuffing
(item no. 240130-10)

PRETTY LITTLE THINGS



NOTES

Use this space to write your pattern notes!



EARN YOUR STRIPES!

Our Colour Crafter yarn collection comes in an **enormous range** of 93 colours, making it easy to give this project a personal touch. **Customise** the astronaut's stripes, or give this intergalactic explorer a completely new look!

Made a Pretty Little Thing from one of our issues? We'd love to see it! Share on social media using

#ScheepjesPrettyLittleThings

Pattern Notes

Astronaut is worked bottom up and flat. St st is used throughout. Work first Leg separately, then put aside, and work second Leg. Cont to work Body and Head, joining first Leg to first row of Body as you go. Break yarn after each colour change.

Arms and Helmet are worked separately. Use photo as guide for placement of embroidered details. For embroidery st instructions, visit bit.ly/simys-embroidery-tutorial.

Instructions

LEG (MAKE 2)

With Yarn A, cast on 20 sts.

Row 1 (WS) Purl. [20 sts]

Row 2 (RS) Kfb in each st. [40 sts]

Beg with a p row, work 5 rows in st st.

Next row (RS) K10, (k2tog) 10 times, k10. [30 sts]

Beg with a p row, work 3 rows in st st.

Change to Yarn B.

Beg with a k row, work 4 rows in st st.

Change to Yarn C.

Beg with a k row, work 2 rows in st st.

Change to Yarn D.

Beg with a k row, work 2 rows in st st.

Change to Yarn B.

Beg with a k row, work 10 rows in st st.

Place sts for first Leg on st holder and break yarn.

Work second Leg, do not break yarn and cont to Body.

BODY

Cont with Yarn B.

Next row (RS) K30 across second Leg already on needle, then take first Leg off st holder, place on left needle with RS facing and k30. [60 sts]

Beg with a p row, work 17 rows in st st.

Next row (RS) (K2, k2tog) 15 times. [45 sts]

Next row (WS) Purl.

Next row (K2tog) 22 times, k1. [23 sts]

Next row Purl.

Do not break yarn and cont to Head.

HEAD

Change to Yarn E.

Beg with a k row, work 2 rows in st st.

Next row (RS) Kfb in each st. [46 sts]

Next row (WS) Purl.

Next row (K2, kfb) 15 times. [61 sts]

Beg with a p row, work 15 rows in st st.

Next row (RS) (K4, k2tog) 9 times, k4, k3tog. [50 sts]

Next row (WS) Purl.

Next row (K2tog) 25 times. [25 sts]

Next row Purl.

Next row (K2tog) 11 times, k3tog. [12 sts]

Break yarn and pull thread through rem sts, tighten and fasten off.

ARM (MAKE 2)

With Yarn A, cast on 10 sts.

Row 1 (WS) Purl. [10 sts]

Row 2 (RS) Kfb in each st. [20 sts]

Beg with a p row, work 5 rows in st st.

Change to Yarn B.





Beg with a k row, work 2 rows in st st.
Change to Yarn C.

Beg with a k row, work 2 rows in st st.
Change to Yarn D.

Beg with a k row, work 2 rows in st st.
Change to Yarn B.

Beg with a k row, work 10 rows in st st.

Next row (RS) Cast off 3 sts, k to end. [17 sts]

Next row (WS) Cast off 3 sts, p to end. [14 sts]

Next row K2tog, k to last 2 sts, k2tog. [12 sts]

Next row Purl.

Rep last 2 rows 3 more times. [6 sts]

Cast off rem sts.

HELMET

With Yarn B, cast on 40 sts.

Row 1 (RS) Knit. [40 sts]

Row 2 (WS) Knit.

Rep Rows 1-2.

Change to Yarn C.

Beg with a k row, work 2 rows in st st.

Change to Yarn D.

Beg with a k row, work 2 rows in st st.

Change to Yarn B.

Next row (RS) (K1, kfb) 20 times. [60 sts]

Beg with a p row, work 5 rows in st st.

Next row (RS) (K4, k2tog) 10 times. [50 sts]

Beg with a p row, work 5 rows in st st.

Next row (RS) (K3, k2tog) 10 times. [40 sts]

Beg with a p row, work 5 rows in st st.

Next row (RS) (K2, k2tog) 10 times. [30 sts]

Beg with a p row, work 5 rows in st st for 5 rows.

Next row (RS) (K1, k2tog) 10 times. [20 sts]

Beg with a p row, work 3 rows in st st.

Next row (RS) (K2tog) 10 times. [10 sts]
Break yarn and pull thread through rem sts,
tighten and fasten off.

ASSEMBLY

Using Yarn B, join inner Leg seams, Body seam and Head seam using mattress st (refer to guide on right), leaving small gap at back for stuffing.

Note: we used Yarn D in guide so sts are visible.
Oversew seam at bottom of Legs (beneath feet).
Stuff, then close seam at back.

Gather in neck by tying a length of Yarn E around first knitted row of Yarn E (blue) section of Head. Join row ends of Arms to underarm cast-off sts. Stuff, then st onto Body, positioning top of Arm 4 sts below beg of Head section. Place Helmet around Head and join row ends of Yarn B (white) border and stripes under chin. St Helmet to back of neck to secure.

EMBROIDERED DETAILS

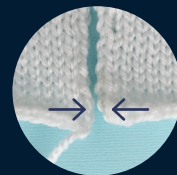
Using photo as guide, embroider details as follows: with Yarn C, embroider rectangles onto chest with long straight horizontal sts, with Yarn D, embroider three French knots next to rectangles, and with Yarn B, embroider three lines on Head.

TO FINISH

Weave in all ends.

HOW TO WORK SEAMS USING MATTRESS STITCH

Neatly join knitted pieces of fabric with this handy technique that works for all edges!



Step 1 Place the knitted pieces beside each other with fronts facing up, then line up the corresponding stitches.



Step 2 Stitch from back to front through the first stitch, then stitch under two bars of the adjoining stitch.



Step 3 Stitch under two bars of the next adjoining stitch on the other side, and continue until the pieces are joined.

Wish upon a star

Master three staple
embroidery stitches



I NEED SOME SPACE HANGING



By Megan Keegan

Measurements

17 x 18cm, including hoop

Abbreviations

∅ diameter

st(s) stitch(es)

Pattern Notes

Embroidery is worked using cross sts, French knots and running sts; see Schematic 1: Embroidery Chart for st placement. Separate thread and use two strands to work cross sts and French knots, and one strand for running sts. For embroidery st instructions, visit Simy's Studio blog: bit.ly/simys-embroidery-tutorial.

To make design visible for stitching onto black fabric, water-soluble Solufix is adhered to front of fabric before tracing design. When transferring design to Solufix, make sure it is centred and fabric grain is straight (not on the bias).

Instructions

PREPARE FABRIC

Step 1 Tape design to window or lightbox, position Solufix on top and tape to window or lightbox.

Trace design onto Solufix with sharp pencil, then stick it centred onto fabric.

Step 2 With traced design facing, clamp fabric into embroidery hoop and screw tight to secure.

EMBROIDERY

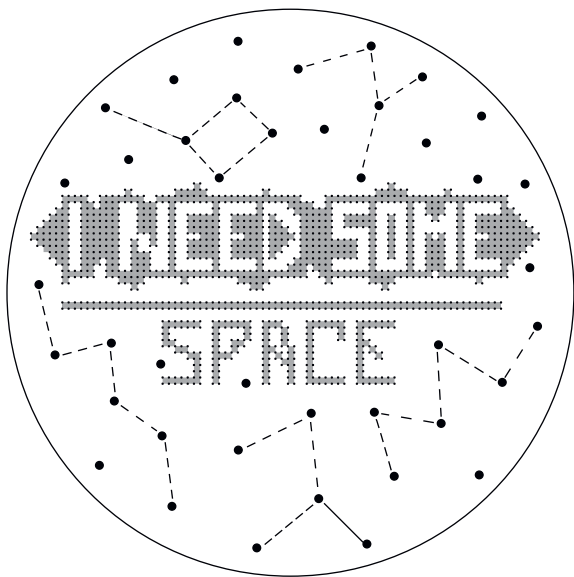
See Schematic 1: Embroidery Chart.

Step 3 Work cross sts for quote.

Step 4 Iron fabric carefully from back if needed: place a towel on ironing surface before placing embroidery on top to ensure sts aren't flattened. Clamp fabric back into hoop and work constellations and stars using running sts and French knots.

Schematic 1: Embroidery Chart

Photocopy schematic at 200%.



Key

- Running sts
- French knot
- ⌘ Cross st

Step 5 Remove fabric from hoop, rinse under water to dissolve Solufix and let dry.



TO FINISH

With back of work facing, knot ends together and weave them under sts to secure, then trim excess fabric to 1-2cm and tuck in slightly under inner hoop. Then, place felt piece over the top.

With 3 strands of thread, blanket st around edge to secure felt to fabric, and neatly cover back.

PRETTY LITTLE THINGS



SHOPPING LIST

Visit your local Scheepjes retailer to purchase all materials listed below, quoting the item numbers where required.

I NEED SOME SPACE HANGING

DMC Stranded Cotton embroidery thread

0310 (white) x 1 skein
(item no. 117MC-0310)

ø 15.5cm embroidery hoop
(item no. MK0025)

25 x 25cm black fabric
(item no. 96244-36)

16cm piece white felt
(item no. 10100-001)

Vlieseline Solufix self-adhesive
water-soluble backing
(item no. 23808)

Embroidery needle

ADD SOME SPARKLE

DMC's Stranded Cotton threads feature a **subtle shine**, but their Light Effects collection takes this one step further! Available in 36 shimmering shades, this **metallic** embroidery thread will add extra twinkle to your stitches.



WWW.SCHEEPJES.COM | 7



*The perfect amigurumi
project for
absolute beginners!*



Galactic dreams

SOLAR SYSTEM AMIGURUMI MOBILE



By Sarah-Jane Hicks

Gauge/Tension

Tension is not critical for this project but should be tight enough not to leave holes showing stuffing; different measurements may result in different yarn and stuffing amounts needed

Measurements

Sun ø 8.5cm, approx. drop from mobile 30cm
Saturn ø 6.5cm excluding ring, ø 8.5cm including ring, approx. drop from mobile 32cm
Earth ø 7.5cm, approx. drop from mobile 24cm
Mars ø 6cm, approx. drop from mobile 26cm
Pluto ø 5cm, approx. drop from mobile 19cm

Abbreviations (UK terms)

ø diameter

[] number of sts on a given round

blo back loop(s) only: insert hook under back loop(s) only

ch(s) chain(s) or chain st(s)

dc double crochet

dc2tog double crochet 2 together to decrease by 1 st: (insert hook in next st, yoh, pull up loop) twice, yoh, draw through all loops

rep repeat

RS right side

ss slip stitch(es)

st(s) stitch(es)

yoh yarn over hook

(.....) x times work instructions between brackets the total number of times stated

***.....; rep from * x times/to end** work instructions after * and then repeat that section as stated

Pattern Notes

This pattern is worked using amigurumi method: work sts continuously in a spiral without closing each round with ss. Mark first st of each round with stitch marker, moving it up as you go.

Cheeks and Continents are worked separately then stitched on where indicated. Once Sun and Planets are assembled, embellishments are embroidered directly onto them. For embroidery st instructions, visit Simy's Studio blog: bit.ly/simys-embroidery-tutorial.

Lengths of chs with silicone beads are used to hang Sun and Planets from mobile.

Instructions

SUN

With Yarn E, ch2.

Round 1 (RS) 6dc in second ch from hook (skipped 1 ch does not count as st). [6 dc]

Round 2 (RS) 2dc in each st around. [12 dc]

Round 3 (1dc, 2dc in next st) 6 times. [18 dc]

Round 4 (2dc, 2dc in next st) 6 times. [24 dc]

Round 5 (3dc, 2dc in next st) 6 times. [30 dc]

Round 6 (4dc, 2dc in next st) 6 times. [36 dc]

Round 7 (5dc, 2dc in next st) 6 times. [42 dc]

Round 8 (6dc, 2dc in next st) 6 times. [48 dc]

Round 9 (7dc, 2dc in next st) 6 times. [54 dc]

Round 10 (8dc, 2dc in next st) 6 times. [60 dc]

Round 11 (9dc, 2dc in next st) 6 times. [66 dc]

PRETTY LITTLE THINGS



SHOPPING LIST

Visit your local Scheepjes retailer to purchase all materials listed below, quoting the item numbers where required.

SOLAR SYSTEM AMIGURUMI MOBILE

Scheepjes Maxi Sweet Treat
(100% Mercerised Cotton: 25g/140m)

Yarn A: 106 Snow White x 1 ball

Yarn B: 110 Black x 1 ball

Yarn C: 173 Bluebell x 1 ball

Yarn D: 215 Royal Blue x 1 ball

Yarn E: 280 Lemon x 1 ball

Yarn F: 281 Tangerine x 1 ball

Yarn G: 606 Grass Green x 1 ball

Yarn H: 722 Red x 1 ball

Yarn I: 749 Pink x 1 ball

1.25mm crochet hook

1 x stitch marker

1 x ø 85mm wooden ring
(item no. 95743)

15 x ø 10mm white silicone beads round (item no. 64531-009)

10 x ø 15mm yellow silicone beads round (item no. 64533-645)

1 x musical mobile
(item no. 96550)

Polyester stuffing
(item no. 240130-10)



PRETTY LITTLE THINGS



NOTES

Use this space to write your pattern notes!



All Scheepjes yarns made from **100% cotton** (including the Maxi Sweet Treat used in this project) and the full range of Opry **BPA-free silicone** beads are certified safe for use in projects made for infants.

Round 12 (10dc, 2dc in next st) 6 times. [72 dc]

Round 13 (11dc, 2dc in next st) 6 times. [78 dc]

Round 14 (12dc, 2dc in next st) 6 times. [84 dc]

Round 15 (13dc, 2dc in next st) 6 times. [90 dc]

Round 16 (14dc, 2dc in next st) 6 times. [96 dc]

Rounds 17-33 1dc in each st around.

Round 34 (14dc, dc2tog) 6 times. [90 dc]

Round 35 (13dc, dc2tog) 6 times. [84 dc]

Round 36 (12dc, dc2tog) 6 times. [78 dc]

Round 37 (11dc, dc2tog) 6 times. [72 dc]

Round 38 (10dc, dc2tog) 6 times. [66 dc]

Round 39 (9dc, dc2tog) 6 times. [60 dc]

Round 40 (8dc, dc2tog) 6 times. [54 dc]

Round 41 (7dc, dc2tog) 6 times. [48 dc]

Round 42 (6dc, dc2tog) 6 times. [42 dc]

Round 43 (5dc, dc2tog) 6 times. [36 dc]

Round 44 (4dc, dc2tog) 6 times. [30 dc]

Round 45 (3dc, dc2tog) 6 times. [24 dc]

Round 46 (2dc, dc2tog) 6 times. [18 dc]

Stuff Sun.

Round 47 (1dc, dc2tog) 6 times. [12 dc]

Round 48 (Dc2tog) 6 times. [6 dc]

Finish stuffing, thread yarn through sts and pull tight, fasten off.

PLANETS

EARTH

With Yarn D, ch2.

Rounds 1-14 Rep Rounds 1-14 of Sun. [84 dc]

Rounds 15-29 1dc in each st around.

Rounds 30-42 Rep Rounds 36-48 of Sun. [6 dc]

Finish as per Sun.



SATURN

With Yarn I, ch2.

Rounds 1-12 Rep Rounds 1-12 of Sun. [72 dc]

Rounds 13-17 1dc in each st around.

Round 18 1dc blo in each st around.

Rounds 19-20 1dc in each st around.

Round 21 1dc blo in each st around.

Rounds 22-25 1dc in each st around.

Rounds 26-36 Rep Rounds 38-48 of Sun. [6 dc]

Finish as per Sun.

Ring Covering

Note: wooden ring added later.

Join Yarn C with ss to first unworked front lp of Round 17.

Round 1 (RS) 1dc in each st around. [72 dc]

Rounds 2-5 Rep Rounds 13-16 of Sun. [96 dc]

Rounds 6-9 1dc in each st around.

Rounds 10-13 Rep Rounds 34-37 of Sun. [72 dc]

Fasten off, leaving long tail.

Slide wooden ring onto Saturn, then cover wooden ring. Using yarn tail, whip st top lps of Round 13 of Ring Covering to unworked loops of Round 20 of Saturn to close.

MARS

With Yarn H, ch2.

Rounds 1-11 Rep Rounds 1-11 of Sun. [66 dc]

Rounds 12-23 1dc in each st around.

Rounds 24-33 Rep Rounds 39-48 of Sun. [6 dc]

Finish as per Sun.



PLUTO

With Yarn F, ch2.

Rounds 1-9 (RS) Rep Rounds 1-9 of Sun. [54 dc]

Rounds 10-19 1dc in each st around.

Rounds 20-27 Rep Rounds 41-48 of Sun. [6 dc]

Finish as per Sun.

CHEEKS (MAKE 10)

Note: when fastening off, leave long tail for stitching Cheeks to Sun and Planets.

Sun Cheeks (make 2)

With Yarn F, ch2.

Rounds 1-4 Rep Rounds 1-4 of Sun, fasten off.

[24 dc]

Earth, Saturn, Mars Cheeks (make 2 per Planet)

With Yarn A for Earth, Yarn F for Saturn and Yarn I for Mars, ch2.

Rounds 1-3 Rep Rounds 1-3 of Sun, fasten off.

[18 dc]

Pluto Cheeks (make 2)

With Yarn H, ch2.

Rounds 1-2 Rep Rounds 1-2 of Sun, fasten off.

[12 dc]

CONTINENTS (MAKE 1 OF EACH)

Note: when fastening off, leave long tail for stitching Continents to Earth.

With Yarn G, ch2.

Europe, Asia

Rounds 1-10 Rep Rounds 1-10 of Sun, fasten off.

[60 dc]

Africa

Rounds 1-5 Rep Rounds 1-5 of Sun, fasten off.

[30 dc]

Australia

Rounds 1-4 Rep Rounds 1-4 of Sun, fasten off.

[24 dc]

North America

Rounds 1-8 Rep Rounds 1-8 of Sun, fasten off.

[48 dc]

South America

Rounds 1-6 Rep Rounds 1-6 of Sun, fasten off.

[36 dc]

ASSEMBLY

Use photo as guide.

St Cheeks onto Sun and Planets, then st Continents onto Earth.

With Yarn B, embroider eyes and mouths, with Yarn A, embroider sun rays onto Sun and stars onto Saturn's ring, and with Yarn E, embroider French knots onto Pluto.

Length of chs with silicone beads

Work length of chs from top of Sun and each Planet, attaching silicone beads as you go, as follows: with Yarn A, join with ss to centre of top, *remove hook from loop, insert hook through bead centre, catch lp then pull it to top of bead by extending it, yoh, draw through loop (as if working 1 ch), ch10; rep from * until desired length (see Measurements for length of drop according to sample in photo).

Assemble mobile, then attach Sun and Planets.

TO FINISH

Weave in all ends.



CHOOSING THE RIGHT CROCHET HOOK

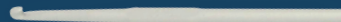
No matter your skill level, shopping for the right crochet hook can be tricky. Read the tips below to find the perfect one for you!



Softgrip handle

These crochet hooks feature metal tips and ergonomic 'softgrip' handles, making them a great choice for comfort and all-round use.

(Knitpro Waves collection featured)



Metal hooks

Best for projects using cotton yarn or crochet thread, these hooks are very durable and long lasting. Less suited to those prone to wrist pain.

(Aluminium hooks featured)



Bamboo hooks

Bamboo crochet hooks are a great choice for acrylic yarn and those who experience wrist pain. They are super light and keep yarn from slipping.

(Tulip bamboo hooks featured)

PRETTY LITTLE THINGS



CHECK OUT THE SCHEEPJES WEBSITE
FOR MORE FUN PATTERNS!

© WWW.SCHEEPJES.COM

For errata information please visit:
www.scheepjes.com/en/errata

