

Astrid's Lavender fields scarf



Table of Contents

THE DESIGN	3
THE SIZE	3
THE YARN.....	3
THE ALTERNATIVE YARN	4
THE TECHNIQUE.....	4
THE VIDEO TUTORIAL	4
THE STITCHES	5
THE COLOURS.....	5
THE COLOUR CHANGES	6
THE ERRORS	7
THE QUESTIONS.....	7
THE CHART	8
THE SOLID STITCHES.....	11
THE PATTERN.....	11
THE BORDER	12
THE ACTION	12
THE EXTRA INFORMATION ON THE TECHNIQUE.....	26
THE TRELIS PHOTO GUIDE: HOW TO START THE PROJECT.....	27

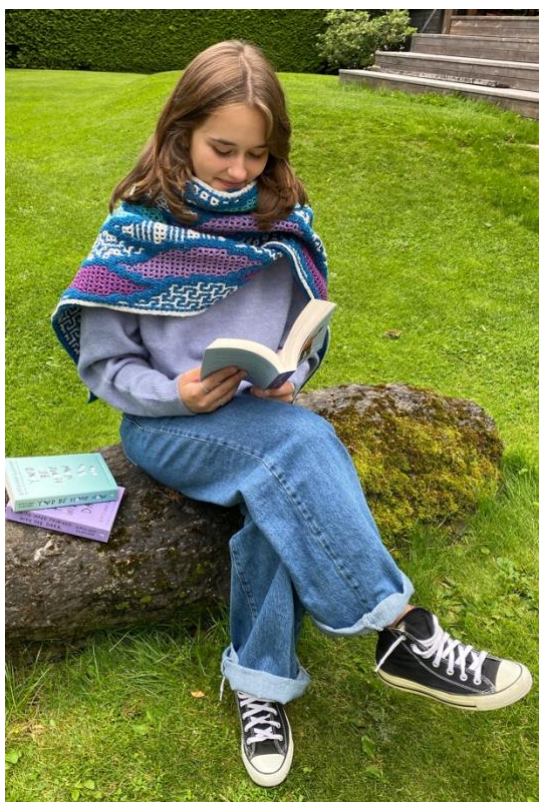




Image by Hans© from Pixabay, with permission.

The design

I love lavender, and am always mesmerised by the huge lavender fields in bloom, with the waves of violet and green... so I depicted them in this scarf. Of course it can be done in any shades wanted, so it could be turned into any other type of field ☺

The size

The finished shawl measures approximately 32cm wide x 2m long. The width of the scarf is 34 windows, and it has 211 rows.

The yarn

The whole scarf weighs approximately 480g.

The colour A is the one used in the border and the line drawing (734 Opale), the colour B is the one used in the background (white, violets and greens). I used 270g A and 210g of all the other colours.

The section "The colours" below gives you information on colours and amounts used. I chose for this project Scheepjes Terrazzo, felted tweed yarn, DK weight, 175 metres per 50gr, and used a 4,0mm hook as suggested for this yarn.

The alternative yarn

I tried a sample using Scheepjes Stone Washed XL and River Washed XL (both: Aran weight, 70% Cotton x 30% Acrylic, 50g/75m) and used a 5mm hook. This will give you a larger scarf, my estimates are that the full pattern would produce a scarf which is 44cm wide and up to 260cm long. If it is too long for you, you can decide to stop at a desired length.



The pictures show the sample of the first 32 rows, and the comparison with the scarf

The colours I used for this sample and an **estimate** of how much yarn it would take to make the whole scarf is detailed in the table below.

Type	Code	Nr	Name	ESTIMATE
RW XL	A rows	989	Yarra	850g
SW XL	WH	841	Moon Stone	360g
SW XL	DG	855	Green Agate	60g
SW XL	LG	868	Larimar	60g
SW XL	DP	851	Deep Amethyst	60g
SW XL	LP	858	Lilac Quartz	60g

The technique

The technique is interlocking crochet, also known as double filet, wacky weave, and other names. At the very end of this file I have added information on this technique, as well as a photo guide on how to start a project. It is added at the end so that if you already know the technique you can avoid printing the last pages.

The video tutorial

If you are unsure about the technique and want to first watch some tutorials, I have some in my YouTube channel: Astrid's Interlocking Crochet. The pattern I used on these videos can be downloaded for free from Ravelry. Here are some links:

Free pattern in Ravelry: [Astrid's Christmas tangle potholder](#)

YouTube channel: [Astrid's Interlocking crochet YouTube channel](#)

The stitches

(US terminology)

ch	Chain	The pattern is abbreviated to make it simple to read. It consists of B's and F's with a number next to it. To the right is the explanation of the abbreviations.		
Sk	Skip		B1	dcib, ch1
dc	Double crochet		B3	(dcib, ch1)x3 times
dcib	Double crochet in the back		F1	dcif, ch1
dcif	Double crochet in the front		F2	(dcif, ch1) twice
sc	Single crochet			
hdc	Half double crochet			

Row ends: Note: the B rows, end with B or F stitches, however the last stitch does not have a chain 1. I always end all rows with chain 3, instead of doing it at the beginning of the next, it is just a habit.

Solid stitches: The graph has some grey areas (outlines in colour A and hearts in colour B), those are to be done with solid stitches.

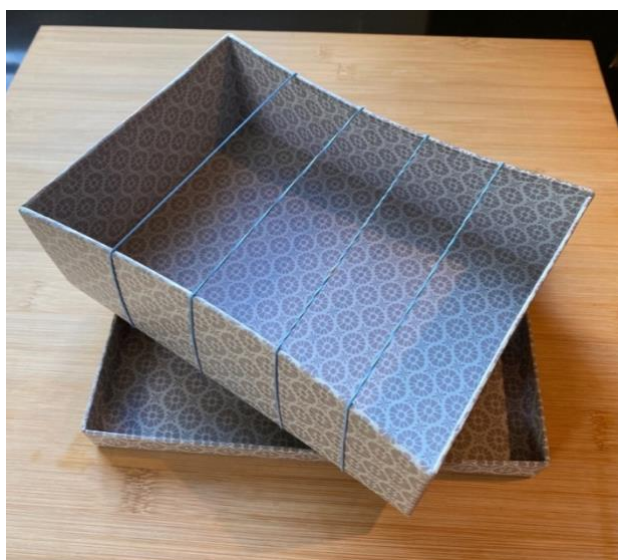
The solid stitches not only highlight the drawing, but are perfect for "hiding" simple colour changes behind them. Full instructions on how to make the solid stitches and how to do the colour changes is added below.

The colours

I have used the Scheepjes Terrazzo. My measurements are in grams. You use yarn directly from the skeins and do not have to make different bobbins.

Code	Nr	Name	Used	Notes
A rows	734	Opale	270g	You need only one skein at a time throughout the whole blanket.
WH	745	Pergamena	110g	You will need 3 skeins at a time on all rows.
DG	752	Laguna	25g	You will use one skein at a time, all B rows take anywhere from 2 to 4 of these colours.
LG	737	Mediterraneo	25g	
DP	729	Prugna	28g	
LP	727	Cardo	22g	

I got irritated with all the different balls of yarn all over the place and them getting tangled, so I found a solution I thought I would share with you. Some type of box, which is not deeper than the balls of yarn, with elastic bands. The elastic bands are moved right and left, to "hold" the yarn as the balls get thinner. You place them in the order used, and when you turn your work, you turn the box 180 degrees. Never a tangle!








The colour changes

If you need inspiration, here is the way I do colour changes:

The very first time you will insert a new colour, you work your first colour until the dc, then chain 1 with the new colour and continue with the second colour. It is returning back and forth these colour changes that can get tricky.

When you are working your first colour and “meet” a new one, you dc and chain 1. Without taking the yarn off your hook, you send the hook through the next stitch and pick up a loop of the next colour, chain 2 (now two loops on hook), yarn over with new colour and pull through 2, continue as normal with second colour. This is an ok system, but the chains are visibly different than the other dc’s and don’t look so good. However it is a fast way to change colour and perfect for using it on the back side of the blanket, and even better if it is behind solid stitches. Below is a photo guide of the steps

	<p>Send the hook through the next stitch and</p>
	<p>.... pick up a loop of the next colour</p>
	<p>Chain 2 (you have two loops on your hook)</p>
	<p>Pull the end of the chain 2 (white here) through the loop of your previous stitch (yellow here)</p>
	<p>Chain one and continue with the stitches. When you meet a stitch below that has two colours joined in the previous row, send your hook catching the side loop as well to anchor it better.</p>
<p>The example above is when you have to make the change “before you meet the new colour”, then you have a strand of the new colour (white), which you afterwards stitch over to fasten it.</p>	
<p>If you meet the new colour but don’t need to change before another few stitches, you carry that yarn stitching over it until you use it.</p>	

The errors

This is a hand-made item. The drawing, writing the stitches and making it are all made by hand and not generated by software. The pattern has been tested before publishing, and it looks as it is accurate. However, to err is human. To be honest, I have never “not had to update” a pattern after publishing. If that happens, you will receive an email from Ravelry saying that the pattern has been updated, the new file will be attached, and I will write what the change is so that you don't have to figure it out yourself.

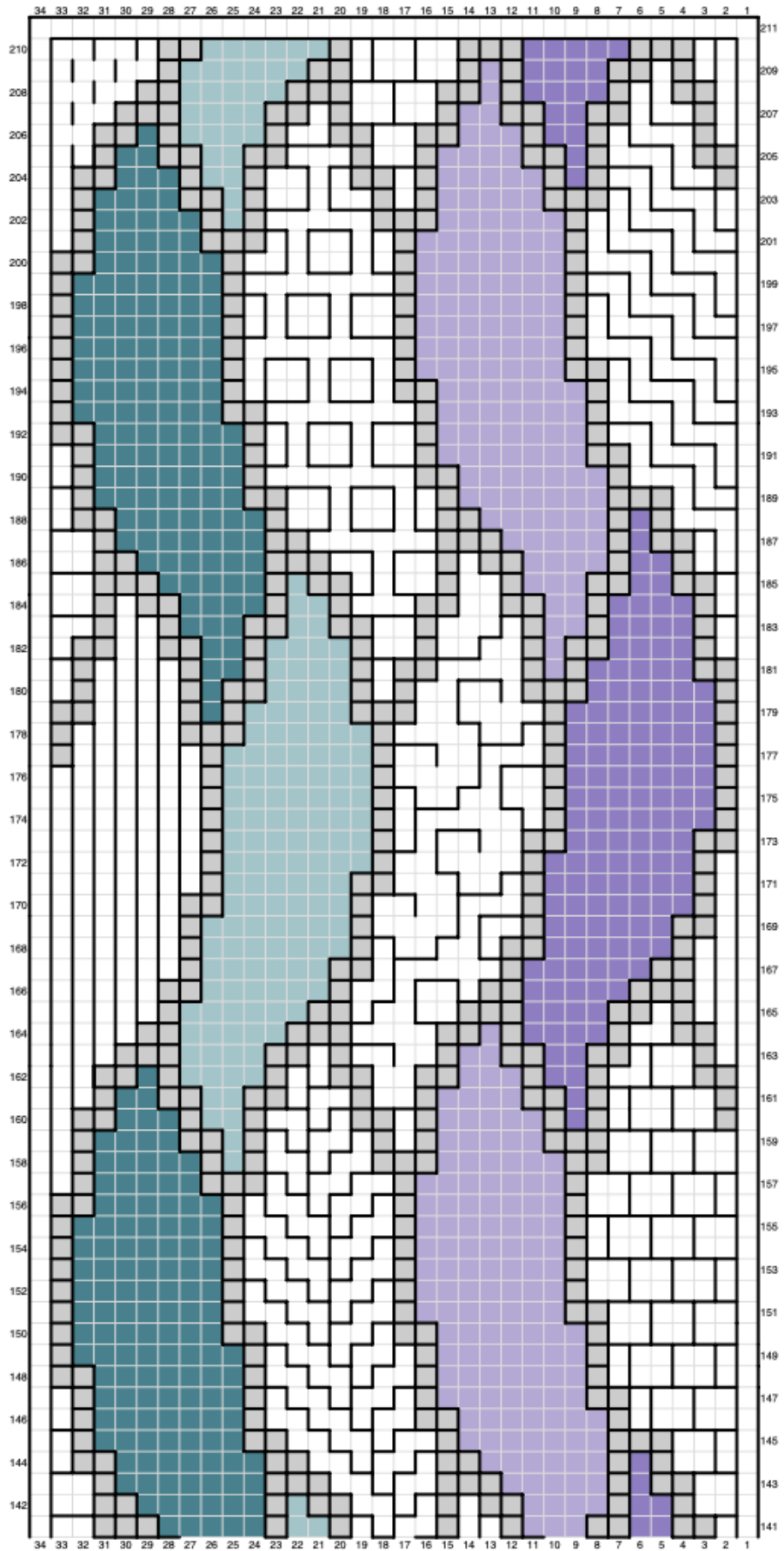
The questions

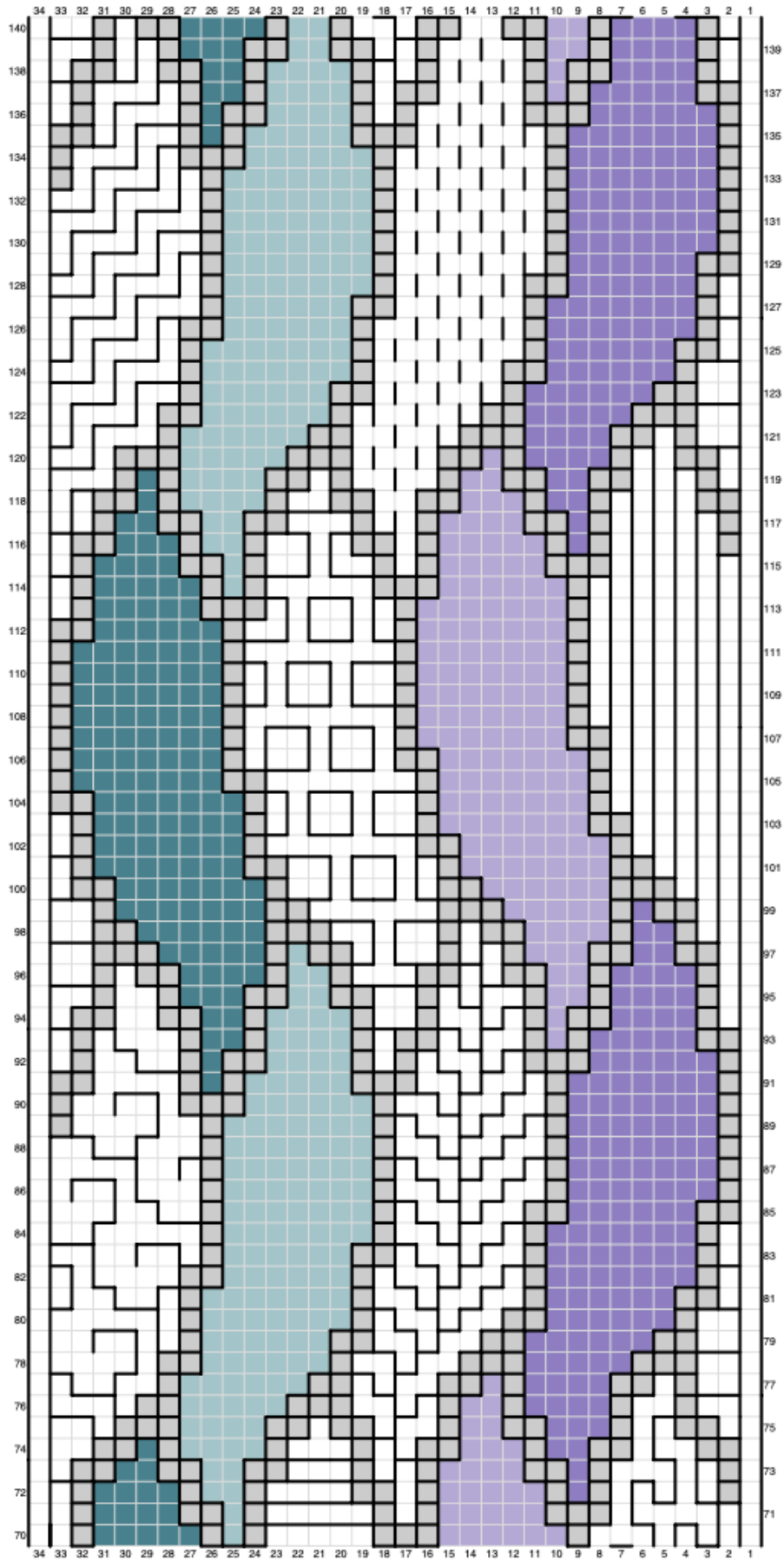
Feel free to contact me if you have any questions. You can reach me at aschandy@yahoo.no via email or you can join my Facebook group “Astrid's Interlocking crochet lab”. You find my work also in Instagram at [ati_stitches](https://www.instagram.com/ati_stitches). If you were to need files with larger fonts or graphs that are much larger, feel free to contact me and I will do everything I can to help you. You can make this product as is, or change it, or use parts of it in other projects. You may sell your work as you please. However, the pattern is my property and cannot be sold, copied or shared, partially or totally. When posting your work, please reference my pattern. Thank you for your support and care of all the work that goes behind each pattern!

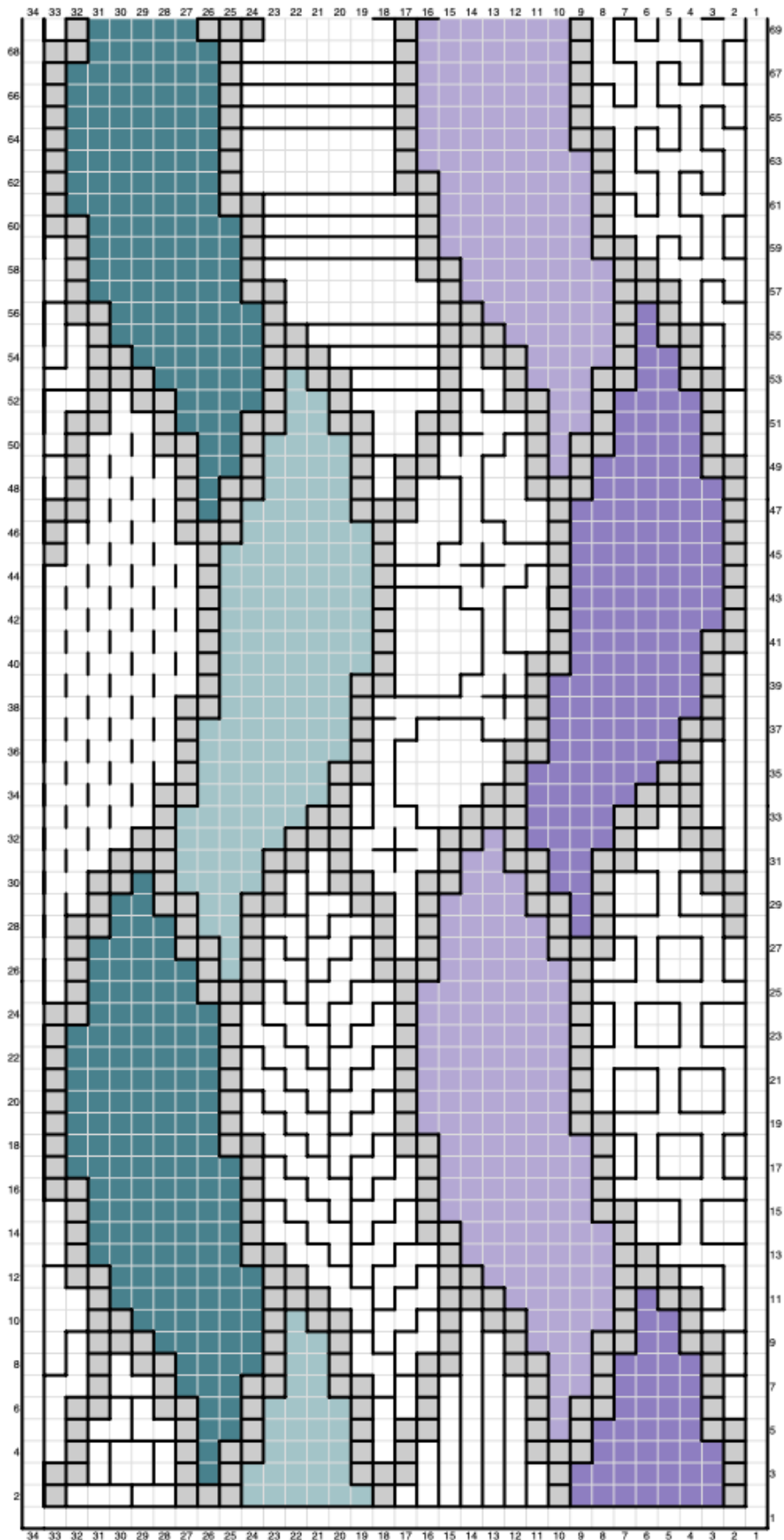


The reverse side of the scarf.

The chart







The solid stitches

The way to work these stitches is a bit different, but if you follow the instructions closely and work a bit slower, you should be fine. The big difference is that on one same row, sometimes we make a chain and skip one, other times we don't. Simply said, "solid stitches" are good old fashioned double crochet stitches, done on a row.



Some basics:

- Part of the row is normal interlocking, part solid stitches.
- The "new" stitches you have here are either dcib (dc in the back) or dcif (dc in the front).
- The dcif and dcib "sets" of stitches have always odd number of stitches. The first and every second after go on dc from the previous row, the rest go on the chain space from the row below.
- You make the dc stitches on a row WITHOUT *chain 1 – skip 1*.
- At the end of each "set" you make, *yes* a *chain 1 – skip 1* once.

Example: F5, B1, F2, 5dcif, B2, 3dcif, 3dcif, B2

You make:

- a) F5, B1 and F2 as normal ending in the last *chain 1 – skip 1* from the F2...
- b) then you make 5 dc on a row (the first, third and fifth on the next 3 dc from previous row, and the second and fourth in the chain one spaces in between)...
REMEMBER TO *chain 1 – skip 1* after the set of dcif! ...
- c) Then you make B2 as usual,
- d) Then a set of 3dcif... *chain 1 – skip 1*... another set of dcif... (**when two sets of dcif (or dcib) are together, you have to *chain 1 – skip 1* in between!**)...
- e) And finish off with B2 as usual.

The pattern

The table below with the pattern have grey rows for all A rows, hopefully it is easier to read.

When you are working on even numbered rows, you are working with the back of the blanket facing you. It may help to know that when working on even rows, you are following the drawing from left to right.

When you are working on odd numbered rows, you are working with the front of the blanket facing you. When working on odd rows, you are following the drawing from right to left.

All rows should start with ch3, and at the beginning of each row, pay attention to where the B colour should hang, either to the front or the back. This is marked in the second column of the pattern.

PLEASE NOTE:

- Some rows start in one page and continue in the next.
- Be careful, when working with A rows (black), make sure the colour yarns do not get tangled, that you do not "grab" the colour yarn with your A stitches by mistake. A good tip is to make part of row A, then

part of row B with the colour changes, then continue with A, then colours again, and so on, until you feel comfortable on where the colours should hang.

- As you work with A rows, the B colour threads should hang to the back of the shawl, that means towards you when working even rows, and away from you when working odd rows.

The border

I did the following, two different rounds:



With colour B: on colour B windows, 2sc in every window, 5sc in each corner. I followed the fish colours.

With colour A: on colour A windows...

... long side of shawl: 2 hdc in every window. Corners: 2hdc, 1hdc grabbing the middle (3rd) sc of the colour B corner window, 2 hdc.

... short side of shawl: you have 48 windows. You will be working in repeats of 4 windows as follows:

- 2hdc in each window on 4 windows = 8hdc
- Ch 5, yarn off hook, send hook through 2nd hdc, grab chain and pull through, ch 1
- Work the following stitches in the chain: 1hdc, 2dc, 1trc, ch1, slip stitch in front and side loop of last trc (picot), 1trc, 2dc, 1hdc, end with slip stitch in 4th window.
- Repeat the 3 steps above for every 4 windows.

The action

Let's get started!

Remember, the second column tells you where the B colour should hang at the start of each A row, and the last stitch of the B rows is not followed by a chain 1!

Row nr	B colour	Stitches
1A		(With blue) Chain 72, start in 6 th ch from the hook: (dc1, ch1, sk1) x 33 times, dc in the last chain, you should have 34 windows.
1B		(With white) Chain 69, change to DP (new) and chain 1. Lay your chain over the trellis and in 6 th ch from the hook and through the second A window and still with DP : B8. You will continue adding colours as follows: WH (new): B8 LG (new): B7 WH (new): B9, F1
2A	B	3dcib, F2, B1, F1, 7dcib, F5, 3dcib, B6, 3dcib, F6, 3dcib, dc
As of now B rows are split (just to save paper) into 3 columns. Read first the column on the left all the way down, then the column in the middle and then the one on the right. Note: some rows may start on one page and continue in another , so you will have to complete the column on the left on both pages before moving to the next column.		
The rows as you know, start with ch3 . It is a good habit to make the ch3 when you end a row, to have it ready. Whether you do as a habit or not, you should do it in this scarf , to have the white rim. The alternative is to remember to always make the ch3 at the start with white, regardless what the first stitch colour in the B row is, but it would be easy to forget.		
2B		WH : F6 LG : F1, B5, F1 DP : F1, B7

		DG (new): F2	WH : F2, B6	WH : F1, B1
3A	F	3dcif, B6, 3dcif, F5, 7dcif, B4, 3dcif, 3dcif, F1, B1, F1, 5dcif, dc		
3B		DP : B1, F6, B1 WH : B2, F5, B2	LG : B1, F4, B1 DG : B1, F1	WH : B1, F4, B2, F1
4A	B	B1, 3dcib, B1, F1, B1, 3dcib, 5dcib, F3, 3dcib, 3dcib, B4, 7dcib, F5, 3dcib, dc		
4B		WH : B1, F5 DG : F1, B1, F1 LG : F1, B4	WH : F1, B1, F2, B4 LP (new): F2	DP : F1, B5, F1 WH : F1, B1
5A	F	5dcif, B4, 3dcif, 3dcif, F3, 5dcif, 3dcif, B3, 3dcif, B1, 3dcif, B1, F1, B1, 3dcif, F1, dc		
5B		WH : B1 DP : B1, F4, B1 LP : B1, F1	WH : B1, F4, B2, F1 LG : B1, F4	DG : B1, F2 WH : (B2, F2)x2
6A	B	(B1, 5dcib)x2, F1, 3dcib, F3, 3dcib, B1, 3dcib, B3, 3dcib, 5dcib, F3, 3dcib, B1, dc		
6B		WH : B1, F4 DG : F2, B2 LG : F2, B2, F1	WH : F2, B1, F1, B4 LP : F1, B1, F1	DP : F1, B4 WH : F1, B2
7A	F	F1, 3dcif, B3, 3dcif, B1, 3dcif, F3, 3dcif, F1, 5dcif, B1, 5dcif, B2, 3dcif, B1, 3dcif, B1, F1, dc		
7B		WH : B1 DP : B1, F4 LP : B1, F2	WH : B2, F2, B3, F1, B1 LG : B1, F2	DG : B2, F3 WH : B2, F1, (B1, F1)x2
8A	B	B2, 3dcib, 5dcib, F3, (3dcib, F1)x2, (B1, 5dcib)x2, F1, 3dcib, F3, 3dcib, B1, dc		
8B		WH : B2, F2 DG : F2, B4 LG : F1, B2	WH : F1, B1, F1, B1, F2, B2 LP : F2, B2	DP : F2, B2, F1 WH : F1, B2
9A	F	F1, 5dcif, B1, 5dcif, B2, 3dcif, F1, 3dcif, B1, F2, 3dcif, B1, 3dcif, B4, 7dcif, F2, dc		
9B		WH : B2 DP : B1, F2 LP : B2, F3	WH : B2, F1, (B1, F1)x2, B1 LG : B2, F1	DG : B1, F5, B1 WH : B3, F2
10A	B	B1, F1, 5dcib, F5, 3dcib, 5dcib, B1, F1, B1, 3dcib, 5dcib, F3, (3dcib, F1)x2, B1, dc		
10B		WH : B2 DG : F2, B6 LG : F2 (cut)	WH : F2, B1, F1, B1, F3 LP : F2, B4	DP : F1, B1, F1 WH : F2, B2
11A	F	F2, 5dcif, 3dcif, B4, 7dcif, B1, F2, B1, 7dcif, B6, 3dcif, B1, F1, dc		
11B		WH : F2, B1 DP : B2 (cut)	LP : B1, F5, B2 WH : (B1, F1)x3, B2	DG : B1, F7 WH : B2, F2
12A	B	B1, 5dcib, F6, 5dcib, F1, B2, F1, B1, 5dcib, F5, 7dcib, F1, B2, dc		
12B		WH : F1 DG : F2, B6, F1	WH : F2, (B1, F1)x3 LP : F2, B6	WH : F5, B2
13A	F	F1, B3, 5dcif, B6, 3dcif, B1, F1, B1, F2, B1, 5dcif, B6, 3dcif, F1, dc		
13B		WH : B2, F1, B2 LP : B1, F7	WH : B3, F1, (B1, F1)x2, B1	DG : B1, F7 WH : B1, F2
14A	B	B1, 3dcib, F6, 3dcib, F1, B1, F1, B2, F1, 5dcib, F6, 3dcib, F1, B2, F1, B1, dc		
14B		WH : B1 DG : F1, B7	WH : F1, (B1, F1)x3, B1 LP : F2, B6, F1	WH : F1, B6
15A	F	F1, B1, F2, B1, 5dcif, B6, 3dcif, F1, B1, F2, B1, F1, 3dcif, B6, 3dcif, F1, dc		
15B		WH : B2, F1, B3 LP : B1, F7	WH : B2, F1, (B1, F1)x2, B1	DG : B1, F7 WH : B2, F1
16A	B	5dcib, F6, 3dcib, F1, B1, F1, B2, F1, 3dcib, F6, 3dcib, F5, B1, dc		
16B		DG : F2, B7 WH : F1, (B1, F1)x3, B1	LP : F1, B7	WH : F2, B1, F2, B1, F1, B1
17A	F	F3, B1, F2, 3dcif, B6, 3dcif, F1, B1, F2, B1, F1, 3dcif, B7, 3dcif, dc		
17B		WH : F6 LP : B1, F7	WH : B2, F1, (B1, F1)x2, B1	DG : B2, F7 WH : B1, F1
18A	B	3dcib, F6, 5dcib, F1, B2, F1, B1, 5dcib, F6, 3dcib, B2, F1, B3, dc		

18B		DG: F1, B7 WH: F2, (B1, F1)x3	LP: F2, B6, F1	WH: F2, B1, F2, B1, F1, B1
19A	F	F1, B5, 5dcif, B6, 3dcif, B1, F2, B1, F1, B1, 3dcif, B6, 3dcif, dc		
19B		WH: F1, B2, F1, B3 LP: B1, F7	WH: (B1, F1)x4 DG: B1, F7	WH: B1, F1
20A	B	3dcib, F6, 3dcib, B1, F1, B2, F1, B1, 3dcib, F6, 3dcib, B1, F1, B2, F1, B2, dc		
20B		DG: F1, B7 WH: F2, (B1, F1)x3	LP: F1, B7	WH: F1, B8
21A	F	F2, B1, F2, B1, F1, 3dcif, B6, 3dcif, B1, F2, B1, F1, B1, 3dcif, B6, 3dcif, dc		
21B		WH: F1, (B2, F1)x2 LP: B1, F7	WH: (B1, F1)x4 DG: B1, F7	WH: B1, F1
22A	B	3dcib, F6, 3dcib, B1, F1, B2, F1, B1, (3dcib, F6)x2, B1, dc		
22B		DG: F1, B7 WH: F2, (B1, F1)x3	LP: F1, B7	WH: F2, (B1, F2)x2, B1
23A	F	F1, (B1, F2)x2, 3dcif, B6, 3dcif, B1, F2, B1, F1, B1, 3dcif, B6, 3dcif, dc		
23B		WH: F7 LP: B1, F7	WH: (B1, F1)x4 DG: B1, F6, B1	WH: B1, F1
24A	B	5dcib, F5, 3dcib, B1, F1, B2, F1, B1, 3dcib, F6, 3dcib, (B2, F1)x2, B1, dc		
24B		WH: F1 DG: F1, B5, F1	WH: F2, (B1, F1)x3 LP: F1, B7	WH: F2, (B1, F2)x2, B1
25A	F	F1, (B6, 3dcif)x2, B1, F1, B1, F2, 7dcif, B4, 3dcif, F1, dc		
25B		WH: B1, F1, B2, F1, B2 LP: B1, F6, B1	WH: B3, F1, B1, F1, B1 LG (new): B2	DG: B1, F5 WH: B1, F2
26A	B	B1, 3dcib, F4, 3dcib, 3dcib, F1, B2, F1, 7dcib, F5, 3dcib, F1, B2, F1, B3, dc		
26B		WH: B1 DG: F1, B4, F1	LG: F1, B1 WH: F1, (B1, F1)x2, B1, F2	LP: F1, B5, F1 WH: F2, B7
27A	F	F3, B1, F2, 7dcif, B4, 3dcif, 3dcif, F1, B1, F2, 3dcif, 5dcif, B3, 3dcif, F1, dc		
27B		WH: B1, F1, B2, F1, B1 DP (new): B2 LP: B1, F5	WH: B1, F1, B2, F1, B1, F1, B1 LG: B1, F1, B1	DG: B1, F3, B1 WH: B1, F2
28A	B	B1, 5dcib, F2, (3dcib, F1)x2, B2, F1, (3dcib, 3dcib, F4)x2, 3dcib, dc		
28B		WH: B1, F1 DG: F1, B2, F1 LG: F1, B2	WH: F3, B1, F3, B1 LP: F1, B4, F1	DP: F1, B1 WH: F3, B1, F3, B1
29A	F	3dcif, B1, F2, B1, 3dcif, 5dcif, B3, 3dcif, 5dcif, B1, F1, 5dcif, B1, 5dcif, B1, 3dcif, F2, dc		
29B		WH: B2, F4 DP: B1, F1, B1 LP: B1, F3, B1	WH: B1, F1, B4, F1 LG: B2, F2, B1	DG: B1, F1, B1 WH: B1, F3
30A	B	B1, F1, 5dcib, 3dcib, F3, 3dcib, B1, 5dcib, F1, 5dcib, F2, (3dcib, F1)x2, B2, 5dcib, dc		
30B		WH: B2, F1 DG: F2 (cut) LG: F1, B4	WH: F2, B1, F2, B2, F1 LP: F1, B2, F1	DP: F1, B2 WH: F3, B1, F3, B1
31A	F	F1, 3dcif, B2, 5dcif, B1, 5dcif, B1, 3dcif, B1, F1, B1, 3dcif, 5dcif, B3, 7dcif, B1, F2, dc		
31B		WH: F1, B4 DP: B2, F2, B1	LP: B1, F1, B1 WH: B1, F1, B2, F1, B2	LG: B2, F4 WH: B3, F4
32A	B	(B1, F1)x2, 5dcib, F4, 7dcib, F1, B1, F1, 5dcib, 3dcib, F3, 3dcib, F1, 5dcib, B1, dc		
32B		WH: B4, F1 LG: F1, B5, F1	WH: F3, B2, F2 LP: F2 (cut)	DP: F1, B4 WH: F2, B1, F2, B2
33A	F	F2, 3dcif, 5dcif, B3, 7dcif, (B1, F1)x2, 5dcif, B5, 3dcif, B1, F1, B1, F2, dc		
33B		WH: F2, B2 DP: B2, F4	WH: B3, F2, B1, F2 LG: B2, F5, B1	WH: B1, F6
34A	B	(B1, F1)x2, B1, 5dcib, F5, 3dcib, B2, F3, 5dcib, F4, 7dcib, B2, dc		
34B		WH: B5, F1 LG: F1, B6	WH: F2, B5, F1 DP: F1, B5, F1	WH: F2, B3

35A	F	F2, 5dcif, B5, 3dcif, B4, F1, 5dcif, B5, 3dcif, F1, B1, F1, B1, F2, dc		
35B		WH: F2 DP: B2, F5, B1	WH: B1, F6 LG: B2, F6	WH: B1, F7
36A	B	(B1, F1)x3, 3dcib, F6, 3dcib, B1, F4, 5dcib, F5, 3dcib, B2, dc		
36B		WH: B6 LG: F1, B7	WH: F1, B1, F1, B3, F2 DP: F1, B6	WH: F2, B2
37A	F	F1, 5dcif, B5, 3dcif, B1, F1, B2, F1, B1, 3dcif, B6, 3dcif, F1, B1, F1, B1, F2, dc		
37B		WH: F1 DP: B2, F6	WH: B1, F2, B3, F1, B1 LG: B1, F6, B1	WH: B1, F7
38A	B	(B1, F1)x3, 5dcib, F5, 3dcib, F5, B1, 3dcib, F6, 3dcib, B1, dc		
38B		WH: B6, F1 LG: F1, B6	WH: F5, B1, F2 DP: F1, B7	WH: F1, B2
39A	F	F1, 3dcif, B6, 3dcif, F1, B1, F1, B2, 5dcif, B5, 3dcif, (B1, F1)x2, B1, F2, dc		
39B		WH: F1 DP: B1, F6, B1	WH: B1, F2, B1, F3 LG: B2, F6	WH: B1, F8
40A	B	(B1, F1)x3, B1, 3dcib, F6, 3dcib, F3, B1, F1, 5dcib, F5, 3dcib, B1, dc		
40B		WH: B7 LG: F1, B7	WH: F1, B5, F2 DP: F1, B6	WH: F2, B1
41A	F	5dcif, B5, 3dcif, B1, F2, B3, 3dcif, B6, 3dcif, (B1, F1)x2, B1, F2, dc		
41B		DP: B2, F6 WH: B1, F7	LG: B1, F7	WH: B1, F8
42A	B	(B1, F1)x3, B1, 3dcib, F6, 3dcib, F3, B2, F1, 3dcib, F6, 3dcib, dc		
42B		WH: B7 LG: F1, B7	WH: F1, B3, F1, B3 DP: F1, B7	WH: F1, B1
43A	F	3dcif, B6, 3dcif, (B1, F1)x2, B2, 3dcif, B6, 3dcif, (B1, F1)x2, B1, F2		
43B		DP: B1, F7 WH: B1, F1, B1, F2, B3	LG: B1, F7	WH: B1, F8
44A	B	(B1, F1)x3, B1, 3dcib, F6, 3dcib, F3, B1, F1, B1, 3dcib, F6, 3dcib, dc		
44B		WH: F1, B6 LG: F1, B7	WH: F3, B1, F2, B1, F1 DP: F1, B7	WH: F1, B1
45A	F	3dcif, B6, 3dcif, B2, F1, B1, F1, B1, 3dcif, B6, 3dcif, (B1, F1)x2, B1, 3dcif, dc		
45B		DP: B1, F7 WH: B3, F2, B1, F2	LG: B1, F6, B1	WH: B2, F5, B1, F1
46A	B	3dcib, (B1, F1)x2, 7dcib, F5, 3dcib, F2, (B1, F1)x2, 3dcib, F6, 3dcib, dc		
46B		WH: F2, B4 DG (new): F2	LG: F1, B5, F1 WH: F2, B3, F1, B2	DP: F1, B7 WH: F1, B1
47A	F	3dcif, B6, 3dcif, B2, F2, B1, 7dcif, B4, 3dcif, 3dcif, F1, B1, F1, 5dcif, dc		
47B		DP: B1, F6, B1 WH: B2, F5, B2	LG: B1, F4, B1 DG: B1, F1	WH: B1, F4, B2, F1
48A	B	B1, 3dcib, F1, B1, F1, 3dcib, 5dcib, F3, 3dcib, 3dcib, F1, B2, F1, 7dcib, F5, 3dcib, dc		
48B		WH: B1, F1, B4 DG: F1, B1, F1 LG: F1, B4	WH: F1, B1, F3, B3 LP (new): F2	DP: F1, B5, F1 WH: F1, B1
49A	F	5dcif, B4, 3dcif, 3dcif, B1, F1, B1, 5dcif, 3dcif, B3, 3dcif, B1, 3dcif, F1, B1, F1, 3dcif, F1, dc		
49B		WH: B1 DP: B1, F4, B1 LP: B1, F1	WH: B1, F1, B1, F2, B3 LG: B1, F4	DG: B1, F2 WH: B2, F3, B2, F1
50A	B	B1, 3dcib, F1, B1, 5dcib, F1, 3dcib, F3, 3dcib, F1, 3dcib, B1, F1, B1, 3dcib, 5dcib, F3, 3dcib, B1, dc		
50B		WH: B1, F2, B2 DG: F2, B2 LG: F2, B2, F1	WH: F1, B2, F3, B1, F1 LP: F1, B1, F1	DP: F1, B4 WH: F1, B2
51A	F	F1, 3dcif, B3, 3dcif, B1, 3dcif, B2, 5dcif, (B1, 5dcif)x2, B2, 3dcif, B1, 5dcif, F1, dc		
51B		WH: F1	WH: B3, F1, B2, F2, B1	DG: B2, F3

		DP: B1, F4 LP: B1, F2	LG: B1, F2	WH: B2, F1, B2, F2
52A	B	B1, F1, 3dcib, 5dcib, F3, 3dcib, F1, 3dcib, F3, 3dcib, B1, 5dcib, F1, 3dcib, F3, 3dcib, B1, dc		
52B		WH: F4 DG: F2, B4 LG: F1, B1, F1	WH: F7, B1 LP: F2, B2	DP: F2, B2, F1 WH: F2, B1
53A	F	F1, 5dcib, B1, 5dcib, B2, 3dcib, B1, 3dcib, B3, 5dcib, 3dcib, B4, 7dcib, B1, F1, dc		
53B		WH: F1, B1 DP: B1, F2 LP: B2, F3	WH: B2, F1, B6 LG: B2 (cut)	DG: B1, F5, B1 WH: B2, F1, B1, F1
54A	B	B2, 5dcib, F5, 7dcib, F4, 3dcib, 5dcib, F3, 3dcib, F1, 3dcib, B2, dc		
54B		WH: B2 DG: F2, B6	WH: F10 LP: F2, B4	DP: F1, B1, F1 WH: F1, B3
55A	F	F2, 5dcib, 3dcib, B4, 7dcib, B5, 5dcib, B6, 3dcib, F2, dc		
55B		WH: F1, B2 DP: B1, F1	LP: B1, F5, B1 WH: B9	DG: B1, F7 WH: B2, F2
56A	B	B1, 5dcib, F6, 3dcib, F6, 5dcib, F5, 3dcib, 3dcib, B1, F1, B1, dc		
56B		WH: F1 DG: F2, B6, F1	WH: F1, B7 LP: F2, B6	DP: F2 (cut) WH: F1, B2, F1, B1
57A	F	F3, 7dcib, B6, 3dcib, B6, 5dcib, B6, 3dcib, F1, dc		
57B		WH: F1, B1, F1, B2 LP: B1, F7	WH: B2, F6, B1 DG: B1, F7	WH: B1, F2
58A	B	B1, (3dcib, F6)x2, 5dcib, F6, 5dcib, F3, B1, dc		
58B		WH: B1 DG: F1, B7	WH: F8 LP: F2, B6, F1	WH: F2, (B1, F1)x2, B1
59A	F	F5, 5dcib, (B6, 3dcib)x3, F1, dc		
59B		WH: F3, B1, F1, B1 LP: B1, F7	WH: B8 DG: B1, F7	WH: B2, F1
60A	B	5dcib, F6, (3dcib, F6)x2, 3dcib, F3, B3, dc		
60B		DG: F2, B6, F1 WH: F8	LP: F1, B7	WH: F1, (B1, F1)x3, B1
61A	F	F1, B2, F3, 3dcib, B6, 3dcib, B6, 5dcib, B6, 3dcib, dc		
61B		WH: F1, B1, F3, B1 LP: B1, F7	WH: B9 DG: B1, F7	WH: B1, F1
62A	B	(3dcib, F6)x2, 5dcib, F6, 3dcib, F1, B5, dc		
62B		DG: F1, B7 WH: F1, B7	LP: F2, B7	WH: F1, (B1, F1)x2, B3
63A	F	F2, B3, F1, 3dcib, B7, 3dcib, (B6, 3dcib)x2, dc		
63B		WH: F1, B1, F1, B1, F2 LP: B2, F7	WH: B1, F7 DG: B1, F7	WH: B1, F1
64A	B	(3dcib, F6)x3, 5dcib, B4, F1, B1, dc		
64B		DG: F1, B7 WH: F8	LP: F1, B7	WH: F2, B1, F1, B3, F1, B1
65A	F	F4, B3, 3dcib, (B6, 3dcib)x3, dc		
65B		WH: F1, (B1, F1)x3 LP: B1, F7	WH: B8 DG: B1, F7	WH: B1, F1
66A	B	(3dcib, F6)x3, 3dcib, B3, F3, B1, dc		
66B		DG: F1, B7 WH: F8	LP: F1, B7	WH: F2, B3, F1, B1, F1, B1
67A	F	F6, B1, 3dcib, (B6, 3dcib)x3, dc		
67B		WH: F3, (B1, F1)x2 LP: B1, F7	WH: B8 DG: B1, F6, B1	WH: B1, F1
68A	B	5dcib, F5, (3dcib, F6)x2, 3dcib, B1, F3, B3, dc		

68B		WH: F1 DG: F1, B5, F1	WH: F2, B6 LP: F1, B7	WH: F1, B2, F1, (B1, F1)x2, B1
69A	F	F1, B2, F4, 3dcif, B6, 3dcif, B5, 7dcif, B4, 3dcif, F1, dc		
69B		WH: F1, B1, F3, B1, F1 LP: B1, F6, B1	WH: B2, F5 LG (new): B2	DG: B1, F5 WH: B1, F2
70A	B	B1, 3dcib, F4, 3dcib, 3dcib, F4, 7dcib, F5, 3dcib, F2, B5, dc		
70B		WH: B1 DG: F1, B4, F1	LG: F1, B1 WH: F8	LP: F1, B5, F1 WH: F2, (B1, F1)x2, B3
71A	F	F2, B3, F1, 7dcif, B4, 3dcif, 3dcif, B4, 3dcif, 5dcif, B3, 3dcif, F1, dc		
71B		WH: B2, F1, B1, F2 DP (new): B2 LP: B1, F5	WH: B1, F1, B6 LG: B1, F1, B1	DG: B1, F4 WH: B1, F2
72A	B	B1, 3dcib, F3, 3dcib, F1, 3dcib, F3, 5dcib, 3dcib, F4, 3dcib, 3dcib, B4, 3dcib, dc		
72B		WH: F1 DG: F2, B2, F1 LG: F1, B2	WH: F7, B1 LP: F1, B4, F1	DP: F1, B1 WH: F1, B1, F1, B3, F1, B1
73A	F	3dcif, F2, B2, 3dcif, 5dcif, B3, 3dcif, F1, 3dcif, B2, 5dcif, (B1, 5dcif)x2, F1, dc		
73B		WH: B2, F1, B1, F1, B1 DP: B1, F1, B1 LP: B1, F3, B1	WH: B2, F1, B4 LG: B2, F2, B1	DG: B1, F1, B1 WH: B2, F2
74A	B	B1, F1, 5dcib, 3dcib, F3, 3dcib, F2, 3dcib, B1, 5dcib, F2, 3dcib, F1, 5dcib, B1, F1, 5dcib, dc		
74B		WH: B2, F1 DG: F2 (cut) LG: F1, B4	WH: F2, B1, F3, B1, F1 LP: F1, B2, F1	DP: F1, B2, F1 WH: F1, B2, F3, B1
75A	F	F1, 5dcif, F1, 3dcif, B2, 5dcif, B1, 3dcif, B1, F1, 5dcif, 5dcif, B3, 7dcif, F1, B1, F1, dc		
75B		WH: F1, B3, F1 DP: B1, F3, B1	LP: B1, F2 WH: (B1, F1)x2, B3	LG: B2, F4 WH: B3, F1, B2, F1
76A	B	B1, F2, B1, 5dcib, F4, 7dcib, F1, B2, 3dcib, F1, 3dcib, F3, (3dcib, F1)x2, B1, dc		
76B		WH: B1, F2, B1, F1 LG: F1, B5, F1	WH: F2, (B1, F1)x2 LP: F2, B1	DP: F1, B4 WH: F2, B1, F3, B1
77A	F	F1, B1, 3dcif, 5dcif, B3, 3dcif, 5dcif, B1, F2, 5dcif, B5, 3dcif, B1, F1, B1, F2, dc		
77B		WH: F2, B2 DP: B2, F4	LP: B2 (cut) WH: B2, F1, B1, F1, B1	LG: B2, F5, B1 WH: B1, F1, B1, F2, B1, F1
78A	B	B1, F3, B1, 5dcib, F5, 3dcib, F1, B2, F1, 7dcib, F4, 7dcib, F1, B1, dc		
78B		WH: B5, F1 LG: F1, B6	WH: F3, (B1, F1)x2 DP: F2, B5, F1	WH: F4, B1
79A	F	F1, B1, 5dcif, B5, 5dcif, B1, F2, B1, 5dcif, B5, 3dcif, F2, (B1, F1)x2, dc		
79B		WH: F2 DP: B2, F5, B1	WH: B2, F1, (B1, F1)x2 LG: B2, F6	WH: B1, F2, B2, F3
80A	B	B1, F4, B1, 3dcib, F6, 3dcib, B1, F1, B2, F1, 5dcib, F5, 3dcib, F1, B1, dc		
80B		WH: F1, B2, F2, B1 LG: F1, B7	WH: F2, (B1, F1)x3 DP: F1, B6	WH: F3, B1
81A	F	F1, 5dcif, B5, 3dcif, B1, F1, B1, F2, B1, 3dcif, B6, 3dcif, F1, B1, F1, B1, F2, dc		
81B		WH: F1 DP: B2, F6	WH: (B1, F1)x4 LG: B1, F6, B1	WH: B2, F2, B1, F3
82A	B	B3, F3, 5dcib, F5, 3dcib, B1, F1, B2, F1, B1, 3dcib, F6, 3dcib, B1, dc		
82B		WH: F1, B5, F1 LG: F1, B6	WH: F2, (B1, F1)x3 DP: F1, B7	WH: F2, B1
83A	F	F1, 3dcif, B6, 3dcif, B1, F2, B1, F1, 5dcif, B5, 3dcif, F1, (B1, F1)x3, dc		
83B		WH: F1 DP: B1, F7	WH: (B1, F1)x3, B1 LG: B2, F6	WH: B1, F1, B2, F2, B2, F1
84A	B	B1, F1, B1, F4, 3dcib, F6, 3dcib, F1, B2, F1, B1, 3dcib, F6, 3dcib, B1, dc		
84B		WH: B2, F1, B2, F2 LG: F1, B7	WH: F1, (B1, F1)x3 DP: F2, B6	WH: F2, B1

85A	F	5dcif, B5, 5dcif, B1, F2, B1, F1, 3dcif, B6, 3dcif, (B1, F1)x2, B2, F1, dc		
85B		DP: B2, F6	WH: B2, F1, (B1, F1)x2, B1	LG: B1, F7 WH: B1, F2, B1, F5
86A	B	B2, F1, B2, F2, 3dcib, F6, 3dcib, F1, B2, F1, B1, F1, 3dcib, F6, 3dcib, dc		
86B		WH: B1, F2, B4 LG: F1, B7	WH: F1, (B1, F1)x3, B1 DP: F1, B7	WH: F1, B1
87A	F	3dcif, B6, 3dcif, F1, B1, F2, B1, F1, 3dcif, B6, 3dcif, F1, B1, F1, B3, F1, dc		
87B		DP: B1, F7	WH: B2, F1, (B1, F1)x2, B1	LG: B1, F7 WH: B2, F2, B2, F3
88A	B	(B1, F1)x2, B1, F2, 3dcib, F6, 3dcib, F1, B2, F1, B1, F1, 3dcib, F6, 3dcib, dc		
88B		WH: F2, B2, F1, B2 LG: F1, B7	WH: F1, (B1, F1)x3, B1 DP: F1, B7	WH: F1, B1
89A	F	3dcif, B6, 3dcif, F1, B1, F2, B1, F1, 3dcif, B6, 3dcif, B1, F1, B3, 3dcif, dc		
89B		DP: B1, F7	WH: B2, F1, (B1, F1)x2, B1	LG: B1, F6, B1 WH: B2, F5, B1, F1
90A	B	3dcib, F1, B1, F1, B1, 7dcib, F5, 3dcib, F1, B2, F1, B1, F1, 3dcib, F6, 3dcib, dc		
90B		WH: F2, B1, F2, B1 DG (new): F2	LG: F1, B5, F1 WH: F3, (B1, F1)x2, B1	DP: F1, B7 WH: F1, B1
91A	F	3dcif, B6, 3dcif, F1, B1, F2, B1, 7dcib, B4, 3dcif, 3dcif, B3, 5dcif, dc		
91B		DP: B1, F6, B1 WH: B2, F1, (B1, F1)x2, B2	LG: B1, F4, B1 DG: B1, F1	WH: B3, F2, B2, F1
92A	B	B1, 3dcib, F1, B1, F1, 3dcib, 5dcib, F3, 3dcib, 3dcib, B1, F1, B2, 7dcib, F5, 3dcib, dc		
92B		WH: (B1, F1)x2, B2 DG: F1, B1, F1 LG: F1, B4	WH: F1, B1, F2, (B1, F1)x2 LP (new): F2	DP: F1, B5, F1 WH: F1, B1
93A	F	5dcif, B4, 3dcif, 3dcif, B1, F2, 5dcif, 3dcif, B3, 3dcif, B1, 3dcif, B2, F1, 3dcif, F1, dc		
93B		WH: B1 DP: B1, F4, B1 LP: B1, F1	WH: (B1, F1)x2, B4 LG: B1, F4	DG: B1, F2 WH: B2, F2, B3, F1
94A	B	B1, (5dcib, F1)x2, 3dcib, F3, (3dcib, F1)x2, B2, 3dcib, 5dcib, F3, 3dcib, B1, dc		
94B		WH: B1, F2, B2 DG: F2, B2 LG: F2, B2, F1	WH: F1, B2, F1, (B1, F1)x2 LP: F1, B1, F1	DP: F1, B4 WH: F1, B2
95A	F	F1, 3dcif, B3, 3dcif, B1, 3dcif, B1, F2, 3dcif, (B1, 5dcif)x2, B2, 3dcif, B1, 3dcif, B1, F1, dc		
95B		WH: F1 DP: B1, F4 LP: B1, F2	WH: B3, F1, B5 LG: B1, F2	DG: B2, F3 WH: B2, F1, B3, F1
96A	B	B1, F1, 3dcib, 5dcib, F3, 3dcib, F1, 3dcib, F2, 5dcib, B1, 5dcib, F1, 3dcib, F3, 3dcib, B1, dc		
96B		WH: B2, F2 DG: F2, B4 LG: F1, B1, F1	WH: F2, B1, F4, B1 LP: F2, B2	DP: F2, B2, F1 WH: F1, B2
97A	F	F1, 5dcif, B1, 5dcif, B2, 3dcif, F1, 3dcif, B1, F2, 5dcif, 3dcif, B4, 7dcib, B1, F1, dc		
97B		WH: F1, B1 DP: B1, F2 LP: B2, F3	WH: B2, F1, B1, F4, B1 LG: B2 (cut)	DG: B1, F5, B1 WH: B4, F1
98A	B	B1, F1, 5dcib, F5, 7dcib, F1, B2, F1, 3dcib, 5dcib, F3, 3dcib, F1, 3dcib, B2, dc		
98B		WH: B2 DG: F2, B6	WH: F5, B1, F4 LP: F2, B4	DP: F1, B1, F1 WH: F1, B3
99A	F	F2, 5dcif, 3dcif, B4, 7dcib, B5, 5dcif, B6, 3dcif, B1, F1, dc		
99B		WH: F2, B1 DP: B2 (cut)	LP: B1, F5, B1 WH: B3, F1, B2, F1, B2	DG: B1, F7 WH: B3, F1
100A	B	B1, 5dcib, F6, 3dcib, F1, B2, F1, B2, 5dcib, F5, 7dcib, B3, dc		
100B		WH: B1 DG: F2, B6, F1	WH: F1, B7 LP: F2, B6	WH: F3, B4

101A	F	F4, 5dcif, B6, 3dcif, F2, B1, F2, B1, 5dcif, B6, 3dcif, F1, dc		
101B		WH: F4, B1 LP: B1, F7	WH: (B2, F1)x2, B3 DG: B1, F7	WH: B2, F1
102A	B	B1, (3dcib, F6)x2, 5dcib, F6, 3dcib, B5, dc		
102B		WH: B1 DG: F1, B7	WH: F2, (B1, F2)x2 LP: F2, B6, F1	WH: F1, B6
103A	F	F5, 5dcif, B6, 3dcif, (B1, F2)x2, 3dcif, B6, 3dcif, F1, dc		
103B		WH: F5, B1 LP: B1, F7	WH: B1, F7 DG: B1, F7	WH: B2, F1
104A	B	5dcib, F6, 3dcib, (B2, F1)x2, 3dcib, F6, 3dcib, B6, dc		
104B		DG: F2, B6, F1 WH: F2, (B1, F2)x2	LP: F1, B7	WH: F1, B7
105A	F	F6, 3dcif, B6, 3dcif, B6, 5dcif, B6, 3dcif, dc		
105B		WH: F6 LP: B1, F7	WH: (B2, F1)x2, B3 DG: B1, F7	WH: B1, F1
106A	B	3dcib, F6, 3dcib, B1, F1, B2, F1, B1, 5dcib, F6, 3dcib, B6, dc		
106B		DG: F1, B7 WH: F1, B7	LP: F2, B6, F1	WH: F1, B7
107A	F	F6, 5dcif, B6, 3dcif, F1, B1, F2, B1, F1, 3dcif, B6, 3dcif, dc		
107B		WH: F6, B1 LP: B1, F7	WH: B1, F1, (B2, F1)x2 DG: B1, F7	WH: B1, F1
108A	B	(3dcib, F6)x3, 3dcib, B7, dc		
108B		DG: F1, B7 WH: F2, (B1, F2)x2	LP: F1, B7	WH: F1, B8
109A	F	F7, 3dcif, B6, 3dcif, (B1, F2)x2, 3dcif, B6, 3dcif, dc		
109B		WH: F7 LP: B1, F7	WH: B1, F7 DG: B1, F7	WH: B1, F1
110A	B	3dcib, F6, 3dcib, (B2, F1)x2, 3dcib, F6, 3dcib, B7, dc		
110B		DG: F1, B7 WH: F2, (B1, F2)x2	LP: F1, B7	WH: F1, B8
111A	F	F7, 3dcif, (B6, 3dcif,)x3, dc		
111B		WH: F7 LP: B1, F7	WH: (B2, F1)x2, B2 DG: B1, F6, B1	WH: B1, F1
112A	B	5dcib, F5, 3dcib, F1, B2, F1, B2, 3dcib, F6, 3dcib, B7, dc		
112B		WH: F1 DG: F1, B5, F1	WH: F2, B6 LP: F1, B7	WH: F1, B8
113A	F	F7, 3dcif, B6, 3dcif, F2, B1, F2, 7dcif, B4, 3dcif, F1, dc		
113B		WH: F7 LP: B1, F6, B1	WH: (B2, F1)x2, B1 LG (new): B2	DG: B1, F5 WH: B1, F2
114A	B	B1, 3dcib, F4, 3dcib, 3dcib, F4, 7dcib, F5, 3dcib, B7, dc		
114B		WH: F1 DG: F1, B4, F1	LG: F1, B1 WH: F3, B1, F4	LP: F1, B5, F1 WH: F2, B7
115A	F	F6, 7dcif, B4, 3dcif, 3dcif, B1, F2, B1, 3dcif, 5dcif, B3, 3dcif, F1, dc		
115B		WH: B1, F5 DP (new): B2 LP: B1, F5	WH: B1, F1, B2, F4 LG: B1, F1, B1	DG: B1, F3, B1 WH: B1, F2
116A	B	B1, 5dcib, F2, (3dcib, F1)x2, B2, 5dcib, 3dcib, F4, 3dcib, 3dcib, B4, 3dcib, dc		
116B		WH: F2 DG: F1, B2, F1 LG: F1, B2	WH: F3, B1, F3, B1 LP: F1, B4, F1	DP: F1, B1 WH: F1, B5, F1, B1
117A	F	3dcif, F4, 3dcif, 5dcif, B3, 3dcif, F1, 3dcif, B2, 5dcif, B1, 5dcif, B1, 3dcif, F2, dc		
117B		WH: B2, F4 DP: B1, F1, B1 LP: B1, F3, B1	WH: B1, F2, B4 LG: B2, F2, B1	DG: B1, F1, B1 WH: B1, F3

118A	B	B2, 5dcib, 3dcib, F3, 3dcib, F1, 5dcib, F1, 5dcib, F2, 3dcib, F1, 3dcib, B3, 5dcib, dc		
118B		WH: B1, F2 DG: F1, B1 LG: F1, B4	WH: F2, B1, F2, B2, F1 LP: F1, B2, F1	DP: F1, B2 WH: F2, B3, F2, B1
119A	F	F1, 3dcif, F2, 5dcif, B1, 5dcif, B1, 3dcif, B1, F1, B1, 3dcif, 5dcif, B3, 3dcif, 3dcif, B2, F1, dc		
119B		WH: F1, B2, F2 DP: B2, F2, B1 LP: B1, F1, B1	WH: B1, F4, B2 LG: B2, F4	DG: B2 (cut) WH: B1, F1, B2, F1
120A	B	B1, F1, B1, 7dcib, F4, 7dcib, B1, F1, B1, 5dcib, 3dcib, F3, 3dcib, B1, 5dcib, B1, dc		
120B		WH: F1, B2, F2 LG: F1, B5, F1	WH: F2, B4, F1 LP: F2 (cut)	DP: F1, B4 WH: F2, B1, F3, B1
121A	F	F1, B1, 3dcif, 5dcif, B3, 7dcif, F1, B1, F1, B1, 5dcif, B5, 3dcif, B2, F3, dc		
121B		WH: F2, B2 DP: B2, F4	WH: B3, F5 LG: B2, F5, B1	WH: B1, F1, B2, F3
122A	B	B2, F2, B1, 5dcib, F5, 3dcib, (B1, F1)x2, B1, 5dcib, F4, 7dcib, F1, B1, dc		
122B		WH: B1, F2, B2, F1 LG: F1, B6	WH: F2, B5, F1 DP: F1, B5, F1	WH: F4, B1
123A	F	F1, B1, 5dcif, B5, 3dcif, F1, (B1, F1)x2, 5dcif, B5, 3dcif, B1, F2, B2, F1, dc		
123B		WH: F2 DP: B2, F5, B1	WH: B1, F6 LG: B2, F6	WH: B3, F2, B2, F1
124A	B	B1, F1, B2, F2, 3dcib, F6, 3dcib, F1, (B1, F1)x2, 5dcib, F5, 3dcib, F1, B1, dc		
124B		WH: F1, B2, F2, B1 LG: F1, B7	WH: F1, B6, F1 DP: F1, B6	WH: F3, B1
125A	F	F1, 5dcif, B5, 3dcif, (B1, F1)x3, 3dcif, B6, 3dcif, F1, B2, F3, dc		
125B		WH: F1 DP: B2, F6	WH: B1, F7 LG: B1, F6, B1	WH: B1, F2, B2, F3
126A	B	B2, F2, B2, 5dcib, F5, 3dcib, F1, (B1, F1)x2, B1, 3dcib, F6, 3dcib, B1, dc		
126B		WH: B1, F2, B2, F2 LG: F1, B6	WH: F2, B6 DP: F1, B7	WH: F2, B1
127A	F	F1, 3dcif, B6, 3dcif, (B1, F1)x2, B1, 5dcif, B5, 3dcif, B2, F2, B2, F1, dc		
127B		WH: F1 DP: B1, F6, B1	WH: B1, F6 LG: B2, F6	WH: B1, F1, B2, F2, B2, F1
128A	B	B1, F1, B2, F2, B1, 3dcib, F6, 3dcib, (B1, F1)x2, B1, 5dcib, F5, 3dcib, B1, dc		
128B		WH: F1, B2, F2, B2 LG: F1, B7	WH: F1, B6, F1 DP: F1, B6	WH: F2, B1
129A	F	5dcif, B5, 3dcif, F1, (B1, F1)x2, B1, 3dcif, B6, 3dcif, F2, B2, F3, dc		
129B		DP: B2, F6 WH: B1, F7	LG: B1, F7	WH: B2, F2, B2, F3
130A	B	B2, F2, B2, F1, 3dcib, F6, 3dcib, (B1, F1)x3, 3dcib, F6, 3dcib, dc		
130B		WH: B1, F2, B2, F2 LG: F1, B7	WH: F1, B7 DP: F1, B7	WH: F1, B1
131A	F	3dcif, B6, 3dcif, F1, (B1, F1)x2, B1, 3dcif, B6, 3dcif, B2, F2, B2, F1, dc		
131B		DP: B1, F7 WH: B1, F7	LG: B1, F7	WH: B1, F1, B2, F2, B2, F1
132A	B	B1, F1, B2, F2, B1, 3dcib, F6, 3dcib, (B1, F1)x3, 3dcib, F6, 3dcib, dc		
132B		WH: F1, B2, F2, B2 LG: F1, B7	WH: F1, B7 DP: F1, B7	WH: F1, B1
133A	F	3dcif, B6, 3dcif, F1, (B1, F1)x2, B1, 3dcif, B6, 3dcif, F2, B2, F1, 3dcif, dc		
133B		DP: B1, F7 WH: B1, F7	LG: B1, F6, B1	WH: B2, F2, B2, F1, B1, F1
134A	B	3dcib, F2, B2, 7dcib, F5, 3dcib, (B1, F1)x3, 3dcib, F6, 3dcib, dc		
134B		WH: F3, B2, F1 DG (new): F2	LG: F1, B5, F1 WH: F2, B6	DP: F1, B7 WH: F1, B1
135A	F	3dcif, B6, 3dcif, F1, (B1, F1)x2, 7dcif, B4, 3dcif, 3dcif, B1, F2, 5dcif, dc		

135B		DP: B1, F6, B1 WH: B2, F5, B2	LG: B1, F4, B1 DG: B1, F1	WH: B3, F2, B2, F1
136A	B	B1, 3dcib, B1, F2, 3dcib, 5dcib, F3, 3dcib, 3dcib, F1, B1, F1, B1, 7dcib, F5, 3dcib, dc		
136B		WH: B1, F1, B1, F2, B1 DG: F1, B1, F1 LG: F1, B4	WH: F1, B1, F2, B4 LP (new): F2	DP: F1, B5, F1 WH: F1, B1
137A	F	5dcif, B4, 3dcif, 3dcif, B1, F1, B1, 5dcif, 3dcif, B3, 3dcif, B1, 3dcif, F1, B2, 3dcif, F1, dc		
137B		WH: B1 DP: B1, F4, B1 LP: B1, F1	WH: B1, F4, B2, F1 LG: B1, F4	DG: B1, F2 WH: B2, F1, B4, F1
138A	B	(B1, 5dcib)x2, F1, 3dcib, F3, (3dcib, B1)x2, F1, B1, 3dcib, 5dcib, F3, 3dcib, B1, dc		
138B		WH: B1, F2, B2 DG: F2, B2 LG: F2, B2, F1	WH: F2, B1, F1, B4 LP: F1, B1, F1	DP: F1, B4 WH: F1, B2
139A	F	F1, 3dcif, B3, 3dcif, B1, 3dcif, B1, F1, B1, 3dcif, F1, 5dcif, B1, 5dcif, B2, 3dcif, F1, 3dcif, B1, F1, dc		
139B		WH: B1 DP: B1, F4 LP: B1, F2	WH: B2, F2, B3, F1, B1 LG: B1, F2	DG: B2, F3 WH: B2, F1, B3, F1
140A	B	B1, F1, 3dcib, 5dcib, F3, (3dcib, F1)x2, B1, (5dcib, F1)x2, 3dcib, F3, 3dcib, B1, dc		
140B		WH: B2, F2 DG: F2, B4 LG: F1, B2	WH: F1, B1, F1, B1, F2, B2 LP: F2, B2	DP: F2, B2, F1 WH: F1, B2
141A	F	F1, 5dcif, B1, 5dcif, B2, 3dcif, F1, 3dcif, B1, F2, 3dcif, B1, 3dcif, B4, 7dcif, B1, F1, dc		
141B		WH: B2 DP: B1, F2 LP: B2, F3	WH: B2, F1, (B1, F1)x2, B1 LG: B2, F1	DG: B1, F5, B1 WH: B4, F1
142A	B	B1, F1, 5dcib, F5, 3dcib, 5dcib, F1, B2, 3dcib, 5dcib, F3, (3dcib, F1)x2, B1, dc		
142B		WH: B2 DG: F2, B6 LG: F2 (cut)	WH: F2, B1, F1, B1, F3 LP: F2, B4	DP: F1, B1, F1 WH: F1, B3
143A	F	F1, B1, 5dcif, 3dcif, B4, 7dcif, B1, F2, B1, 7dcif, B6, 3dcif, B1, F1, dc		
143B		WH: B3 DP: B1, F1	LP: B1, F5, B1 WH: B2, F1, (B1, F1)x2, B1	DG: B2, F7 WH: B3, F1
144A	B	B1, 5dcib, F6, 5dcib, F1, B2, F1, B1, 5dcib, F5, 3dcib, 3dcib, F1, B2, dc		
144B		WH: B1 DG: F2, B6, F1	WH: F2, (B1, F1)x3 LP: F2, B6	DP: F2 (cut) WH: F1, B4
145A	F	F2, B1, 7dcif, B6, 3dcif, B1, F2, B1, F1, B1, 5dcif, B6, 3dcif, F1, dc		
145B		WH: B5 LP: B1, F7	WH: B3, F1, (B1, F1)x2, B1	DG: B1, F7 WH: B2, F1
146A	B	B1, 3dcib, F6, 3dcib, F1, B1, F1, B2, F1, 5dcib, F6, 3dcib, (B1, F1)x2, B1, dc		
146B		WH: B1 DG: F1, B7	WH: F1, (B1, F1)x3, B1 LP: F2, B6, F1	WH: F1, B6
147A	F	F1, (B1, F1)x2, 5dcif, B6, 3dcif, F1, B1, F2, B1, F1, 3dcif, B6, 3dcif, F1, dc		
147B		WH: B6 LP: B1, F7	WH: B2, F1, (B1, F1)x2, B1	DG: B1, F7 WH: B2, F1
148A	B	5dcib, F6, 3dcib, F1, B1, F1, B2, F1, 3dcib, F6, 3dcib, (B1, F1)x2, B2, dc		
148B		DG: F2, B7 WH: F1, (B1, F1)x3, B1	LP: F1, B7	WH: F1, B7
149A	F	F2, (B1, F1)x2, 3dcif, B6, 3dcif, F1, B1, F2, B1, F1, 3dcif, B7, 3dcif, dc		
149B		WH: B6 LP: B1, F7	WH: B2, F1, (B1, F1)x2, B1	DG: B2, F7 WH: B1, F1
150A	B	3dcib, F6, 5dcib, F1, B2, F1, B1, 5dcib, F6, 3dcib, F1, (B1, F1)x2, B1, dc		
150B		DG: F1, B7	LP: F2, B6, F1	WH: F1, B7

		WH: F2, (B1, F1)x3		
151A	F	F1, (B1, F1)x2, B1, 5dcif, B6, 3dcif, B1, F2, B1, F1, B1, 3dcif, B6, 3dcif, dc		
151B		WH: B7 LP: B1, F7	WH: (B1, F1)x4 DG: B1, F7	WH: B1, F1
152A	B	3dcib, F6, 3dcib, B1, F1, B2, F1, B1, 3dcib, F6, 3dcib, F1, (B1, F1)x2, B2, dc		
152B		DG: F1, B7 WH: F2, (B1, F1)x3	LP: F1, B7	WH: F1, B8
153A	F	F2, (B1, F1)x2, B1, 3dcif, B6, 3dcif, B1, F2, B1, F1, B1, 3dcif, B6, 3dcif, dc		
153B		WH: B7 LP: B1, F7	WH: (B1, F1)x4 DG: B1, F7	WH: B1, F1
154A	B	3dcib, F6, 3dcib, B1, F1, B2, F1, B1, 3dcib, F6, 3dcib, (B1, F1)x3, B1, dc		
154B		DG: F1, B7 WH: F2, (B1, F1)x3	LP: F1, B7	WH: F1, B8
155A	F	F1, (B1, F1)x3, 3dcif, B6, 3dcif, B1, F2, B1, F1, B1, 3dcif, B6, 3dcif, dc		
155B		WH: B7 LP: B1, F7	WH: (B1, F1)x4 DG: B1, F6, B1	WH: B1, F1
156A	B	5dcib, F5, 3dcib, B1, F1, B2, F1, B1, 3dcib, F6, 3dcib, F1, (B1, F1)x2, B2, dc		
156B		WH: F1 DG: F1, B5, F1	WH: F2, (B1, F1)x3 LP: F1, B7	WH: F1, B8
157A	F	F2, (B1, F1)x2, B1, 3dcif, B6, 3dcif, B1, F1, B1, F2, 7dcif, B4, 3dcif, F1, dc		
157B		WH: B7 LP: B1, F6, B1	WH: B3, F1, B1, F1, B1 LG (new): B2	DG: B1, F5 WH: B1, F2
158A	B	B1, 3dcib, F4, 3dcib, 3dcib, F1, B2, F1, 7dcib, F5, 5dcib, F1, (B1, F1)x2, B1, dc		
158B		WH: B1 DG: F1, B4, F1	LG: F1, B1 WH: F1, (B1, F1)x2, B1, F2	LP: F1, B5, F1 WH: F2, B7
159A	F	F1, (B1, F1)x2, B1, 7dcif, B4, 3dcif, 3dcif, F1, B1, F2, 3dcif, 5dcif, B3, 3dcif, F1, dc		
159B		WH: B6 DP (new): B2 LP: B1, F5	WH: B1, F1, B2, F1, B1, F1, B1 LG: B1, F1, B1	DG: B1, F3, B1 WH: B1, F2
160A	B	B1, 5dcib, F2, (3dcib, F1)x2, B2, 5dcib, 3dcib, F4, 3dcib, 3dcib, (B1, F1)x2, 3dcib, dc		
160B		WH: B1, F1 DG: F1, B2, F1 LG: F1, B2	WH: F3, B1, F4 LP: F1, B4, F1	DP: F1, B1 WH: F1, B5, F1, B1
161A	F	3dcif, (B1, F1)x2, 3dcif, 5dcif, B3, 3dcif, B1, 3dcif, B1, F1, 5dcif, B1, 5dcif, B1, 3dcif, F2, dc		
161B		WH: B6 DP: B1, F1, B1 LP: B1, F3, B1	WH: B1, F2, B3, F1 LG: B2, F2, B1	DG: B1, F1, B1 WH: B1, F3
162A	B	B2, 5dcib, 3dcib, F3, 3dcib, B1, 5dcib, F1, 5dcib, F2, (3dcib, F1)x2, B1, F1, 5dcib, dc		
162B		WH: B2, F1 DG: F2 (cut) LG: F1, B4	WH: F2, B1, F2, B2, F1 LP: F1, B2, F1	DP: F1, B2 WH: F2, B3, F2, B1
163A	F	F1, 3dcif, B1, F1, 5dcif, B1, 5dcif, B1, 3dcif, B1, F1, B1, 3dcif, 5dcif, B3, 7dcif, F3, dc		
163B		WH: F1, B4 DP: B2, F2, B1	LP: B1, F1, B1 WH: B1, F2, B4	LG: B2, F4 WH: B3, F4
164A	B	B4, 5dcib, F4, 7dcib, F3, 5dcib, 3dcib, F3, 3dcib, F1, 5dcib, B1, dc		
164B		WH: B4, F1 LG: F1, B5, F1	WH: F3, B2, F2 LP: F2 (cut)	DP: F1, B4 WH: F2, B1, F2, B2
165A	F	F2, 3dcif, 5dcif, B3, 7dcif, (B1, F1)x2, 5dcif, B5, 3dcif, F5, dc		
165B		WH: F2, B2 DP: B2, F4	WH: B3, F3, B1, F1 LG: B2, F5, B1	WH: B1, F6
166A	B	B5, 5dcib, F5, 3dcib, F1, B2, F1, B1, 5dcib, F4, 7dcib, B2, dc		
166B		WH: B5, F1 LG: F1, B6	WH: F2, B2, F2, B1, F1 DP: F1, B5, F1	WH: F2, B3
167A	F	F2, 5dcif, B5, 3dcif, B4, F1, 5dcif, B5, 3dcif, F6, dc		

167B		WH: F2 DP: B2, F5, B1	WH: B2, F2, B2, F1 LG: B2, F6	WH: B1, F7
168A	B	B6, 3dcib, F6, 3dcib, (B1, F1)x2, B1, 5dcib, F5, 3dcib, B2, dc		
168B		WH: B6 LG: F1, B7	WH: F2, (B2, F1)x2 DP: F1, B6	WH: F2, B2
169A	F	F1, 5dcif, B5, 3dcif, B1, F2, B3, 3dcif, B6, 3dcif, F6, dc		
169B		WH: F1 DP: B2, F6	WH: B3, F5 LG: B1, F6, B1	WH: B1, F7
170A	B	B6, 5dcib, F5, 3dcib, F1, B1, F1, B1, F2, 3dcib, F6, 3dcib, B1, dc		
170B		WH: B6, F1 LG: F1, B6	WH: F3, B2, F2, B1 DP: F1, B7	WH: F1, B2
171A	F	F1, 3dcif, B6, 3dcif, F1, B1, F1, B2, 5dcif, B5, 3dcif, F7, dc		
171B		WH: F1 DP: B1, F7	WH: B2, F2, B1, F2 LG: B2, F6	WH: B1, F8
172A	B	B7, 3dcib, F6, 3dcib, F1, B1, F3, 3dcib, F6, 3dcib, B1, dc		
172B		WH: B7 LG: F1, B7	WH: F2, B5 DP: F2, B6	WH: F2, B1
173A	F	5dcif, B5, 5dcif, B1, F1, B1, F2, 3dcif, B6, 3dcif, F7, dc		
173B		DP: B2, F6 WH: (B2, F2)x2	LG: B1, F7	WH: B1, F8
174A	B	B7, 3dcib, F6, 3dcib, B1, F4, B1, 3dcib, F6, 3dcib, dc		
174B		WH: B7 LG: F1, B7	WH: F1, B1, F2, B2, F1, B1	DP: F1, B7 WH: F1, B1
175A	F	3dcif, B6, 3dcif, (B1, F1)x3, 3dcif, B6, 3dcif, F7, dc		
175B		DP: B1, F7 WH: B1, F3, B1, F2, B1	LG: B1, F7	WH: B1, F8
176A	B	B7, 3dcib, F6, 3dcib, F3, B2, F1, 3dcib, F6, 3dcib, dc		
176B		WH: F1, B6 LG: F1, B7	WH: F1, B5, F2 DP: F1, B7	WH: F1, B1
177A	F	3dcif, B6, 3dcif, B2, F1, B1, F1, B1, 3dcif, B6, 3dcif, F5, 3dcif, dc		
177B		DP: B1, F7 WH: B1, F1, B2, F2, B2	LG: B1, F6, B1	WH: B2, F5, B1, F1
178A	B	3dcib, B4, 7dcib, F5, 3dcib, F3, B1, F1, B1, 3dcib, F6, 3dcib, dc		
178B		WH: F2, B4 DG (new): F2	LG: F1, B5, F1 WH: F2, (B2, F1)x2	DP: F1, B7 WH: F1, B1
179A	F	3dcif, B6, 3dcif, B3, F1, B1, 7dcif, B4, 3dcif, 3dcif, F3, 5dcif, dc		
179B		DP: B1, F6, B1 WH: B2, F5, B2	LG: B1, F4, B1 DG: B1, F1	WH: B1, F4, B2, F1
180A	B	B1, 3dcib, B3, 3dcib, 5dcib, F3, 3dcib, 3dcib, F1, B1, F1, B1, 7dcib, F5, 3dcib, dc		
180B		WH: B1, F1, B4 DG: F1, B1, F1 LG: F1, B4	WH: F1, (B1, F2)x2, B1 LP (new): F2	DP: F1, B5, F1 WH: F1, B1
181A	F	5dcif, B4, 3dcif, 3dcif, B3, 5dcif, 3dcif, B3, 3dcif, B1, 3dcif, F3, 3dcif, F1, dc		
181B		WH: B1 DP: B1, F4, B1 LP: B1, F1	WH: B1, F2, B5 LG: B1, F4	DG: B1, F2 WH: B2, F2, B3, F1
182A	B	(B1, 5dcib)x2, F1, 3dcib, F3, (3dcib, F1)x2, B1, F1, 3dcib, 5dcib, F3, 3dcib, B1, dc		
182B		WH: B1, F2, B2 DG: F2, B2 LG: F2, B2, F1	WH: F1, (B2, F1)x2, B1 LP: F1, B1, F1	DP: F1, B4 WH: F1, B2
183A	F	F1, 3dcif, B3, 3dcif, B1, 3dcif, F1, B2, 3dcif, (B1, 5dcif)x2, B2, 3dcif, F1, 3dcif, B1, F1, dc		
183B		WH: B1 DP: B1, F4 LP: B1, F2	WH: B2, F2, B5 LG: B1, F2	DG: B2, F3 WH: B2, F1, B3, F1

184A	B	B1, F1, 3dcib, 5dcib, F3, 3dcib, F1, 3dcib, F2, (5dcib, F1)x2, 3dcib, F3, 3dcib, B1, dc		
184B		WH: B2, F2 DG: F2, B4 LG: F1, B1, F1	WH: F2, B1, F3, B2 LP: F2, B2	DP: F2, B2, F1 WH: F1, B2
185A	F	F1, 5dcif, B1, 5dcif, B2, 3dcif, B1, 3dcif, B1, F2, 5dcib, 3dcif, B4, 7dcif, B1, F1, dc		
185B		WH: B2 DP: B1, F2 LP: B2, F3	WH: B2, F1, B1, F4, B1 LG: B2 (cut)	DG: B1, F5, B1 WH: B4, F1
186A	B	B1, F1, 5dcib, F5, 7dcib, F1, B2, F1, 3dcib, 5dcib, F3, 3dcib, F1, 3dcib, B2, dc		
186B		WH: B2 DG: F2, B6	WH: F5, B1, F4 LP: F2, B4	DP: F1, B1, F1 WH: F1, B3
187A	F	F2, 5dcif, 3dcif, B4, 7dcif, B5, 5dcif, B6, 3dcif, B1, F1, dc		
187B		WH: F1, B2 DP: B1, F1	LP: B1, F5, B1 WH: B3, F1, B2, F1, B2	DG: B1, F7 WH: B3, F1
188A	B	B1, 5dcib, F6, 3dcib, F1, B2, F1, B2, 5dcib, F5, 3dcib, 3dcib, F2, B1, dc		
188B		WH: B1 DG: F2, B6, F1	WH: F1, B7 LP: F2, B6	DP: F2 (cut) WH: F1, B1, F2, B1
189A	F	F1, B1, F1, 7dcif, B6, 3dcif, F2, B1, F2, B1, 5dcif, B6, 3dcif, F1, dc		
189B		WH: B1, F2, B2 LP: B1, F7	WH: (B2, F1)x2, B3 DG: B1, F7	WH: B2, F1
190A	B	B1, (3dcib, F6)x2, 5dcib, F6, 3dcib, F2, B3, dc		
190B		WH: B1 DG: F1, B7	WH: F2, (B1, F2)x2 LP: F2, B6, F1	WH: F1, B1, F2, B3
191A	F	F2, B2, F1, 5dcif, B6, 3dcif, (B1, F2)x2, 3dcif, B6, 3dcif, F1, dc		
191B		WH: F1, B2, F2, B1 LP: B1, F7	WH: B1, F7 DG: B1, F7	WH: B2, F1
192A	B	5dcib, F6, 3dcib, (B2, F1)x2, 3dcib, F6, 3dcib, F1, B2, F2, B1, dc		
192B		DG: F2, B6, F1 WH: F2, (B1, F2)x2	LP: F1, B7	WH: F3, B2, F2, B1
193A	F	F1, B1, F2, B2, 3dcif, B6, 3dcif, B6, 5dcif, B6, 3dcif, dc		
193B		WH: B1, F2, B2, F1 LP: B1, F7	WH: (B2, F1)x2, B3 DG: B1, F7	WH: B1, F1
194A	B	3dcib, F6, 3dcib, B1, F1, B2, F1, B1, 5dcib, F6, 3dcib, B1, F2, B3, dc		
194B		DG: F1, B7 WH: F1, B7	LP: F2, B6, F1	WH: F1, B2, F2, B3
195A	F	F2, B2, F2, 5dcif, B6, 3dcif, F1, B1, F2, B1, F1, 3dcif, B6, 3dcif, dc		
195B		WH: F1, B2, F2, B2 LP: B1, F7	WH: B1, F1, (B2, F1)x2 DG: B1, F7	WH: B1, F1
196A	B	(3dcib, F6)x3, 3dcib, F2, B2, F2, B1, dc		
196B		DG: F1, B7 WH: F2, (B1, F2)x2	LP: F1, B7	WH: F1, B1, F2, B2, F2, B1
197A	F	F1, B1, F2, B2, F1, 3dcif, B6, 3dcif, (B1, F2)x2, 3dcif, B6, 3dcif, dc		
197B		WH: B1, F2, B2, F2 LP: B1, F7	WH: B1, F7 DG: B1, F7	WH: B1, F1
198A	B	3dcib, F6, 3dcib, (B2, F1)x2, 3dcib, F6, 3dcib, B2, F2, B3, dc		
198B		DG: F1, B7 WH: F2, (B1, F2)x2	LP: F1, B7	WH: F2, B2, F2, B3
199A	F	F2, B2, F2, B1, 3dcif, (B6, 3dcif)x3, dc		
199B		WH: F1, B2, F2, B2 LP: B1, F7	WH: (B2, F1)x2, B2 DG: B1, F6, B1	WH: B1, F1
200A	B	5dcib, F5, 3dcib, F1, B2, F1, B2, 3dcib, F6, 3dcib, F2, B2, F2, B1, dc		
200B		WH: F1 DG: F1, B5, F1	WH: B2, F6 LP: F1, B7	WH: F1, B1, F2, B2, F2, B1
201A	F	F1, B1, F2, B2, F1, 3dcif, B6, 3dcif, F2, B1, F2, 7dcif, B4, 3dcif, F1, dc		

201B		WH: B1, F2, B2, F2 LP: B1, F6, B1	WH: (B2, F1)x2, B1 LG (new): B2	DG: B1, F5 WH: B1, F2
202A	B	B1, 3dcib, F4, 3dcib, 3dcib, F4, 7dcib, F5, 3dcib, B2, F2, B3, dc		
202B		WH: B1 DG: F1, B4, F1	LG: F1, B1 WH: F3, B1, F4	LP: F1, B5, F1 WH: F2, B2, F2, B3
203A	F	F2, B2, F2, 7dcif, B4, 3dcif, 3dcif, B1, F2, B1, 3dcif, 5dcif, B3, 3dcif, F1, dc		
203B		WH: B3, F2, B1 DP (new): B2 LP: B1, F5	WH: B1, F1, B2, F4 LG: B1, F1, B1	DG: B1, F3, B1 WH: B1, F2
204A	B	B1, 5dcib, F2, (3dcib, F1)x2, B2, 5dcib, 3dcib, F4, 3dcib, 3dcib, F1, B2, F1, 3dcib, dc		
204B		WH: B1, F1 DG: F1, B2, F1 LG: F1, B2	WH: F3, B1, F4 LP: F1, B4, F1	DP: F1, B1 WH: F3, B2, F2, B1
205A	F	5dcif, F1, B2, 3dcif, 5dcif, B3, 3dcif, B1, 3dcif, B2, 5dcif, B1, 5dcif, B1, 3dcif, F2, dc		
205B		WH: (B2, F1)x2 DP: B1, F1, B1 LP: B1, F3, B1	WH: B1, F2, B4 LG: B2, F2, B1	DG: B1, F1, B1 WH: B1, F3
206A	B	B1, F1, 5dcib, 3dcib, F3, 3dcib, F1, 5dcib, F1, 5dcib, F2, 3dcib, F1, 3dcib, B1, F2, 3dcib, B1, dc		
206B		WH: B2, F1 DG: F2 (cut) LG: F1, B4	WH: F2, B1, F5 LP: F1, B2, F1	DP: F1, B2 WH: F2, B1, F3, B2
207A	F	F1, 3dcif, B1, F1, 5dcif, B1, 5dcif, B1, 3dcif, B1, F1, B1, 3dcif, 5dcif, B3, 7dcif, B1, F2, dc		
207B		WH: F1, B2, F2 DP: B2, F2, B1	LP: B1, F1, B1 WH: B1, F4, B2	LG: B2, F4 WH: B3, F4
208A	B	(B1, F1)x2, 5dcib, F4, 7dcib, F1, B1, F1, 5dcib, 3dcib, F3, 3dcib, B1, 5dcib, B1, dc		
208B		WH: B4, F1 LG: F1, B5, F1	WH: F7 LP: F1, B1	DP: F1, B4 WH: F2, B1, F4, B2
209A	F	F2, 3dcif, 5dcif, B3, 3dcif, 3dcif, (B1, F1)x2, 5dcif, B5, 3dcif, B1, F1, B1, F2, dc		
209B		WH: F2, B2 DP: B2, F4	LP: B2 (cut) WH: B1, F5	LG: B2, F5, B1 WH: B1, F6
210A	B	(B1, F1)x2, B1, 5dcib, F5, 3dcib, (B1, F1)x2, 7dcib, F4, 7dcib, B2, dc		
210B		WH: F6 (cut) LG: F8 (cut)	WH: F7 (cut) DP: F8 (cut)	WH: F3, B1 (do not cut off white, you can continue with border after 211A! First sc of border is a chain 1)
211A	X	B33, dc (do not cut off and continue with border after colour B border! First hdc of border is a chain 2)		

The extra information on the technique

The Trellis foundation:

A trellis is the first series of dc stitches (with ch1 space in between), and the spaces are called “windows”, which are usually squared. The foundation consists of two colours, basically the trellis in colour A, and the required foundation for colour B.

The way to approach the colour B foundation is always specified for each work. How you work this colour B foundation will result in what kind of pattern you have. Sometimes you just lay the chain of colour B on top of the colour A trellis and work from the back or from the front, other times you have to weave the chain of colour B through the windows of the colour A trellis to have a different effect.

At the end of this information you have a guide on three of the different ways to start a project.

The two colours:

The colour A is the colour of both edges of your work. Rows of colour A always start with a ch3 and end in a dc. The colour B is always one window shorter than the A colour, and therefore it is always “framed” within colour A.

Working the rows:

Every row is worked twice. First the colour A, and then the colour B. Therefore, the pattern has for example row 5A and 5B. Please note that all colour A stitches will be made on colour A, and the same for colour B. Never in interlocking crochet do you make one colour stitch on another colour stitch.

Rows are worked back and forth, so you will have the front side and the back side facing you alternatively. At the beginning of each row follow the pattern on where the colour B should “hang”, whether to the front or to the back of your work.

The stitches:

Interlocking filet uses very simple stitches. The whole concept is 1dc – 1ch – skip 1. However, the key is how that dc is made, either from the front (dcif) or from the back (dcib) of the work. It is this that will bring colours front or send them to the back creating the pattern.

Double crochet in back (also called back stitch)

Working with colour A, and when your colour A mesh is IN FRONT, yarn over, place the hook behind the colour B mesh, and putting the hook through the colour B mesh window, insert the hook from front to back into the top 2 loops of the colour A dc of the previous row. Pull the 2 loops of colour A through the colour B mesh window and to the BACK of the work, and finish the double crochet (yarn over and pull through 2, yarn over and pull through last 2 loops)

Working with colour A, and when your colour A mesh is BEHIND, it is a pretty straight forward dc.

Double crochet in front (also called front stitch)




Working with colour A, and when your colour A mesh is BEHIND, yarn over, place the hook in front of the colour B mesh and putting the hook through the colour B mesh window, insert the hook from front to back into the top 2 loops of the colour A dc of the previous row. Pull the 2 loops of colour A through the colour B mesh window and to the FRONT of the work, and finish the double crochet (yarn over and pull through 2, yarn over and pull through last 2 loops)





Working with colour A, and when your colour A mesh is IN FRONT, it is a straightforward dc.



The trellis photo guide: how to start the project

The trellis is the name (one of the names) for the start of a project. It consists of one row of A colour, to which a row of B colour is added. There are many different variations, the difference may lie in how many dc's are made on a row in the back or front, or how many windows you skip if one is requested to weave the B chain through the A trellis. I will focus here on the way to start this specific blanket.

The blanket is started by laying B chain on A trellis without weaving, most stitches in back, last in front (I used a smaller example here to make it easier):

1A		Chain 44, start in 6 th ch from the hook: (dc1, ch1, sk1) x 19 times, dc in the last chain, you should have 20 windows.
1B		Chain 42, lay your chain over the trellis and starting in the second A window through the 6 th chain from the hook: B18, F1
		<p>1. You first make a chain with the A colour</p>
		<p>2. In the 6th chain from the hook, make a dc and chain 1.</p>
		<p>3. Skip a chain and make another dc and chain 1. Repeat this throughout the chain...</p>

	<p>4. ...until you reach your first chain with your last dc. You should count that you have the 20 windows needed.</p>
	<p>5. With colour B, make the chain as requested.</p>
	<p>6. Yarn over, and send your hook through the 2nd A window from back to front to “fetch” the B chain through the 6th chain from hook...</p>
	<p>7. ...and once you have the 6th chain in your hook, you “pull it back” gently to finish your dc...</p>

	<p>8. ...and you have now made a “B1” or dcib (dc in the back).</p>
	<p>9. Continue making dcib throughout...</p>
	<p>10. ... until you have one stitch left.</p>
	<p>11. The last stitch is in the front, so yarn over, and through the FRONT of your work, catch the last chain and make your last dc.</p>
	<p>12. And you made it! Ready for next row. (Rows start with chain 3, I have the habit of making those 3 chains at the end of the previous row)</p>

END OF DOCUMENT