

# Astrid's 2 potholders



## The technique

These potholders are made in crochet, the technique is Interlocking Crochet. Basically, two filet/mesh crochet parts of double crochet – chain one which are interlinked to form a pattern or drawing. Each row is worked first on one colour and then with the next before the work is turned around. There is a separate file with more information on the technique if needed.

## The size

The finished potholders measure approximately 22 x 25 cm. If you want it in a larger size, using a thicker yarn and a larger needle would be the solution.

## The yarn

One potholder takes approximately 65grams. The colour A is the one used in the border and the pattern (approx. 35gr) and the colour B is the one used in the background (30gr).

I used Scheepjes Catona, 100% cotton mercerized, fingering weight, 125metres per 50gr, and used a 3,0mm hook though the suggested hook for this yarn is 3,5mm.

## The stitches

(US terminology)

ch	Chain	The pattern is abbreviated to make it simple to read. It consists of B's and F's with a number next to it. To the right is the explanation of the abbreviations.		
sk	Skip		B1	dcib, ch1
dc	Double crochet		B3	(dcib, ch1)x3 times
dcib	Double crochet in the back		F1	dcif, ch1
dcif	Double crochet in the front		F2	(dcif, ch1) twice
sc	Single crochet			
hdc	Half double crochet			

## The questions

Feel free to contact me if you have any questions. You can reach me at [aschandy@yahoo.no](mailto:aschandy@yahoo.no) via email or you can join my Facebook group "Astrid's Interlocking crochet lab". You find my work also in Instagram at [ati\\_stitches](#).

## The chart

A chart is included (with a photo) at the beginning of each pattern table for those who prefer to crochet from a picture. Also it is good to compare to make sure it is looking as it should.

## The pattern

The table with the pattern has grey rows for all A rows, hopefully it is easier to read.

When you are working on even numbered rows, you are working with the back of the blanket facing you. It may help to know that when working on even rows, you are following the drawing from left to right.

When you are working on odd numbered rows, you are working with the front of the blanket facing you. When working on odd rows, you are following the drawing from right to left.

All rows should start with ch4, and at the beginning of each row, pay attention to where the B colour should hang, either to the front or the back, as this will affect the drawing/pattern. This is marked in the second column of the pattern. Also, at the end of all B rows, the very last stitch is not followed by a chain 1.

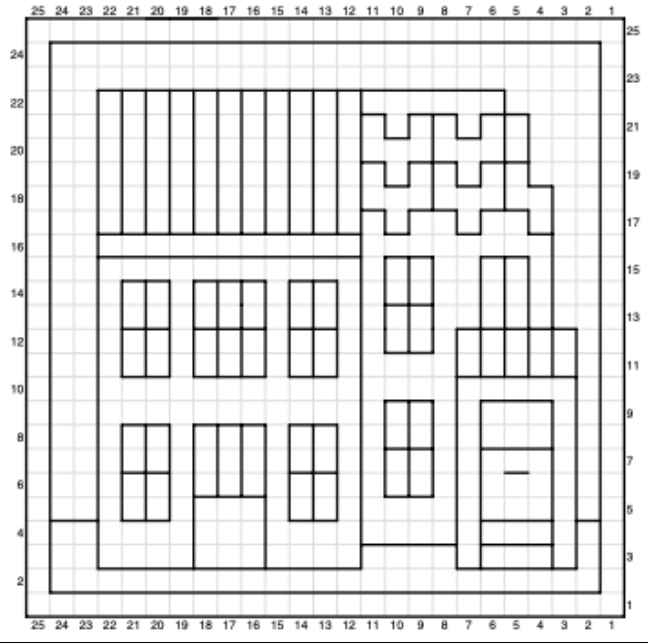
## The border

The border, as the rest of the potholder, is done one in each colour. First colour B:

With colour B: on colour B windows, 2sc in every window, 5sc in each corner.

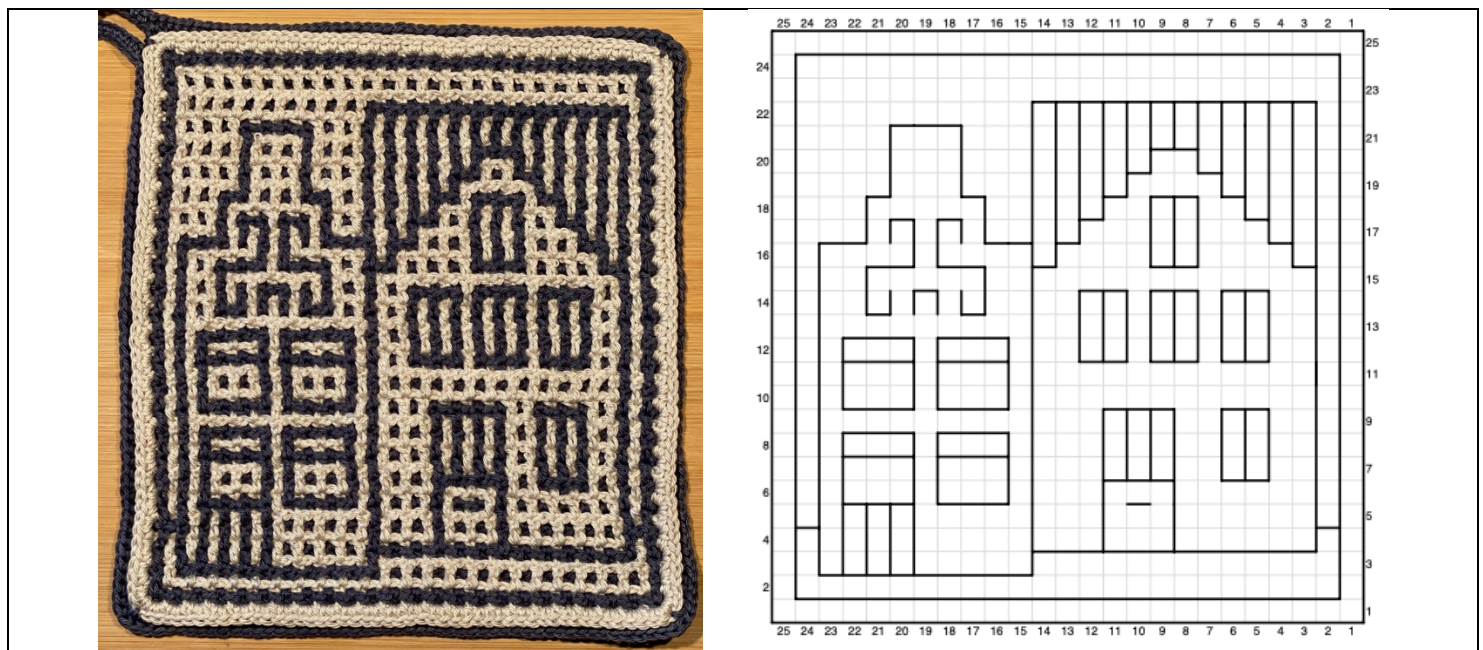
With colour A: on colour A windows, start with chain 25 for your loop, and slip stitch into the same corner window. Make 2 hdc in the first window. Continue all around with 2 hdc in every window. The first three corners: 2hdc, 1hdc grabbing the middle (3<sup>rd</sup>) sc of the colour B window, 2 hdc. When you reach the end of the round, 2hdc in the last window, and 25 sc on the 25 chains of the loop. Join to the first hdc with an invisible join, and cut a bit longer than usual. When you thread a needle to "hide" the last thread, stitch twice on the 3<sup>rd</sup> sc (colour B) of this last corner to fasten it to the A colour, as the other three corners.

Hope you enjoy this!



<b>Astrid's Potholder #4</b>		
Row nr	B color	
1A		Chain 54, start in 6 <sup>th</sup> ch from the hook: (dc1, ch1, sk1) x 24 times, dc in the last chain, you should have 25 windows.
1B		Chain 52, lay your chain over the trellis and on 6 <sup>th</sup> ch from the hook and through 2 <sup>nd</sup> colour A window: B23, F1
2A	B	B1, F22, B1, dc
2B		B2, F11, B4, F5, B2
3A	F	F3, B2, F2, (B3, F1)x2, B2, F1, B3, F1, B1, F1, dc
3B		F2, B3, F1, B4, F14
4A	B	B1, F1, B1, F3, B1, F2, (B1, F3)x2, B2, F2, B3, dc
4B		F2, B1, F2, B5, F2, B6, F3, B1, F1, B1
5A	F	F3, B2, F2, B3, F5, B2, F5, B1, F1, dc
5B		F7, B2, F5, B3, F7
6A	B	B1, F1, B17, F2, B3, dc
6B		B3, F2, B5, F2, B7, F1, B4
7A	F	F3, B2, F17, B1, F1, dc
7B		F2, B3, F2, B2, F15
8A	B	B1, F1, B17, F2, B3, dc
8B		B3, F2, B1, F3, B1, F2, B12
9A	F	F3, B2, F6, B10, F1, B1, F1, dc
9B		F2, B3, F2, B2, F15
10A	B	B1, F1, B1, F10, B1, F3, B1, F4, B2, dc
10B		B3, F2, B1, F3, B1, F2, B5, F5, B2
11A	F	F7, B3, F12, B1, F1, dc
11B		F7, B2, F15
12A	B	B1, F1, B22, dc
12B		B3, F2, B1, F3, B1, F2, B5, F5, B2
13A	F	F1, B1, F4, B1, F15, B1, F1, dc
13B		F7, B2, F15
14A	B	B1, F1, B15, F1, B4, F1, B1, dc
14B		B3, F2, B1, F3, B1, F2, B12
15A	F	F1, (B1, F4)x2, B10, F1, B1, F1, dc

15B		F3, B2, F2, B2, F1, B11, F3
16A	B	B1, F1, B1, F10, B1, F7, B1, F1, B1, dc
16B		B2, F11, B1, F1, (B2, F1)x2, B3
17A	F	F1, (B1, F2)x2, B1, F14, B1, F1, dc
17B		F3, (B2, F1)x2, B1, F14
18A	B	B1, F1, B12, F2, B1, F2, (B1, F1)x2, B1, dc
18B		B14, F1, (B2, F1)x2, B3
19A	F	F1, B2, F19, B1, F1, dc
19B		F3, (B2, F1)x2, B1, F14
20A	B	B1, F1, B12, F2, B1, F2, B2, F2, B1, dc
20B		B14, F1, B2, F1, B6
21A	F	F1, B2, F19, B1, F1, dc
21B		F3, (B2, F1)x2, B1, F14
22A	B	B1, F1, B12, F5, B1, F3, B1, dc
22B		B2, F17, B5
23A	F	F1, B22, F1, dc
23B		F24
24A	B	B1, F22, B1, dc
24B		F23, B1 (chain 1 but do not cut off colour B. The chain 1 is the first sc of border B)
25A	X	B24, dc (do not cut off colour A, continue with border A).



Row nr	B color	
<b>Astrid's Potholder #5</b>		
1A		Chain 54, start in 6 <sup>th</sup> ch from the hook: (dc1, ch1, sk1) x 24 times, dc in the last chain, you should have 25 windows.
1B		Chain 52, lay your chain over the trellis and on 6 <sup>th</sup> ch from the hook and through 2 <sup>nd</sup> colour A window: B23, F1
2A	B	B1, F22, B1, dc
2B		B1, F9, B14
3A	F	F1, B12, F1, B4, F6, dc
3B		F1, B12, F11
4A	B	B6, F4, (B1, F2)x2, B1, F5, B2, dc
4B		F1, B21, F1, B1

5A	F	F2, B5, F1, (B2, F1)x2, B4, F6, dc
5B		F8, B1, F5, B3, F1, B3, F3
6A	B	B3, F2, (B2, F2)x2, B1, F2, B1, F5, B2, dc
6B		B13, F3, B2, F2, B4
7A	F	F2, B1, F3, B1, F4, (B2, F2)x2, B2, F3, dc
7B		F14, B3, F1, B3, F3
8A	B	B3, F2, (B2, F2)x2, B4, F1, B3, F1, B2, dc
8B		B2, F3, B1, F3, B15
9A	F	F2, B1, F3, B1, F4, B2, F1, B8, F2, dc
9B		F3, B2, F2, B3, F4, B3, F1, B3, F3
10A	B	B3, F2, B2, F2, B2, F11, B2, dc
10B		B24
11A	F	F2, B11, F2, B2, F2, B2, F3, dc
11B		F3, (B2, F1)x2, B2, F3, B3, F1, B3, F3
12A	B	B3, F2, B2, F2, B2, F1, B9, F1, B2, dc
12B		B2, F3, B1, F3, B15
13A	F	F2, B1, F9, B1, F1, B8, F2, dc
13B		F15, B1, F3, B1, F4
14A	B	B2, F1, B6, F1, B1, F1, B9, F1, B2, dc
14B		B5, F1, B6, F2, (B1, F2)x2, B4
15A	F	F2, B11, F1, B1, F1, B4, F1, B1, F2, dc
15B		F1, B1, F4, B2, F4, B1, F2, B2, F1, B2, F4
16A	B	(B2, F3)x3, B3, F3, B3, dc
16B		B1, F2, B5, F2, B1, F1, B8, F1, B3
17A	F	F4, (B2, F3)x2, B1, F6, B2, F1, dc
17B		F3, B1, F6, B1, F5, B1, F1, B1, F5
18A	B	B1, F2, B1, F4, B1, F1, B4, F1, B3, F1, B5, dc
18B		(B3, F1)x2, B5, F1, B1, F2, B1, F1, B5
19A	F	F6, B3, F5, (B2, F1)x2, B3, F1, dc
19B		F5, B1, F2, B1, F15
20A	B	B1, F3, (B1, F2)x2, B6, F1, B7, dc
20B		B15, F2, B7
21A	F	F14, (B2, F1)x2, B3, F1, dc
21B		F16, B3, F5
22A	B	B1, F9, B14, dc
22B		B10, F12, B2
23A	F	F1, B22, F1, dc
23B		F24
24A	B	B1, F22, B1, dc
24B		F23, B1, dc (chain 1 but do not cut off colour B. The chain 1 is the first sc of border B)
25A	X	B24, dc (do not cut off colour A, continue with border A).