

Scheepjes
COLOUR LAB CAL
DESIGNED BY RACHELE CARMONA



Pattern copyright © Scheepjes.com. This pattern is available for unlimited personal use. You may print a copy of the pattern or keep a digital copy for personal use only. Do not reproduce this pattern or sell this pattern (either digitally or in print). This document may not be posted online, either as a complete document or in part. You are allowed to sell items that are made using this pattern as long as the designer is credited. Please do not print copies to distribute with yarn sales as this is an infringement of copyright.

PART 4 | US

COLOUR LAB CAL

VIDEO TUTORIAL

Esther from It's all in a Nutshell has created video tutorials for the Colour Lab CAL. You can find the videos on her YouTube channel:

Right-handed video (UK terminology)

<https://youtu.be/hHJUKLv7euY>

Left-handed video (UK terminology)

<https://youtu.be/gWpPKX5BU24>

PATTERN NOTES

In Part 4, 20 Triangle Motifs are worked then joined in the final rows to motifs of Part 3. The joining method used is the same as for Part 3. Some Triangle Motif cnrs are left unjoined, others are joined to cnrs of Part 3 motifs (either adjacent or diagonal), and others are joined diagonally to adjoining Triangle Motifs, *picking up cnrs of adjacent motifs of Part 3 in the process*. Pay careful attention to Schematic 11: Part 4 Joining Schematic for visual representation of these different joins.

It is recommended to mark all cnr-sps and cnr sts with st markers while working each motif. These are indicated in the pattern where relevant.

Weave in ends where indicated throughout to save time doing so at end of Part 4.

This part combined with Part 3 creates Panel 2. Panels 1 and 2 are joined tog at end of this pattern part. See Schematic 12: Join Panels 1 and 2.

If needed, ss to starting point of new rows before working beg st.

Use 2.5mm hook if using Metropolis yarn and 3.5mm hook if using Scrumptious yarn.

Alternative joining method

Triangle Motifs can be worked separately without joining final rows if preferred. Join to Part 3 using whip sts according to Schematic 11.

MEASUREMENTS

Triangle Motif Metropolis version: 13.5 x 18.5cm (slanted side)

Triangle Motif Scrumptious version: 16 x 22.5cm (slanted side)

INSTRUCTIONS

TRIANGLE MOTIF 1

Note: pay attention to RS and WS throughout, you are not turning after each row, these are indicated where applicable.

With Yarn U, ch3, ss in first ch to make ring.

Row 1 (RS) Beg tr in ring, (ch1, 2dc-cl) 4 times in ring, ch1, 1tr in ring, turn.

[4 2dc-cl, 2 tr, 5 ch-1 sps]

Row 2 (WS) (Beg dc, 1dc) in ch-1 sp, 4dc in each of next 3 ch-1 sps, 2dc in last ch-1 sp, turn. [16 dc]

Row 3 (RS) Beg dc2tog over first 2 sts, (ch5, dc4tog over next 4 sts) 3 times, ch5, dc2tog over last 2 sts, **do not** turn. [3 dc4tog, 2 dc2tog, 4 ch-5 sps]

Fasten off and weave in ends.

Row 4 (RS) Join Yarn A with ss in beg dc2tog, beg dc in same st as ss, 8dc in each of next 3 ch-5 sps, 7dc in next ch-5 sp, 1dc in last st, turn. [33 dc]

Row 5 (WS) 1sc in each st to end, turn. [33 sc]

Fasten off and weave in ends.

Row 6 (RS) Join Yarn U with ss in first sc, (beg tr, ch2, 2dc-cl) in same st as ss, (ch1, sk 3 sts, 2dc-cl in next st, ch3, 2dc-cl in same st) 7 times, ch1, sk 3 sts, (2dc-cl, ch2, 1tr) in last st, turn. [16 2dc-cl, 2 tr, 17 ch-sps]

Row 7 (WS) Beg tr in first ch-sp, (ch2, 2tr-cl) twice in first ch-sp, *ch3, sk 1 ch-sp, (1sc in next ch-sp, ch2) 4 times, 1sc in next ch-sp, ch3, sk 1 ch-sp*, (2tr-cl, ch2) 3 times in next ch-3 sp (*second ch-2 forms cnr-sp*), 2tr-cl in same ch-3 sp, rep from * to * once more, (2tr-cl, ch2) twice in last ch-sp, 1tr in last st, turn. [8 2tr-cl, 2 tr, 10 sc, 15 ch-2 sps, 4 ch-3 sps]

Row 8 (RS) (Beg tr, ch2, 3dc-cl) in first ch-sp, *(ch2, 1sc in next ch-sp) 8 times, ch2*, (3dc-cl, ch3 (*forms cnr-sp*), 3dc-cl) in cnr-sp, rep from * to * once more, (3dc-cl, ch2, 1tr) in last ch-sp, **do not** turn. [4 3dc-cl, 2 tr, 16 sc, 20 ch-2 sps, 1 ch-3 cnr-sp]

Fasten off and weave in ends.

Row 9 (RS) Join Yarn A with ss in first ch-sp, (beg tr, ch1, 3dc) in same ch-sp, 3dc in each of next nine ch-sps, (3dc, ch2 (*forms cnr-sp*), 3dc) in cnr-sp, 3dc in each of next nine ch-sps, (3dc, ch1, 1tr) in last ch-sp, turn. [2 tr, 66 dc, 3 ch-sps]

Row 10 (WS) 2sc in first ch-sp, 33sc, 3sc in cnr-sp (*second sc is cnr st*), 33sc, 2sc in last ch-sp, turn. [73 sc]

Row 11 (RS) Ss in first sc, 1sc in same st, (ch3, sk 2 sts, 1sc in next st) to next cnr st, ch3, work this cnr and join to adjacent cnr of **Part 3: Motif 1** as folls: 1sc in cnr st of working motif, ch1, PLT join through adjoining ch-3 cnr-sp, ch2, 1sc in same cnr st of working motif, cont using Flat Braid join method to join next edge of this motif to adjoining edge of **Part 3: Motif 1** as folls: *ch1, remove lp from hook, insert hook front to back through corresponding ch-3 sp of **Part 3: Motif 1**, place lp back on hook, pull up lp to front of work, ch2, sk 2 sts of working motif, 1sc in next st; rep from * 10 more times, Flat Braid join, sk 2 sts of working motif, work next st (third triangle cnr) and join to adjoining *diagonal* cnr of **Part 3: Motif 3** in same way as prev. *Note: third (long) side is left unworked.*

[27 sc, 26 ch-sps]

Fasten off and weave in ends.

TRIANGLE MOTIF 2

With Yarn B, ch3, ss in first ch to make ring.

Row 1 (RS) Beg dc in ring, 8dc in ring, turn. [9 dc]

Row 2 (WS) (Beg dc, 2dc) in first dc, 1dc, ch1, sk 1 st, 1dc, 5dc in next st (*third dc is cnr st*), 1dc, ch1, sk 1 st, 1dc, 3dc in last st, turn. [15 dc, 2 ch-1 sps]

Row 3 (RS) (Beg dc, 2dc) in first dc, *1dc, ch3, sk 2 sts, 1sc in ch-sp, ch3, sk 2 sts, 1dc*, 5dc in cnr st (*third dc is cnr st*), rep from * to * once more, 3dc in last st, **do not** turn.

[15 dc, 2 sc, 4 ch-3 sps]

Fasten off and weave in ends.

Row 4 (RS) Join Yarn BB with ss in beg dc, (beg dc, 2dc) in same st, *1dc, ch4, sk 2 dc and ch-3 sp, pc in sc, ch4, sk ch-3 sp and 2 dc, 1dc*, 5dc in cnr st (*third dc is cnr st*), rep from * to * once more, 3dc in last st, turn. [2 pc, 15 dc, 4 ch-4 sps]

Row 5 (WS) (Beg dc, 2dc) in first dc, *1dc, ch1, sk 1 st, 1dc, 3dc in ch-sp, ch2, 3dc in next ch-sp, 1dc in next dc, ch1, sk 1 st, 1dc*, 5dc in cnr st (*third dc is cnr st*), rep from * to * once more, 3dc in last st, turn. [31 dc, 2 ch-2 sps, 4 ch-1 sps]

Row 6 (RS) (Beg dc, 2dc) in first dc, *1dc, ch3, sk 2 dc, 1sc in ch-1 sp, ch3, sk 2 dc, 2dc, 3dc in ch-2 sp, 2dc, ch3, sk 2 dc, 1sc in ch-1 sp, ch3, sk 2 dc, 1dc*, 5dc in cnr st (*third dc is cnr st*), rep from * to * once more, 3dc in last st, **do not** turn. [29 dc, 4 sc, 8 ch-sps]

Fasten off and weave in ends.

Row 7 (RS) Join Yarn B with ss in beg dc, (beg dc, ch1, 2dc) in same st, *1dc, ch4, sk 2 dc and ch-3 sp, pc in sc, ch4, sk ch-3 sp and 2 dc, 3dc, ch4, sk 2 dc and ch-3 sp, pc in sc, ch4, sk 2 dc, 1dc*, (2dc, ch3 (*forms cnr-sp*), 2dc) in cnr st, rep from * to * once more, (2dc, ch1, 1dc) in last st, turn. [4 pc, 20 dc, 11 ch-sps]

Row 8 (WS) (Beg dc, ch1, 2dc) in first ch-sp, *(3dc, 3dc in ch-sp, ch2, 3dc in next ch-sp) twice, 3dc*, (2dc, ch3 (*forms cnr-sp*), 2dc) in cnr-sp, rep from * to * once more, (2dc, ch1, dc) in last sp, **do not** turn. [52 dc, 7 ch-sps]

Fasten off and weave in ends.

Row 9 (WS) Join Yarn B with ss in first ch-sp, 3sc in same ch-sp, *8sc, 3sc in ch-sp, 9sc, 3sc in ch-sp, 8sc*, 5sc in cnr-sp (*third sc is cnr st*), rep from * to * once more, 3sc in last ch-sp, turn. [73 sc]

In next row, the first and last sts that correspond to cnrs of the triangle shape are also referred to as cnrs, in addition to the cnr-st that is at the middle of the prev row. This applies for all final rows for remaining Triangle Motifs.

Row 10 (RS) Ss in first st, work this first triangle cnr and join in *adjoining* diagonal cnr of **Part 3: Motif 1** (*when you grab the lp to PLT, put your hook underneath prev cnr join to entrap it when you complete the ch*), cont using Flat Braid Join method to join next edge of this motif to adjoining edge of **Part 3: Motif 3** to next cnr, work this cnr and join to adjoining *diagonal* cnr of **Part 3: Motif 6** in same way as prev, cont using Flat Braid join method to join next edge of this motif to adjoining edge of **Part 3: Motif 5** to end (third triangle cnr), **do not** join this cnr. *Note: third (long) side is left unworked.* [28 sc, 27 ch-sps]
Fasten off and weave in ends.

TRIANGLE MOTIF 3

With Yarn N, ch3, ss in first st to make ring.

Turn after each row throughout.

Row 1 (RS) Beg tr in ring, ch1, 2dc in ring, ch3 (*forms cnr-sp*), 2dc in ring, ch1, 1tr in ring, turn. [2 tr, 4 dc, 1 ch-3 sps]

Row 2 (WS) (Beg tr, ch1, 2dc) in first ch-sp, ch1, sk 2 dc, (2dc, ch3 (*forms cnr-sp*), 2dc) in cnr-sp, ch1, sk 2 dc, (2dc, ch1, 1tr) in last ch-sp, turn. [2 tr, 8 dc, 1 ch-3 sp, 4 ch-1 sps]

Row 3 (RS) 3sc in ch-sp, 1sc in each of next 5 sts/sps, 5sc in cnr-sp (*third sc is cnr st*), 1sc in each of next 5 sts/sps, 3sc in ch-sp, turn. [21 sc]

Note: tr sts of Row 4 form tiny 'bobbles' on RS of work.

Row 4 (WS) *(1sc, 1tr, 1sc) in cnr st, (1tr, 1sc) 4 times, 1tr; rep from * once more, (1sc, 1tr, 1sc) in last st, turn. [13 tr, 14 sc]

Row 5 (RS) 1sc in first sc, (ch3, 1sc in next sc) to end, turn. [14 sc, 13 ch-3 sps]

Row 6 (WS) (Beg tr, ch1, 2dc) in first ch-sp, *2dc in each of next two ch-sps, (1dc, ch1, 1dc) in next ch-sp, 2dc in each of next two ch-sps*, (2dc, ch3 (*forms cnr-sp*), 2dc) in cnr-sp, rep from * to * once more, (2dc, ch1, 1tr) in last ch-sp, turn. [2 tr, 28 dc, 5 ch-sps]

Row 7 (RS) 3sc in first ch-sp, 15sc (*eighth sc falls in ch-sp*), 5sc in cnr-sp (*third sc is cnr st*), 15sc (*eighth sc falls in ch-sp*), 3sc in last ch-sp, turn. [41 sc]

Fasten off and weave in ends.

Note: tr sts of Row 8 form tiny 'bobbles' on RS of work.

Row 8 (WS) Join Yarn A with ss in first st, *(1sc, 1tr, 1sc) in cnr st, (1tr, 1sc) 9 times, 1tr; rep from * once more, (1sc, 1tr, 1sc) in last st, turn. [23 tr, 24 sc]

Row 9 (RS) Rep Row 5. [24 sc, 23 ch-sps]

Row 10 (WS) (Beg tr, ch2, 3dc) in first ch-sp, *2dc in each of next five ch-sps, ch1, 2dc in each of next five ch-sps*, (3dc, ch3 (*forms cnr-sp*), 3dc) in cnr-sp, rep from * to * once more, (3dc, ch2, 1tr) in last ch-sp, turn. [2 tr, 52 dc, 5 ch-sps]

Row 11 (RS) (Beg tr, ch2, 3dc) in first ch-sp, *(ch1, sk 1 st, 1dc) 13 times (*seventh dc falls in ch-sp*), ch1*, (3dc, ch3, 3dc) in cnr-sp, rep from * to * once more, (3dc, ch2, 1tr) in last ch-sp, turn. [2 tr, 38 dc, 31 ch-sps]

Row 12 (WS) 2sc in first ch-sp, (1sc in each of next 33 sts/sps, 3sc in next ch-sp) twice, *omitting final 1 sc of last rep*, turn. [73 sc]

Row 13 (RS) Ss in first st, work this cnr and join to adjoining *diagonal* cnr of **Triangle Motif 2** while picking up adjacent cnr of **Part 3: Motif 5** as follows: 1sc in cnr st of working motif, ch1, remove lp from hook, insert hook from front to back through adjacent cnr-sp of **Part 3: Motif 5**, insert hook in adjoining *diagonal* cnr of **Triangle Motif 2** and draw through cnr-sp of Part 3: Motif 5 (that is already on hook), place lp on hook, pull lp through to front of work, ch2, 1sc in same cnr st of working motif (first cnr joined), cont using Flat Braid Join method to join next edge of this motif to adjoining edge of **Part 3: Motif 5** to next cnr, work this cnr and join to adjoining *diagonal* cnr of **Part 3: Motif 7** in same way as prev, (ch3, sk 2 sts, 1sc in next st) to end, ch3, 1dc in same st. *Note: third (long) side is left unworked.* [28 sc, 27 ch-sps]

Fasten off and weave in ends.

TRIANGLE MOTIF 4

Rows 1-9 Work as for Motif 2, alt Yarns B and X. Beg with Yarn B for Rows 1-3, change to Yarn X for Rows 4-6, and finish with Yarn B for Rows 7-9.

Rows 10 Cont with Yarn B, work this cnr and join to adjacent cnr of Triangle Motif 3

in same way as prev, cont using Flat Braid join method to join next edge of this motif to adjoining edge of Triangle Motif 3 to next cnr st, work this cnr and join to adjoining *diagonal* cnr of **Part 3: Motif 5** (*when you grab the lp to PLT, put your hook underneath prev cnr join to entrap it when you complete the ch*), cont using Flat Braid join method to join next edge of this motif to adjoining edge of **Part 3: Motif 7** to end, **do not** join this cnr. *Note: third (long) side is left unworked.* [28 sc, 27 ch-sps]
Fasten off and weave in ends.

TRIANGLE MOTIF 5

Rows 1-12 Work as for Motif 3, alt Yarns N and C. Beg with Yarn N for Rows 1-7 and finish with Yarn C for Rows 8-12.

Rows 13 Cont with Yarn C, ss in first st, work this cnr and join to adjoining *diagonal* cnr of **Triangle Motif 4** *while picking up adjacent cnr of Part 3: Motif 7* as folls: 1sc in cnr st of working motif, ch1, remove lp from hook, insert hook from front to back through adjacent cnr-sp of **Part 3: Motif 7**, insert hook in adjoining *diagonal* cnr of **Triangle Motif 4** and draw through cnr-sp of Part 3: Motif 7 (that is already on hook), place lp on hook, pull lp through to front of work, ch2, 1sc in same cnr st of working motif (first cnr joined), cont using Flat Braid join method to join next edge of this motif to adjoining edge of **Part 3: Motif 7** to next cnr st, work this cnr and join to adjoining *diagonal* cnr of **Part 3: Motif 8** (*when you grab the lp to PLT, put your hook underneath prev cnr join to entrap it when you complete the ch*), cont using Flat Braid join method to join next edge of this motif to adjoining edge of **Part 3: Motif 9** to next cnr st, work this cnr and join to adjoining *diagonal* cnr of **Part 3: Motif 11** in same way as prev. *Note: third (long) side is left unworked.* [28 sc, 27 ch-sps]
Fasten off and weave in ends.

TRIANGLE MOTIF 6

With Yarn A, ch3, ss in first ch to make ring.

Row 1 (WS) Beg dc in ring, 7dc in ring, turn. [8 dc]

Row 2 (RS) Beg tr, ch1, (3tr-cl, ch3) 6 times omitting final ch3, ch1, 1tr, **do not** turn.
[2 tr, 6 3tr-cl, 5 ch-3 sps, 2 ch-1 sps]
Fasten off and weave in ends.

Row 3 (RS) Join Yarn Y with ss in first st, beg dc in same st as ss, 2dc in first ch-sp, (ch1, 2dc, ch1, 2dc) in each of next five ch-sps, ch1, 2dc in last ch-sp, 1dc, **do not** turn.
[26 dc, 11 ch-1 sps]
Fasten off and weave in ends.

Row 4 (RS) Join Yarn Y with ss in first st, 1sc in same st, (ch3, 1sc in next ch-sp) 11 times, ch3, 1sc in last st, turn. [13 sc, 12 ch-3 sps]

Row 5 (WS) Beg dc in first st, (ch3, 1sc in next ch-sp) 12 times (*seventh ch-3 sp forms cnr-sp*), ch3, 1dc in last st, turn. [2 dc, 12 sc, 13 ch-3 sps]

Row 6 (RS) Beg tr in dc, ch2, pc in ch-sp, *(ch3, 1sc in next ch-sp) 5 times, ch3*, (pc, ch3 (*forms cnr-sp*), pc) in cnr-sp, rep from * to * once more, pc in last ch-sp, ch2, 1tr, **do not**

turn. [4 pc, 2 tr, 10 sc, 15 ch-sps]

Fasten off and weave in ends.

Row 7 (RS) Join Yarn A with ss in first ch-sp, 3sc in same ch-sp as ss, 3sc in each of next three ch-sps, 1sc in sc, 3sc in each of next three ch-sps, 5sc in next ch-sp (*third sc is cnr st*), 3sc in each of next three ch-sps, 1sc in sc, 3sc in each of next four ch-sps, turn. [49 sc]

Row 8 (WS) (Beg tr, ch1, 3dc) in first st, *(sk 2 sts, 3dc in next st) 8 times*, ch2 (*forms cnr-sp*), 3dc in same st, rep from * to * once more, ch1, 1tr in same st, turn. [2 tr, 54 dc, 3 ch-sps]

Row 9 (RS) (Beg tr, ch1, 3dc) in first ch-sp, *3dc bet each of next four 3dc-grs, ch1, 3dc bet each of next four 3dc-grs*, (3dc, ch3 (*forms cnr-sp*), 3dc) in cnr-sp, rep from * to * once more, (3dc, ch1, 1tr) in last ch-sp, turn. [2 tr, 60 dc, 1 ch-3 sp, 4 ch-1 sps]

Row 10 (WS) 3sc in first ch-sp, 1sc in each of next 31 sts/sps (*16th sc falls in ch-1 sp*), 5sc in cnr-sp (*third sc is cnr st*), 1sc in each of next 31 sts/sps, 3sc in last sp, turn. [73 sc]

Row 11 (RS) Work as for Row 10 of Motif 2, using Schematic 12 as guide for which cnrs to join to.

Fasten off and weave in ends.

TRIANGLE MOTIF 7

Rows 1-12 Work as for Motif 3, alt Yarns K and A. Beg with Yarn K for Rows 1-7 and finish with Yarn A for Rows 8-12.

Row 13 Cont with Yarn A, work as for Row 13 of Motif 3, using Schematic 12 as guide for which cnrs to join to.

TRIANGLE MOTIF 8

Rows 1-10 Work as for Motif 1, alt Yarns U and B. Beg with Yarn U for Rows 1-3, change to Yarn B for Rows 4-5, change to Yarn U for Rows 6-8, and finish with Yarn B for Rows 9-10.

Row 11 Cont with Yarn B, work as for Row 10 of Motif 4, using Schematic 12 as guide for which cnrs to join to.

TRIANGLE MOTIF 9

Rows 1-12 Work as for Motif 3, alt Yarns K and C. Beg with Yarn K for Rows 1-7 and finish with Yarn C for Rows 8-12.

Row 13 Cont with Yarn C, work as for Row 13 of Motif 5, using Schematic 12 as guide for which cnrs to join to.

TRIANGLE MOTIF 10

Rows 1-9 Work as for Motif 2, alt Yarns C and BB. Beg with Yarn C for Rows 1-3, change to Yarn BB for Rows 4-6, and finish with Yarn C for Rows 7-9.

Row 10 Cont with Yarn C, ss in first st, work this cnr and join to adjoining *diagonal* cnr of **Part 3: Motif 17** in same way as prev, cont using Flat Braid join method to join next edge of this motif to adjoining edge of **Part 3: Motif 19** to next cnr st, work this cnr and join to adjacent cnr of **Part 3: Motif 19** in same way as prev, (ch3, sk 2 sts, 1sc in next st) to end, mark last (cnr) st with st marker (for beg of Join Panel 2 to Panel 1 section below). *Note:*

third (long) side is left unworked. [28 sc, 27 ch-sps]
Fasten off and weave in ends.

TRIANGLE MOTIF 11

Rows 1-9 Work as for Motif 2, alt Yarns B and GG. Beg with Yarn B for Rows 1-3, change to Yarn GG for Rows 4-6, and finish with Yarn B for Rows 7-9.

Row 10 Cont with Yarn B, ss in cnr st, (1sc, ch3, 1sc) in cnr st, (ch3, sk 2 sts, 1sc in next st) to next cnr st, *leaving first cnr unjoined*, work this cnr and join to adjoining *diagonal* cnr of

Part 3: Motif 4 in same way as prev, cont using Flat Braid join method to join next edge of this motif to adjoining edge of **Part 3: Motif 2** to next cnr st, work this cnr and join to adjacent cnr of **Part 3: Motif 2** in same way as prev. Place st marker in last sc worked (for beg of Bottom Edge of Panel 2 section below). *Note: third (long) side is left unworked.* [28 sc, 27 ch-sps]

Fasten off and weave in ends.

TRIANGLE MOTIF 12

Rows 1-10 Work as for Motif 6, alt Yarns C and AA. Beg with Yarn C for Rows 1-2, change to Yarn AA for Rows 3-6, and finish with Yarn C for Rows 7-10.

Row 11 Cont with Yarn C, ss in first st, (1sc, ch3, 1sc) in same st, leaving first cnr unjoined, cont using Flat Braid join method to join edge of this motif to adjoining edge of **Part 3: Motif 4** to next cnr st, work this cnr and join to adjoining *diagonal* cnr of **Part 3: Motif 2** in same way as prev, cont using Flat Braid join method to join next edge of this motif to adjoining edge of Triangle Motif 11 to last cnr, join cnr to adjacent cnr of Triangle Motif 11. *Note: third (long) side is left unworked.* [28 sc, 27 ch-sps]

Fasten off and weave in ends.

TRIANGLE MOTIF 13

Rows 1-10 Work as for Motif 6, using Yarns C and DD. Beg with Yarn C for Rows 1-2, change to Yarn DD for Rows 3-6, and finish with Yarn C for Rows 7-10.

Row 11 Cont with Yarn C, ss in first st, work this cnr and join to adjoining *diagonal* cnr of **Part 3: Motif 8** in same way as prev, cont using Flat Braid join method to join next edge of this motif to adjoining edge of **Part 3: Motif 6** to next cnr st, work this cnr and join to adjoining *diagonal* cnr of **Part 3: Motif 3** in same way as prev, cont using Flat Braid join method to join next edge of this motif to adjoining edge of **Part 3: Motif 4** in same way as prev to next cnr st, work this cnr and join to adjoining *diagonal* cnr of **Triangle Motif 12** while picking up adjacent cnr of Part 3: Motif 4 as folls: 1sc in cnr st of working motif, ch1, remove lp from hook, insert hook from front to back through adjacent cnr-sp of **Part 3: Motif 4**, insert hook in adjoining *diagonal* cnr of **Triangle Motif 12** and draw through cnr-sp of Part 3: Motif 4 (that is already on hook), place lp on hook, pull lp through to front of work, ch2, 1sc in same cnr st of working motif (third cnr joined). *Note: third (long) side is left unworked.* [28 sc, 27 ch-sps]

Fasten off and weave in ends.

TRIANGLE MOTIF 14

Rows 1-10 Work as for Motif 6, alt Yarns B and AA. Beg with Yarn B for Rows 1-2, change to Yarn AA for Rows 3-6, and finish with Yarn B for Rows 7-10.

Row 11 Cont with Yarn B, ss in first st and cont using Flat Braid join method to join first edge of this motif to adjoining edge of **Part 3: Motif 10** in same way as prev to next cnr st, *leaving first cnr unjoined*, work second cnr and join to adjoining *diagonal* cnr of **Part 3: Motif 9** in same way as prev, cont using Flat Braid join method to join next edge of this motif to adjoining edge of **Part 3: Motif 8** in same way as prev to next cnr st, work this cnr and join to adjoining *diagonal* cnr of **Part 3: Motif 6** in same way as prev. *Note: third (long) side is left unworked.* [28 sc, 27 ch-sps]
Fasten off and weave in ends.

TRIANGLE MOTIF 15

Rows 1-10 Work as for Motif 1, alt Yarns FF and C. Beg with Yarn FF for Rows 1-3, change to Yarn C for Rows 4-5, change to Yarn FF for Rows 6-8, and finish with Yarn C for Rows 9-10.

Row 11 Cont with Yarn C, ss in first st, (1sc, ch3, 1sc) in same st, (ch3, sk 2 sts, 1sc in next st) to next cnr st, *leaving first cnr unjoined*, work this cnr and join to adjoining *diagonal* cnr of **Part 3: Motif 12** in same way as prev, cont using Flat Braid join method to join next edge of this motif to adjoining edge of **Part 3: Motif 10** in same way as prev to next cnr st, work this cnr and join to adjoining *diagonal* cnr of **Triangle Motif 14** while *picking up adjacent cnr of Part 3: Motif 10* as folls: 1sc in cnr st of working motif, ch1, remove lp from hook, insert hook from front to back through adjacent cnr-sp of **Part 3: Motif 10**, insert hook in adjoining *diagonal* cnr of **Triangle Motif 14** and draw through cnr-sp of Part 3: Motif 10 (that is already on hook), place lp on hook, pull lp through to front of work, ch2, 1sc in same cnr st of working motif (third cnr joined). *Note: third (long) side is left unworked.* [28 sc, 27 ch-sps]
Fasten off and weave in ends.

TRIANGLE MOTIF 16

Rows 1-12 Work as for Motif 3, alt Yarns GG and B. Beg with Yarn GG for Rows 1-7 and finish with Yarn B for Rows 8-12.

Row 13 Cont with Yarn B, work as for Row 11 of Motif 12, using Schematic 12 as guide for which cnrs to join to.

TRIANGLE MOTIF 17

Rows 1-10 Work as for Motif 1, alt Yarns FF and B. Beg with Yarn FF for Rows 1-3, change to Yarn B for Rows 4-5, change to Yarn FF for Rows 6-8, and finish with Yarn B for Rows 9-10.

Row 11 Cont with Yarn B, work as for Row 11 of Motif 13, using Schematic 12 as guide for which cnrs to join to.

TRIANGLE MOTIF 18

Rows 1-9 Work as for Motif 2, alt Yarns A and CC. Beg with Yarn A for Rows 1-3, change to Yarn CC for Rows 4-6, and finish with Yarn A for Rows 7-9.

Row 10 Cont with Yarn A, work as for Row 11 of Motif 14, using Schematic 12 as guide for which cnrs to join to.

TRIANGLE MOTIF 19

Rows 1-10 Work as for Motif 6, alt Yarns A and EE. Beg with Yarn A for Rows 1-2, change to Yarn EE for Rows 3-6, and finish with Yarn A for Rows 7-10.

Row 11 Cont with Yarn A, work as for Row 11 of Motif 15, using Schematic 12 as guide for which cnrs to join to.

TRIANGLE MOTIF 20

Rows 1-10 Work as for Motif 1, alt Yarns Z and C. Beg with Yarn Z for Rows 1-3, change to Yarn C for Rows 4-5, change to Yarn Z for Rows 6-8, and finish with Yarn C for Rows 9-10.

Row 11 Cont with Yarn C, work this cnr and join to adjacent cnr of **Part 3: Motif 20** in same way as prev, cont using Flat Braid join method to join next edge of this motif to adjoining edge of **Part 3: Motif 20** to next cnr st, work this cnr and join to adjoining *diagonal* cnr of **Part 3: Motif 18** in same way as prev, cont using Flat Braid join method to join next edge of this motif to adjoining edge of Triangle Motif 19 to next cnr st, work this cnr and join to adjacent cnr of Triangle Motif 19 in same way as prev. [28 sc, 27 ch-sps] Fasten off and weave in ends.

JOIN PANEL 2 TO PANEL 1

See Schematic 12: Join Panels 1 and 2.

In this section, work Row 1 across the top zigzag edge of Panel 2 (just made), then in Row 2, join this same edge to Panel 1 using Flat Braid joining method, as used to join motifs tog throughout Parts 3 and 4 (Panel 2).

Row 1 (RS) Join Yarn A with ss in marked cnr of Triangle Motif 10, 2sc in same cnr st, work 48sc evenly across to next cnr (of Triangle Motif 10), 1sc in cnr-sp, sc2tog over same cnr-sp and next cnr-sp (of Triangle Motif 9), 1sc in same cnr-sp (of Triangle Motif 9), work 99sc evenly across to next 'peak' (where Triangle Motifs 7-8 meet), with corresponding cnr-sps of Triangle Motifs 7 and 8 held tog, work 3sc, work 99sc evenly across to next 'valley', 1sc in cnr-sp of Triangle Motif 6, sc2tog over same cnr-sp and next cnr-sp (of Triangle Motif 5), 1sc in same cnr-sp (of Triangle Motif 5), work 99sc evenly across to next 'peak' (where Triangle Motifs 3-4 meet), with corresponding cnr-sps of Triangle Motifs 3 and 4 held tog, work 3sc, work 99sc evenly across to last 'valley', 1sc in cnr-sp of Triangle Motif 2, sc2tog over same cnr-sp and next cnr-sp (of Triangle Motif 1), 1sc in same cnr-sp (of Triangle Motif 1), 48sc evenly across to next cnr, 2sc in cnr st, fasten off and weave ends. [508 sc, 3 sc2tog]

Row 2 (RS) Join Yarn A with ss in first sc made in Row 1, 1sc in same st, ch1, PLT join in corresponding cnr-sp of **Part 2: Chain Loop Row**, ch2, 1sc in same st, *1sc, ch1, PLT join in corresponding sp of **Part 2: Chain Loop Row**, ch2, sk 2 sts, 1sc in next st (*Flat Braid join*)

complete); rep from * 16 more times to 'valley' (where Triangle Motifs 9-10 meet).

Note: after working the final sc ('valley' sc) of the rep (17th/34th) you will PLT in corresponding sc ('peak' sc) of Panel 1, ch1, PLT next ch-3 sp of Panel 1, ch2, sk 2 sts, 1sc on Panel 2.

(Rep Flat Braid join 34 times across next edge to 'peak', joining 'peak' sc to corresponding 'valley' sc of Panel 1 in same way as prev, rep Flat Braid join 34 times across next edge to 'valley' in same way as prev) twice, rep Flat Braid join 17 times across last edge (of Triangle Motif 1) to end, ch1, PLT join in corresponding cnr-sp, ch2, 1sc in same st, fasten off and weave in ends. [173 sc, 172 ch-sps]

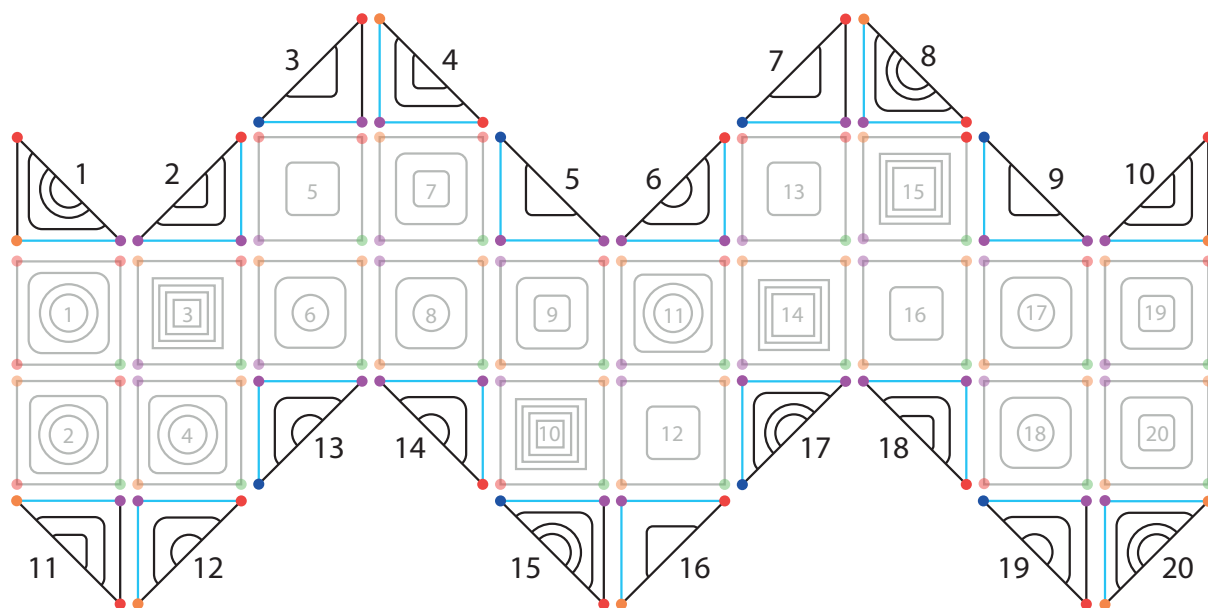
BOTTOM EDGE OF PANEL 2

Row 1 (RS) Join Yarn A with ss in marked cnr of Triangle Motif 11, 2sc in same cnr-sp, 48sc evenly across to next 'peak', (work 3sc evenly across adjoining cnr-sps at 'peak', 99sc evenly across to 'valley', 1sc in cnr-sp, sc2tog over same cnr-sp and cnr-sp of adjoining motif, 1sc in same cnr-sp, 99sc evenly across to next 'peak') twice, work 3sc evenly across adjoining cnr-sps at 'peak', 48sc evenly across last edge to end, 2sc in last cnr-sp, fasten off and weave in ends. [509 sc, 2 sc2tog]

Chain Loop Row (RS) *Note: worked in same way as for Chain Loop Row at end of Part 2.* Join Yarn A with in first sc made in Row 1, (1sc ch3, 1sc) in same st as ss, (ch3, sk 2 sts, 1sc) 170 times across bottom edge of Panel 2, ch3, 1sc in same st as prev sc, fasten off and weave in ends.

Panel 2 is now complete.

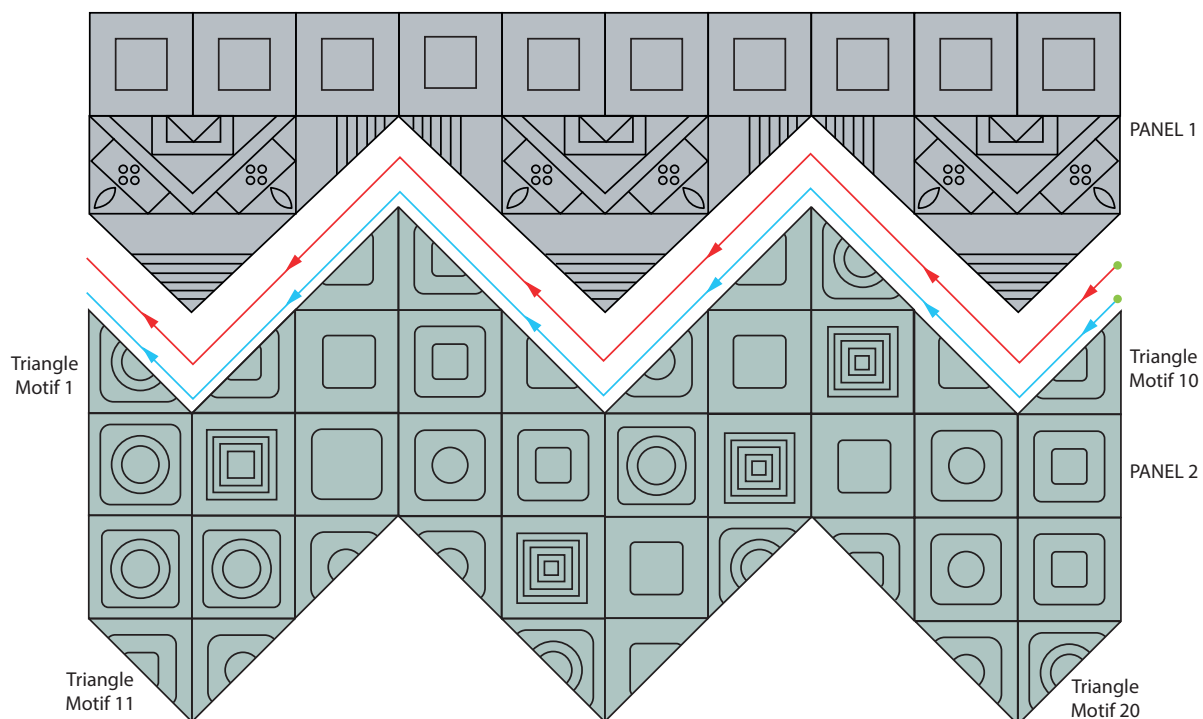
Schematic 11: Part 4 Joining Schematic






Key

- start/end
- leave corner unjoined
- join to adjacent cnr
- join to diagonal cnr
- join to diagonal cnr and pick up third cnr
- | join side
- 2 joining order

Schematic 12: Join Panels 1 and 2



Key

-  Row 1
-  Row 2
-  start