

Scheepjes

# COLOUR LAB CAL

DESIGNED BY RACHELE CARMONA



Pattern copyright © Scheepjes.com. This pattern is available for unlimited personal use. You may print a copy of the pattern or keep a digital copy for personal use only. Do not reproduce this pattern or sell this pattern (either digitally or in print). This document may not be posted online, either as a complete document or in part. You are allowed to sell items that are made using this pattern as long as the designer is credited. Please do not print copies to distribute with yarn sales as this is an infringement of copyright.

## PART 2 | UK

# COLOUR LAB CAL

### VIDEO TUTORIAL

Esther from It's all in a Nutshell has created video tutorials for the Colour Lab CAL. You can find the videos on her YouTube channel:

#### Right-handed video (UK terminology)

<https://youtu.be/IK9olyKpcMg>

#### Left-handed video (UK terminology)

<https://youtu.be/LpgYoHkuprw>

### PATTERN NOTES

Part 2 consists of three motifs (Centre Motif, Right-Hand Side Motif and Left-Hand Side Motif), each divided into four sections made up of join-as-you-go Base Triangles, Fill Triangles and Border Sections. Right-Hand Side Motif and Left-Hand Side Motif are mostly identical to Centre Motif, only omitting one Fill Triangle each.

Pay close attention to Schematics for placement of join-as-you-go sections throughout, and direction of joining Part 2 to Part 1 in final Edging Round section of instructions below.

Measurements for Centre Motif are given below, and further measurements are indicated throughout instructions for reference as you go.

Pay close attention to RS and WS and turning indications throughout. Use st markers to mark all cnrs and indicated reference sts to assist in joining all sections correctly as you go.

All new rows start with beg sts (see Tips & Tricks document for all st instructions) and do not require turning chs. Turning chs are therefore omitted throughout.

Use 2.5mm hook if using Metropolis yarn and 3.5mm hook if using Scrumptious yarn.

### MEASUREMENTS

Metropolis version: Panel 1 measures 136 x 42cm; see measurements for sections in Instructions below

Scrumptious version: Panel 1 measures 168 x 52cm; see measurements for sections in Instructions below

### CENTRE MOTIF

#### SECTION 1

##### Base Triangle

With Yarn I, ch3, ss in first ch to make ring.

**Row 1 (WS)** 5dc in ring, turn. [5 dc]

**Row 2 (RS)** Beg pc, (ch5, 1 dc, ch5, pc) twice, turn. [3 pc, 2 dc, 4 ch-5 sps]

**Row 3 (WS)** Beg dtr in pc, (ch3, 3tr in ch-5 sp, ch1, 3tr in next ch-5 sp) twice, ch3, 1 dtr in pc, turn. [2 dtr, 12 tr, 3 ch-3 sps, 2 ch-1 sps]



**Row 4 (RS)** 1dc, 2dc in ch-3 sp, (3dc, 1dc in ch-1 sp, 3dc, 5dc in ch-3 sp) twice, *omitting final 3 dc*, 1dc in dtr, **do not** turn. [25 dc]

Place st marker in 14<sup>th</sup> st of Row 4 to mark starting point for Fill Triangle 2.

Fasten off and weave in ends.

### Fill Triangle 1

This section is worked onto one short side of Base Triangle only.

**Row 1 (RS)** Join Yarn B with ss in second dc of Row 4 of Base Triangle, beg tr3tog over same and next 2 sts, ch1, sk 2 sts, (3tr-cl, ch3, 3tr-cl) in next st, ch1, sk 2 sts, tr3tog, turn. [2 tr3tog, 2 3tr-cl, 2 ch-1 sps, 1 ch-3 sp]

**Row 2 (WS)** Sk first st, 1dc in ch-1 sp, 5dc in ch-3 sp (*third dc is cnr st*), 1dc in ch-1 sp. [7 dc]

Fasten off and weave in ends.

### Fill Triangle 2

This section is worked onto unworked short side of Base Triangle only.

**Row 1 (RS)** Join Yarn B with ss in marked dc of Row 4 of Base Triangle, work as for Fill Triangle 1.

**Row 2 (WS)** Rep Row 2 of Fill Triangle 1.

Fasten off and weave in ends.

### Border Section

Work rows of Border Section around short sides of Fill Triangle 1 and Fill Triangle 2, beg and ending in first and last sts of Row 4 of Base Triangle, as follows:

**Row 1 (RS)** Join Yarn B with ss in first dc of Row 4 of Base Triangle, 1dc in same st as ss, 6dc evenly across first short side of Fill Triangle 1 to cnr st, 3dc in cnr st, 6dc evenly across second short side to unworked dc of Row 4 at top of Base Triangle, 1dc in centre dc, 6dc evenly across first short side of Fill Triangle 2 to next cnr st, 3dc in cnr st, 6dc evenly across second short side to last dc of Row 4 of Base Triangle, 1dc, turn. [33 dc]

Fasten off Yarn B.

**Row 2 (WS)** Join Yarn I with ss in first dc, (1dc in each st to cnr st, 3dc in cnr st) twice, 1dc in each st to end, turn. [37 dc]

Cont to turn after each row.

**Row 3 (RS)** Beg tr, (1tr, ch1, sk 1 st) 4 times, (1tr, ch3, 1tr) in cnr st, (ch1, sk 1 st, 1tr) 8 times, ch1, sk 1 st, (1tr, ch3, 1tr) in cnr st, (ch1, sk 1 st, 1tr) 4 times, 1tr. [22 tr, 17 ch-1 sps, 2 ch-3 cnr-sps]

*Note: dtr sts of Row 4 form tiny 'bobbles' on RS of work.*

**Row 4 (WS)** (1dc, 1dtr) 5 times over 10 sts/sps, (1dc, 1dtr) twice in cnr-sp, 1dc in same sp, (1dtr, 1dc) 9 times over 18 sts/sps, 1dtr in next st, (1dc, 1dtr) twice in cnr-sp, 1dc in same sp, (1dtr, 1dc) 5 times over 10 sts/sps. [24 dtr, 25 dc]

**Row 5 (RS)** 1dc, (ch3, 1dc in next dc) 6 times, ch3, 1dc in same st as prev dc, (ch3, 1dc in next dc) 12 times, ch3, 1dc in same st as prev dc, (ch3, 1dc in next dc) 6 times. [27 dc, 26 ch-3 sps]

Place st marker in 14<sup>th</sup> dc of Row 5 to mark starting point for Fill Triangle 5.

Fasten off and weave in ends.

## Section 1 Measurements

Metropolis: 10.5 x 6cm

Scrumptious: 14 x 7.5cm

## SECTION 2

### Fill Triangle 3

In this section, ends of RS rows are joined to ch-3 sps worked in Row 5 of Border Section 1. Only one short side of Row 5 is worked onto (see Schematic 8c: Part 2 Section 2).

With Yarn J, ss in first dc of last row of Section 1 (Row 5 of Border Section) to join.

**Row 1 (RS)** (Beg tr, 2tr) in same st as ss, 1dc in each of next two ch-3 sps of last row of Section 1, turn. [3 tr, 2 dc]

**Row 2 (WS)** Sk 2 dc, 2dc in next st, 1dc, 2dc in last st, turn. [5 dc]

**Row 3 (RS)** (Beg tr, ch2, 1tr) in first dc, (ch2, sk 1 st, pc) twice, 1dc in each of next two ch-3 sps of last row of Section 1, turn. [2 pc, 2 tr, 2 dc, 3 ch-2 sps]

**Row 4 (WS)** Sk 1 dc, (1dc in next st, 2dc in ch-2 sp) 3 times, 1dc in last tr, turn. [10 dc]

**Row 5 (RS)** (Beg dtr, ch2, 3tr-cl) in first dc, (ch2, sk 2 sts, 3tr-cl) 3 times, ch2, 1tr in same st as prev st, 1dc in each of next two ch-3 sps of last row of Section 1, turn.  
[4 3tr-cl, 1 dtr, 1 tr, 2 dc, 5 ch-2 sps]

**Row 6 (WS)** Sk 2 dc, 1dc in tr, (2dc in next ch-2 sp, 3dc in next ch-2 sp) twice, 2dc in next ch-2 sp, 1dc in last st. [14 dc]

Fasten off and weave in ends.

### Fill Triangle 4

In this section, ends of WS rows are joined to ch-3 sps worked in Row 5 of Section 1: Border.

Work onto other short side of Row 5 only (see Schematic 8c: Part 2 Section 2).

With Yarn J, ss in final dc of last row of Section 1 (Row 5 of Border) to join.

**Row 1 (RS)** (Beg tr, 2tr) in same st as ss, turn. [3 tr]

**Row 2 (WS)** 2dc in first tr, 1dc, 2dc in next st, 1dc in each of next two ch-3 sps of last row of Section 1, turn. [7 dc]

**Row 3 (RS)** Sk 2 dc, (pc, ch2, sk 1 st) twice, (1tr, ch2, 1tr) in last st, turn. [2 pc, 2 tr, 3 ch-2 sps]

**Row 4 (WS)** (1dc, 2dc in next ch-2 sp) 3 times, 1dc in last pc, 1dc in each of next two ch-3 sps of last row of Section 1, turn. [12 dc]

**Row 5 (RS)** Sk 2 dc, (1tr, ch2, 3tr-cl) in next st, (ch2, sk 2 sts, 3tr-cl) 3 times, ch2, 1dtr in same st as prev st, turn. [4 3tr-cl, 1 dtr, 1 tr, 5 ch-2 sps]

**Row 6 (WS)** 1dc in first st, (2dc in next ch-2 sp, 3dc in next ch-2 sp) twice, 2dc in next ch-2 sp, 1dc in last tr, 1dc in each of next two ch-3 sps of last row of Section 1. [16 dc]

Fasten off and weave in ends.

### Fill Triangle 5

In this section, ends of WS and RS rows are joined to ch-sps worked in Row 5 of Section 1: Border. Work onto remaining long side of Row 5 only (see Schematic 8c: Part 2 Section 2).

With Yarn J, ss in 14<sup>th</sup> (marked) dc of last row of Section 1 (Row 5 of Border section) to join.

**Row 1 (RS)** (Beg tr, 4tr) in same st as ss, 1dc in each of next two ch-3 sps of last row of

Section 1, turn. [5 tr, 2 dc]

**Row 2 (WS)** Sk 2 dc, 2dc in first tr, 1dc, 3dc in next tr, 1dc, 2dc in next tr, 1dc in each of next two ch-3 sps of last row of Section 1, turn. [11 dc]

**Row 3 (RS)** Sk 2 dc, (pc, ch2, sk 1 st) twice, (1tr, ch3, 1tr) in cnr-st, (ch2, sk 1 st, pc) twice, 1dc in each of next two ch-3 sps of last row of Section 1, turn.  
[4 pc, 2 tr, 4 ch-2 sps, 2 dc, 1 ch-3 sp]

**Row 4 (WS)** Sk 2 dc, (1dc in next st, 2dc in next ch-sp) 3 times, 3dc in same sp as prev dc, (1dc in next st, 2dc in next ch-2 sp) twice, 1dc in pc, 1dc in each of next two ch-3 sps of last row of Section 1, turn. [21 dc]

**Row 5 (RS)** Sk 2 dc, (1tr, ch2, 3tr-cl) in next st, (ch2, sk 2 sts, 3tr-cl) 3 times, ch3, 3tr-cl in same st as prev st, (ch2, sk 2 sts, 3tr-cl) 3 times, ch2, 1tr in same st as prev st, 1dc in each of next two ch-3 sps of last row of Section 1, turn. [8 3tr-cl, 2 tr, 2 dc, 8 ch-2 sps, 1 ch-3 sp]

**Row 6 (WS)** Sk 2 dc, 1dc in next tr, (2dc in next ch-2 sp, 3dc in next ch-2 sp) twice, 5dc in next ch-3 sp, (2dc in next ch-2 sp, 3dc in next ch-2 sp) twice, 1dc in last tr, 1dc in each of next two ch-3 sps of last row of Section 1. [29 dc]

Fasten off and weave in ends.

### Border Section

Work rows of Border Section across long side of Fill Triangle 3, both short sides of Fill Triangle 5 and long side of Fill Triangle 4 in this order as follows:

**Row 1 (RS)** Join Yarn J with ss in last st of Fill Triangle 3, 2dc in same st, work 14dc evenly across long side of Fill Triangle 3, 3dc in sixth ch-3 sp of last row of Section 1 (*this ch-3 sp already contains a st*), 1dc in next ch-3 sp of last row of Section 1, 3dc in next ch-3 sp of last row of Section 1 (*this ch-3 sp already contains a st*), work 14dc evenly across first short side of Fill Triangle 5 (placing final dc in st just before cnr dc), 3dc in cnr dc, work 14dc evenly across second short side of Fill Triangle 5, 3dc in ch-3 sp of last row of Section 1 (*this ch-3 sp already contains a st*), 1dc in next ch-3 sp of last row of Section 1, 3dc in next ch-3 sp of last row of Section 1 (*this ch-3 sp already contains a st*), work 14dc evenly across long side of Fill Triangle 4 to last st, 2dc in last st. [77 dc]

Fasten off Yarn J.

**Row 2 (WS)** Join Yarn B with ss in last st of prev row, 2dc in same st, 37dc, 3dc in cnr st (*second dc forms cnr*), 37dc, 2dc in last st, turn. [81 dc]

**Row 3 (RS)** (Beg dtr, ch2, 1tr) in first st, (ch1, sk 1 st, 1tr) 20 times, ch3 (*ch-3 sp forms cnr*), 1tr in same st as prev tr, (ch1, sk 1 st, 1tr) 20 times, ch2, 1dtr in same st as prev tr, turn.  
[2 dtr, 42 tr, 40 ch-1 sps, 2 ch-2 sps, 1 ch-3 sp]

*Note: dtr sts of Row 4 form tiny 'bobbles' on RS of work.*

**Row 4 (WS)** 1dc in dtr, (1dtr, 1dc) in ch-2 sp, (1dtr, 1dc) 20 times over next 40 sts/sps, 1dtr in next tr, (1dc, 1dtr) twice in next ch-3 sp, 1dc in same ch-3 sp, 1dtr in next tr, (1dc, 1dtr) 20 times over next 40 sts/sps, (1dc, 1dtr) in next ch-2 sp, 1dc in last st, turn. [46 dtr, 47 dc]

**Row 5 (RS)** (Beg tr, ch2, 1dc) in first st, (ch3, 1dc in next dc) 23 times, ch3, 1dc in same st as prev dc, (ch3, 1dc in next dc) 23 times, ch2, 1tr in same st as prev dc, turn.  
[2 tr, 48 dc, 47 ch-3 sps, 2 ch-2 sps]

**Row 6 (WS)** 1dc in first st, 2dc in each of next 12 ch-sps, 1dc in next ch-sp, 2dc in each of

next 11 ch-sps, 5dc in next ch-sp (*pm in third dc to mark cnr st*), 2dc in each of next 11 ch-sps, 1dc in next ch-sp, 2dc in each of next 12 ch-sps, 1dc in last st. [101 dc]  
Fasten off and weave in ends.

### Section 2 Measurements

Metropolis: 26 x 14cm

Scrumptious: 34 x 17cm

### SECTION 3

With Yarn K and WS facing, ss in 14th dc of last row of Section 2 (Row 6 of Border Section to join).

#### Base Rectangle

*Note: bobbles in this section are worked on WS and will pop through to RS.*

**Row 1 (WS)** 1dc in same st as ss, 1dc in each of next 24 sts, turn, *leaving rem sts unworked.* [25 dc]

**Row 2 (RS)** (Beg tr, 1tr) in first st, \*sk 2 sts, (1tr, ch1, 1tr) in next st; rep from \* 6 more times, sk 2 sts, 2tr in last st, turn. [18 tr, 7 ch-1 sps]

Work bobble of Row 3 in Yarn I, and dc in Yarn K, changing colour in last yoh of prev st. Strand unused yarn at WS of work to **conceal Yarn K only** when working bobble in Yarn I.  
*Note: as bobble is worked on WS, Yarn I tails are kept facing you.*

**Row 3 (WS)** Cont with Yarn K, 1dc in each of next 12 sts/sps, join Yarn I in last yoh of prev st, with Yarn I, bobble in next ch-1 sp, change to Yarn K, 1dc in each of next 12 sts/sps, turn. [1 bobble, 24 dc]  
Fasten off Yarn I.

**Row 4 (RS)** Rep Row 2.

Cont to work bobbles of Row 5 in Yarn I, and dc in Yarn K, strand unused yarn at WS of work to **conceal unused yarns bet first and last bobbles worked only.**

*Note: as bobbles are worked on WS, Yarn I tails are kept facing you.*

**Row 5 (WS)** Cont with Yarn K, 1dc in each of next 9 sts/sps, join Yarn I in last yoh of prev st, with Yarn I, bobble in next ch-1 sp, change back to Yarn K, 1dc in each of next 5 sts/sps, change to Yarn I, bobble in next ch-1 sp, change to Yarn K, 1dc in each of next 9 sts/sps, turn. [2 bobbles, 23 dc]  
Fasten off Yarn I.

**Row 6 (RS)** Rep Row 2.

**Row 7 (WS)** Rep Row 3, fasten off Yarn I.

**Row 8** With Yarn K, 1dc in each st to end. [25 dc]  
Fasten off and weave in ends.

#### Fill Triangle 6

Join Yarn L with ss in second dc of last row of Section 2 (Row 5 of Section 2: Border Section).

**Row 1 (WS)** 1dc in same st as ss, 1dc in each of next 9 sts, dc3tog over next 2 dc and side of first dc from Base Rectangle, work 10dc evenly across row ends of Base Rectangle,

placing final dc in side of last st of Row 8 of Base Rectangle, turn. [1 dc3tog, 20 dc]

**Row 2 (RS)** Beg tr3tog over first 3 dc, (ch1, sk 1 st, 1tr) twice, ch1, sk 1 st, tr5tog, (ch1, sk 1 st, 1tr) twice, ch1, sk 1 st, tr3tog, turn. [1 tr5tog, 2 tr3tog, 4 tr, 6 ch-1 sps]

**Row 3 (WS)** Beg tr3tog across first 3 sts/sps, ch1, sk 1 ch-sp, tr5tog over next 5 sts/sps, ch1, sk 1 ch-sp, tr3tog over next 1 tr, ch-sp and tr3tog, turn. [1 tr5tog, 2 tr3tog, 2 ch-1 sps]

**Row 4 (RS)** Dc5tog over all 5 sts/sps of prev row. [1 dc5tog]

Fasten off and weave in ends.

### Fill Triangle 7

Join Yarn L with ss in side of first st of Row 8 on Base Rectangle.

**Row 1 (WS)** 10dc evenly across row ends of Base Rectangle as before omitting side of dc of first row of Base Rectangle, dc3tog over side of next dc and 2 dc from last row of Section 2, 10dc, leaving cnr dc unworked, turn. [1 dc3tog, 20 dc]

**Rows 2-4** Work as for Fill Triangle 6.

Fasten off and weave in ends.

### Fill Triangle 8

Join Yarn B with ss in first st of Row 8 of Base Rectangle.

**Row 1 (RS)** 1dc in same st as ss, 24dc, turn. [25 dc]

Alt Yarn B and Yarn L in Rows 2-7: after joining second colour, strand or conceal unused colour in same way as prev.

**Row 2 (WS)** Cont with Yarn B, beg tr3tog, 6tr, tr3tog, join Yarn L in last yoh of prev st, cont with Yarn L, 4tr in next st, change to Yarn B, cont to work tr3tog, 6tr, tr3tog, turn. [4 tr3tog, 16 tr]

**Row 3 (RS)** Beg tr3tog, 2tr, tr3tog, change to Yarn L and cont to work 3tr in next st, 2tr, 3tr in next st, change to Yarn B and cont to work tr3tog, 2tr, tr3tog, turn. [4 tr3tog, 12 tr]

**Row 4 (WS)** Beg tr3tog, 3tr in next st, change to Yarn L and cont to work tr2tog, 4tr, tr2tog, change to Yarn B and cont to work 3tr in next st, tr3tog, turn. [2 tr3tog, 2 tr2tog, 10 tr]

**Row 5 (RS)** Beg tr3tog, 2tr in next st, change to Yarn L, tr2tog, 2tr, tr2tog, change to Yarn B, 2tr in next st, tr3tog, turn. [2 tr3tog, 2 tr2tog, 6 tr]

**Row 6 (WS)** Beg tr2tog, 1tr in next st, change to Yarn L, (tr2tog) twice, change to Yarn B, 1tr in next st, tr2tog, turn. [4 tr2tog, 2 tr]

**Row 7 (RS)** Beg tr2tog, change to Yarn L, tr2tog, change to Yarn B, tr2tog, turn. [3 tr2tog]  
Fasten off Yarn L.

**Row 8 (WS)** Beg tr3tog, *place st marker in this st to mark beg/end points for next section.*  
[1 tr3tog]

Fasten off and weave in ends.

Rep Base Rectangle and Fill Triangles 6-8 on alt side of Section 2 piece, beg with Base Rectangle WS facing and joining in 14th dc of last row of Section 2 (count unworked cnr dc as first st). Start Fill Triangle 6 in st after unworked cnr dc. Start Fill Triangle 7 *in side* of first st of Row 8 of Base Rectangle. Start Fill Triangle 8 in first st of Row 8 of Base Rectangle.

### Section 3 Measurements

Metropolis: 26 x 14cm

Scrumptious: 34 x 17cm

## SECTION 4

### Fill Triangle 9

Join Yarn B with ss in first dc from last row of Section 2 (Row 5 of Section 2: Border Section), indicated by green dot on Schematic 8e: Part 2 Section 4.

**Row 1 (RS)** 1dc in same st as ss, 36dc evenly across row ends, placing last dc in final tr3tog of Fill Triangle 8, turn. [37 dc]

**Row 2 (WS)** Beg tr3tog, (ch1, sk 1 st, 1tr) to end, turn. [1 tr3tog, 17 tr, 17 ch-1 sps]

**Row 3 (RS)** Beg tr, 1tr in each st/sp across to last 3 sts/sps, tr3tog over last 3 sts, turn. [1 tr3tog, 32 tr]

**Row 4 (WS)** Rep Row 2. [1 tr3tog, 15 tr, 15 ch-1 sps]

**Row 5 (RS)** Beg tr, (ch1, sk 1 sp, pc in next tr, ch1, sk 1 sp, 1tr in next tr) to last 2 tr, ch1, pc in next tr, ch1, sk 1 sp, tr3tog over 1 tr, 1 sp and beg tr3tog, turn. [1 tr3tog, 7 pc, 7 tr, 14 ch-1 sps]

**Row 6 (WS)** Beg tr2tog over tr3tog and ch-1 sp, sk 1 pc and 1 sp, 4tr in each tr across to last tr, 2tr in last tr, turn. [1 tr2tog, 26 tr]

**Row 7 (RS)** Beg tr2tog over first 2 tr, (ch3, tr4tog) to last tr2tog, 1tr in tr2tog, turn. [6 tr4tog, 1 tr2tog, 1 tr, 6 ch-3 sps]

**Row 8 (WS)** Sk first tr and tr4tog, ch1, 2dc in first ch-3 sp, (1dc in tr4tog, 3dc in ch-3 sp) to tr2tog, 1dc in tr2tog, turn. [23 dc, 1 ch]

**Row 9 (RS)** Rep Row 3. [1 tr3tog, 20 tr]

Fasten off and weave in ends.

**Row 10 (WS)** Join Yarn M with ss in last st of prev row, rep Row 2. [1 tr3tog, 9 tr, 9 ch-1 sps]

**Row 11 (RS)** Rep Row 5. [1 tr3tog, 4 pc, 4 tr, 8 ch-1 sps]

Fasten off and weave in ends.

**Row 12 (WS)** Join Yarn N with ss in last st of prev row, rep Row 6. [1 tr2tog, 14 tr]

**Row 13 (RS)** Rep Row 7. [3 tr4tog, 1 tr2tog, 1 tr, 3 ch-3 sps]

Fasten off and weave in ends.

**Row 14 (WS)** Join Yarn B with ss in last st of prev row, rep Row 8. [11 dc, 1 ch]

**Row 15 (RS)** Rep Row 3. [1 tr3tog, 8 tr]

Fasten off and weave in ends.

**Row 16 (WS)** Join Yarn M with ss in last st of prev row, rep Row 2. [1 tr3tog, 3 tr, 3 ch-1 sps]

**Row 17 (RS)** Beg tr, ch1, pc in next tr, ch1, sk 1 sp, tr3tog over 1 tr, 1 sp and beg tr3tog, turn. [1 tr3tog, 1 pc, 1 tr, 2 ch-1 sps]

Fasten off and weave in ends.

**Row 18 (WS)** Join Yarn N with ss in last st of prev row, beg tr2tog over tr3tog and ch-1 sp, sk pc and ch-1 sp, 2tr in last tr, turn. [1 tr2tog, 2 tr]

**Row 19 (RS)** Beg tr3tog. [1 tr3tog]

Fasten off and weave in ends.



### Fill Triangle 10

Join Yarn B with ss in final tr3tog of Fill Triangle 8, indicated by orange dot on Schematic 8e: Part 2 Section 4.

*Note: in this section to end, some beg tr2tog/tr3tog are worked over sts and sps; 1 ch-sp counts as 1 st.*

**Row 1 (RS)** Beg in same st as ss, 37dc evenly across row ends, placing last dc in unworked dc from last row of Section 2, turn. [37 dc]

**Row 2 (WS)** Beg tr, (ch1, sk 1 st, 1tr) to last 4 sts, ch1, sk 1 st, tr3tog, turn.  
[1 tr3tog, 17 tr, 17 ch-1 sps]

**Row 3 (RS)** Beg tr3tog, 1tr in each st/sp to end, turn.  
[1 tr3tog, 32 tr]

**Row 4 (WS)** Rep Row 2. [1 tr3tog, 15 tr, 15 ch-1 sps]

**Row 5 (RS)** Beg tr3tog, (ch1, pc in next tr, ch1, 1tr in next tr) to end, turn.  
[1 tr3tog, 7 pc, 7 tr, 14 ch-1 sps]

**Row 6 (WS)** (Beg tr, 1tr) in first st, sk next ch-1 sp, pc and ch-1 sp, 4tr in each tr to last tr, sk ch-1 sp and pc, tr2tog over final ch-sp and tr3tog, turn. [1 tr2tog, 26 tr]

**Row 7 (RS)** Beg tr, (tr4tog, ch3) to last 2 tr, tr2tog, turn. [6 tr4tog, 1 tr2tog, 1 tr, 6 ch-3 sps]

**Row 8 (WS)** 1dc in first st, (3dc in ch-3 sp, 1dc in tr4tog) to last ch-3 sp, 2dc in last ch-3 sp, turn. [23 dc]

**Row 9 (RS)** Rep Row 3. [1 tr3tog, 20 tr]  
Fasten off and weave in ends.

**Row 10 (WS)** Join Yarn M with ss in last st of prev row, rep Row 2. [1 tr3tog, 9 tr, 9 ch-1 sps]

**Row 11 (RS)** Rep Row 5. [1 tr3tog, 4 pc, 4 tr, 8 ch-1 sps]  
Fasten off and weave in ends.

**Row 12 (WS)** Join Yarn N with ss in last st of prev row, rep Row 6. [1 tr2tog, 14 tr]

**Row 13 (RS)** Rep Row 7. [3 tr4tog, 1 tr2tog, 1 tr, 3 ch-3 sps]  
Fasten off and weave in ends.

**Row 14 (WS)** Join Yarn B with ss in last st of prev row, rep Row 8. [11 dc]

**Row 15 (RS)** Rep Row 3. [1 tr3tog, 8 tr]  
Fasten off and weave in ends.

**Row 16 (WS)** Join Yarn M with ss in last st of prev row, rep Row 2. [1 tr3tog, 3 tr, 3 ch-1 sps]

**Row 17 (RS)** Beg tr3tog, ch1, pc in next tr, ch1, 1tr in last tr, turn. [1 tr3tog, 1 pc, 1 tr, 2 ch-1 sps]  
Fasten off and weave in ends.

**Row 18 (WS)** Join Yarn N with ss in last st of prev row, (beg tr, 1tr) in first st, sk next ch-1 sp and pc, tr2tog over ch-1 sp and tr3tog, turn. [1 tr2tog, 2 tr]

**Row 19 (RS)** Beg tr3tog. [1 tr3tog]  
Fasten off and weave in ends.

### Fill Triangle 11

Join Yarn B in final tr3tog of Fill Triangle 8, indicated by purple dot on Schematic 8e: Part 2 Section 4.

**Row 1 (RS)** Beg in same st as ss, 73dc evenly across row ends (37<sup>th</sup> dc falls in marked st of last row of Section 2), placing last dc in opposing last tr3tog of Fill Triangle 8, turn. [73 dc]

**Row 2 (WS)** Beg tr3tog, (ch1, sk 1 st, 1tr) to last 4 sts, ch1, sk 1 st, tr3tog, turn.  
[2 tr3tog, 33 tr, 34 ch-1 sps]

**Row 3 (RS)** Beg tr3tog, 1tr in each st/sp to last 3 sts/sps, tr3tog, turn. [2 tr3tog, 63 tr]

**Row 4 (WS)** Rep Row 2. [2 tr3tog, 29 tr, 30 ch-1 sps]

**Row 5 (RS)** Beg tr3tog over tr3tog, ch-1 sp and 1 tr, (ch1, pc in next tr, ch1, 1tr in next tr) to last 2 tr, ch1, pc in next tr, ch1, sk 1 sp, tr3tog, turn. [2 tr3tog, 14 pc, 13 tr, 28 ch-1 sps]

**Row 6 (WS)** Beg tr2tog over tr3tog and ch-1 sp, 4tr in each tr across, tr2tog over final ch-sp and tr3tog, turn. [2 tr2tog, 52 tr]

**Row 7 (RS)** Beg tr in tr2tog, (tr4tog, ch3) to last 4 tr, tr4tog, 1tr in tr2tog, turn.  
[13 tr4tog, 2 tr, 12 ch-3 sps]

**Row 8 (WS)** Sk first tr and tr4tog, ch1, 2dc in first ch-3 sp, (1dc in tr4tog, 3dc in ch-3 sp) to last 2 tr4tog, 1dc in tr4tog, 2dc in ch-3 sp, *leaving last tr4tog and tr unworked*, turn.  
[45 dc, 1 ch]

**Row 9 (RS)** Rep Row 3. [2 tr3tog, 39 tr]  
Fasten off and weave in ends.

**Row 10 (WS)** Join Yarn M with ss in last st of prev row, rep Row 2. [2 tr3tog, 17 tr, 18 ch-1 sps]

**Row 11 (RS)** Rep Row 5. [2 tr3tog, 8 pc, 7 tr, 16 ch-1 sps]  
Fasten off and weave in ends.

**Row 12 (WS)** Join Yarn N with ss in last st of prev row, rep Row 6. [2 tr2tog, 28 tr]

**Row 13 (RS)** Rep Row 7. [7 tr4tog, 2 tr, 6 ch-3 sps]  
Fasten off and weave in ends.

**Row 14 (WS)** Join Yarn B with ss in last ch-sp of prev row, 2dc in same ch-sp as ss, (1dc in tr4tog, 3dc in ch-3 sp) to last tr4tog, 1dc in tr4tog, 2dc in ch-3 sp, *leaving last tr4tog and tr unworked*, turn. [21 dc]

**Row 15 (RS)** Rep Row 3. [2 tr3tog, 15 tr]  
Fasten off and weave in ends.

**Row 16 (WS)** Join Yarn M with ss in last st of prev row, rep Row 2. [2 tr3tog, 5 tr, 6 ch-1 sps]

**Row 17 (RS)** Beg tr3tog over tr3tog, ch-1 sp and 1 tr, ch1, pc in next tr, ch1, 1tr in next tr, ch1, pc in next tr, ch1, sk next ch-1 sp, tr3tog over next 1 tr, ch-1 sp and tr3tog, turn.  
[2 tr3tog, 2 pc, 1 tr, 4 ch-1 sps]  
Fasten off and weave in ends.

**Row 18 (WS)** Join Yarn N with ss in last st of prev row, beg tr2tog over tr3tog and ch-1 sp, 4tr in tr, sk ch- sp and 1 pc, tr2tog over ch-1 sp and tr3tog, turn. [2 tr2tog, 4 tr]

**Row 19 (RS)** Beg tr6tog. [1 tr6tog]  
Fasten off and weave in ends.

#### **Section 4 Measurements**

Metropolis: 54 x 28cm

Scrumptious: 68 x 34cm

#### **LEFT-HAND SIDE MOTIF**

Use yarn colours as indicated on full blanket schematics per respective colourway (Schematics 1-3). **Do not use the same colours as indicated in the repeated pattern sections or you may run out of those colours in following sections.**

Rep Sections 1-3 of Centre Motif.

Rep Section 4 of Centre Motif, *omitting Fill Triangle 9.*

### **Left-hand Side Motif Measurements**

Metropolis: 42 x 28cm

Scrumptious: 50 x 34cm

### **RIGHT-HAND SIDE MOTIF**

Use yarn colours as indicated on full blanket schematics per respective colourway (Schematics 1-3). **Do not use the same colours as indicated in the repeated pattern sections you may run out of those colours in following sections.**

Rep Sections 1-3 of Centre Motif.

Rep Section 4 of Centre Motif, *omitting Fill Triangle 10.*

### **Right-hand Side Motif Measurements**

Metropolis: 42 x 28cm

Scrumptious: 50 x 34cm

### **EDGING ROUND**

With RS facing, lay out all three motifs according to Schematic 9: Part 2 Edging Round + Join. With RS facing, join Yarn A with ss to Left-Hand Side Motif in first dc of Row 1 of Section 4: Triangle Fill 11, indicated by green dot on Schematic 9: Part 2 Edging Round + Join (*the starting point will be on opposite side of Schematic for left-handed crochet, working sts clockwise*).

*Note: when working first part of Edging Round in row ends, place st markers every 10 sts along to check that sts are evenly spaced. If crocheting left-handed, beg on opposite side.*

Work red path of Schematic 9: Part 2 Edging Round + Join as folls: 3dc in same st as ss (*mark second dc with st marker for beg of Chain Loop Row*), work 48dc evenly across row ends of first edge to tr6tog in cnr, \*3dc in tr6tog cnr (*pm in second dc just worked*), work 100dc evenly across row ends of next edge to last tr3tog of Fill Triangle 10 (before next cnr), dc2tog over tr3tog of Fill Triangle 10 (st before cnr) and tr3tog of Fill Triangle 9 (first st after cnr) (*pm in dc2tog just worked*), work 100dc evenly across next edge to tr6tog in cnr; rep from \* once more, 3dc in tr6tog cnr (*pm in second dc just worked*), work 48 dc evenly across next edge to last dc of Row 1 of Right-Hand Side Motif: Fill Triangle 11, 3dc in first row of Section 4 for cnr (*pm in second dc just worked*), work 38dc evenly down side edge of Right-Hand Side Motif: Section 3 to last st of next cnr (end of red path). **Do not** fasten off.

Place 10 st markers along unworked lower edge of Part 2 as indicated by purple dots on Schematic 9: Part 2 Edging Round + Join.

### Join Part 2 to Part 1

Cont to work blue path of Schematic 9: Part 2 Edging Round + Join to complete Edging Round and join Part 2 to Part 1 as you go as follows: work 2dc in cnr, PLT join in adjacent cnr dc of Part 1: Motif 10, 1dc in same cnr as prev 2 dc, PLT join, (1dc, PLT join) 35 times across Motif 10 edge, *ending at first st marker*, (1dc, PLT join) 37 times across each subsequent Part 1 motif (*always ending at next st marker*) to next cnr, 2dc in cnr, work 37dc evenly across remaining side edge of Left-Hand Side Motif: Section 3, ss in first dc to join, **do not** fasten off.

Parts 1 and 2 are now joined. Cont to work Chain Loop Row.

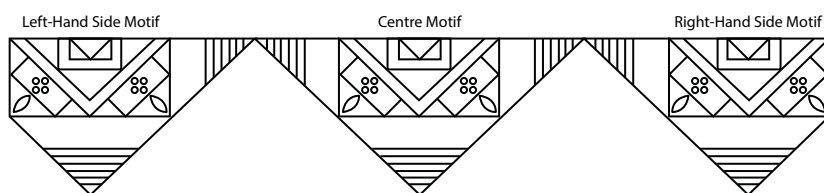
### CHAIN LOOP ROW

*Note: sm added in Edging Round mark peaks/valleys; work the first and last dc for each side in these marked sts. You can remove sm as you go and place sm in dc sts as you work each (ch-3 sp, sk 2 sts, 1dc) rep to help when joining Panel 1 and 2 later on.*

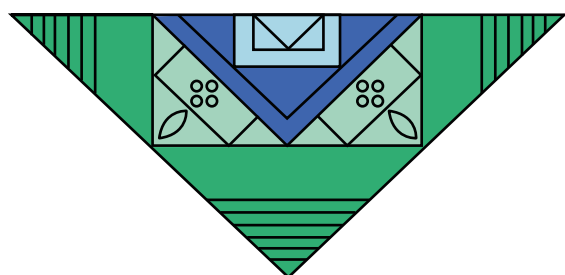
Ss in second dc of Edging Round (*marked with st marker*), (1dc, ch3, 1dc) in same st as ss, (ch3, sk 2 sts, 1dc) 170 times until cnr dc at orange dot on Schematic 9: Part 2 Edging Round + Join is reached, ch3, 1dc in same st, fasten off and weave in ends. Blue numbers on Schematic 9: Part 2 Edging Round + Join represent how many ch-3 sps there are on each respective portion of the row. [173 dc, 172 ch-sps]

Panel 1 is now complete.

### Schematic 7: Part 2 Layout Schematic



### Schematic 8a: Part 2 Centre Motif

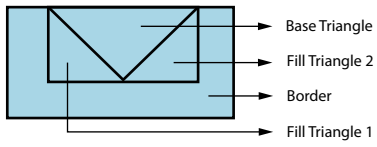


#### Key

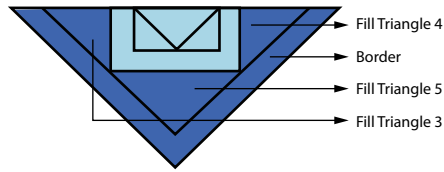
- Section 1
- Section 2
- Section 3
- Section 4



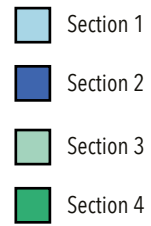
### Schematic 8b: Part 2 Section 1



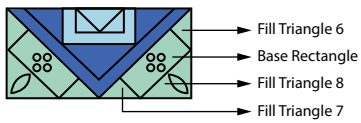
### Schematic 8c: Part 2 Section 2



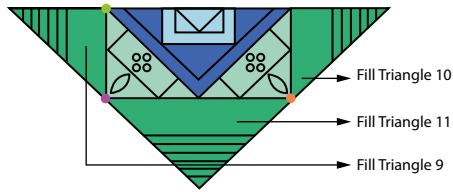
### Key



### Schematic 8d: Part 2 Section 3



### Schematic 8e: Part 2 Section 4



### Schematic 9: Part 2 Edging Round + Join

