

"The voice of the sea speaks to the soul."

This CAL was originally designed by Marinke Slump (aka Wink) from [www.acreativebeing.com](http://www.acreativebeing.com) and realised in her memory by the bloggers and designers who knew and worked with her.

# Scheepjes CAL 2016

## Last Dance on the Beach

### Tips & Tricks

Page 1

#### Materials

Scheepjeswol Merino Soft (50% Superwash Extra Fine Merino Wool, 25% Microfibre and 25% Acrylic, 50g/105m)

OR

Scheepjeswol Colour Crafter (100% Premium Acrylic, 100g/300m)

See Notes about yarns below

All hook sizes from 4mm – 6mm for Merino Soft  
All hook sizes from 3.4 mm to 5.5mm for Colour Crafter

See notes about Tension below  
Tapestry needle

#### Measurements

A completed blanket made in Merino Soft will measure approx. 130cm by 160cm if each square is 19cm square.

A completed blanket made in Colour Crafter will measure approx. 115cm by 150cm if each square is 18cm square.

#### Tension

A blocked and finished square in Merino Soft yarn measures 19cm square using a 4.5mm hook or size needed to obtain correct gauge.

A blocked and finished square in Colour Crafter yarn measures 18cm square using a 4mm hook or size needed to obtain correct gauge.

#### Notes

There will be a total of 14 weeks in the CAL. The first 12 weeks will include a pattern for one of twelve different squares, and then instructions will be given for joining them together and making the border in the final two weeks. You will need to make four squares of each pattern in the same colour for the first 12 weeks, making a total of 48 squares. For each square there will be the option to work in either Colour Crafter or Merino Soft yarn.

#### Construction

Each square will have a double crochet border around it of the same number of stitches. At the end of the CAL, there will be instructions for joining the squares together and adding a border to make a blanket.

#### Contrast Thread

On completion of each square, attach a small piece of contrast thread (a piece of scrap yarn in a contrasting colour, NOT from your kit yarn) through the middle stitch of each corner.

#### Blocking

It is important to use wet blocking (not spray blocking) for this project, especially when combining light and dark colours.

Gauge is very important in this project as different textured stitches can make the squares contract a little. In order to determine your hook size, please work a gauge swatch as per the pattern below.

You are aiming for each square to be the size stated above, but it is more important that all your squares throughout the CAL are an even size, than exact size stated above. Blocking will even out minor differences in size, but alter your hook size if the size of your squares varies considerably. Each square is worked with a border of the same number of dc stitches around the edge. Please keep in mind when you begin each square that it will be slightly larger when the border is added.

#### Important Information

- Make sure not to work the double crochet stitch borders too tight. A nice stretchy border will make joining the squares much easier to join.
- It is important to work the correct number of stitches for the edging round of each square. (26dc on each straight side and 3dc in each corner)

Begin with the following hook sizes : Merino Soft 4.5mm, Colour Crafter 4mm. However, you will find (because of the range of stitches) that on many squares you will have to go up or down up to 3 sizes to achieve the correct square dimensions.

## Scheepjes Bloggers

walked hand in hand with Marinke whilst designing this blanket.

Made possible by :

*Scheepjes*  
INSPIRATION IN EVERY BALL OF YARN

Pattern Copyright © [www.Scheepjeswol.com](http://www.Scheepjeswol.com)

This pattern is available for unlimited personal use. You may print a copy of the pattern or keep a digital copy for personal use only. Do not reproduce or sell this pattern (either digitally or in print). This document may not be posted online, either as a complete document or in part. You are allowed to sell items that are made using this pattern as long as the designer is credited. Please do not print copies to distribute with yarn sales as this is an infringement of copyright.

"The voice of the sea speaks to the soul."

This CAL was originally designed by Marinke Slump (aka Wink) from [www.acreativebeing.com](http://www.acreativebeing.com) and realised in her memory by the bloggers and designers who knew and worked with her.

# Scheepjes CAL 2016

## Last Dance on the Beach

### Tips & Tricks

Page 2

#### Colour Use for the Gauge Swatch

Dancing in the Sea : Merino Soft Turner (610) or Colour Crafter Urk (1034)

Dancing in the Rain : Merino Soft Malevich (600) or Colour Crafter Weert (1001)

Dancing under the Stars : Merino Soft Seurat (637) or Colour Crafter Hoorn (1067)

#### Gauge Swatche Pattern (UK terms)

Ch30.

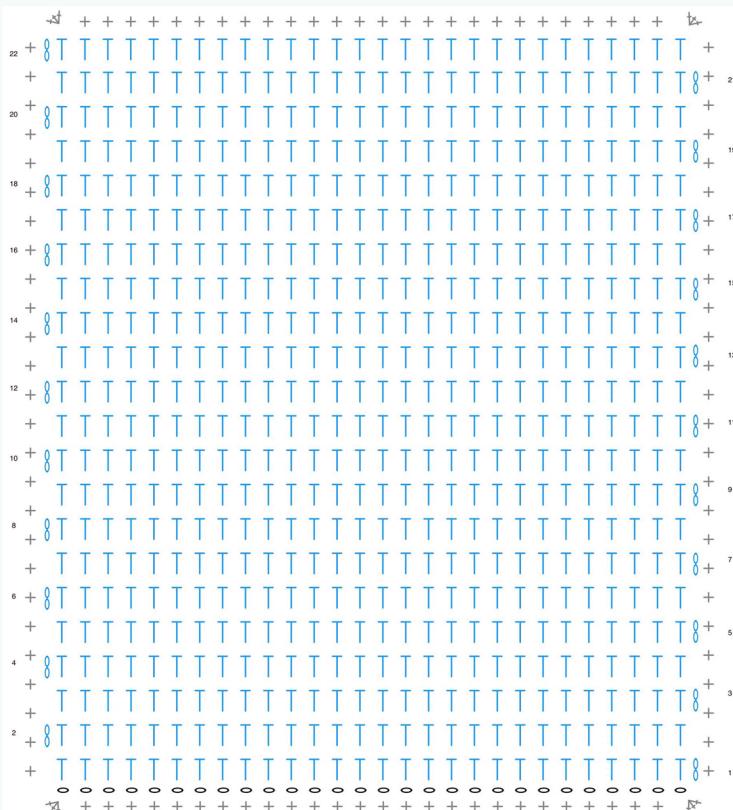
**Row 1 (RS)** Htr in third ch from hook and in each ch to end, turn. [28 htr]

**Rows 2-22** Ch2 (does not count as st), htr in each st to end, turn.

Edging

**Round 1 (RS)** Ch1 (does not count as st), work 26 dc evenly along each side of the square, with 3dc in each corner st, ss to first dc.

Fasten off and weave in ends.



- 0 chain
- + double crochet
- T half treble crochet
- slip stitch

## Scheepjes Bloggers

walked hand in hand with Marinke whilst designing this blanket.

Made possible by :

*Scheepjes*  
INSPIRATION IN EVERY BALL OF YARN

Pattern Copyright © [www.Scheepjeswol.com](http://www.Scheepjeswol.com)

This pattern is available for unlimited personal use. You may print a copy of the pattern or keep a digital copy for personal use only. Do not reproduce or sell this pattern (either digitally or in print). This document may not be posted online, either as a complete document or in part. You are allowed to sell items that are made using this pattern as long as the designer is credited. Please do not print copies to distribute with yarn sales as this is an infringement of copyright.